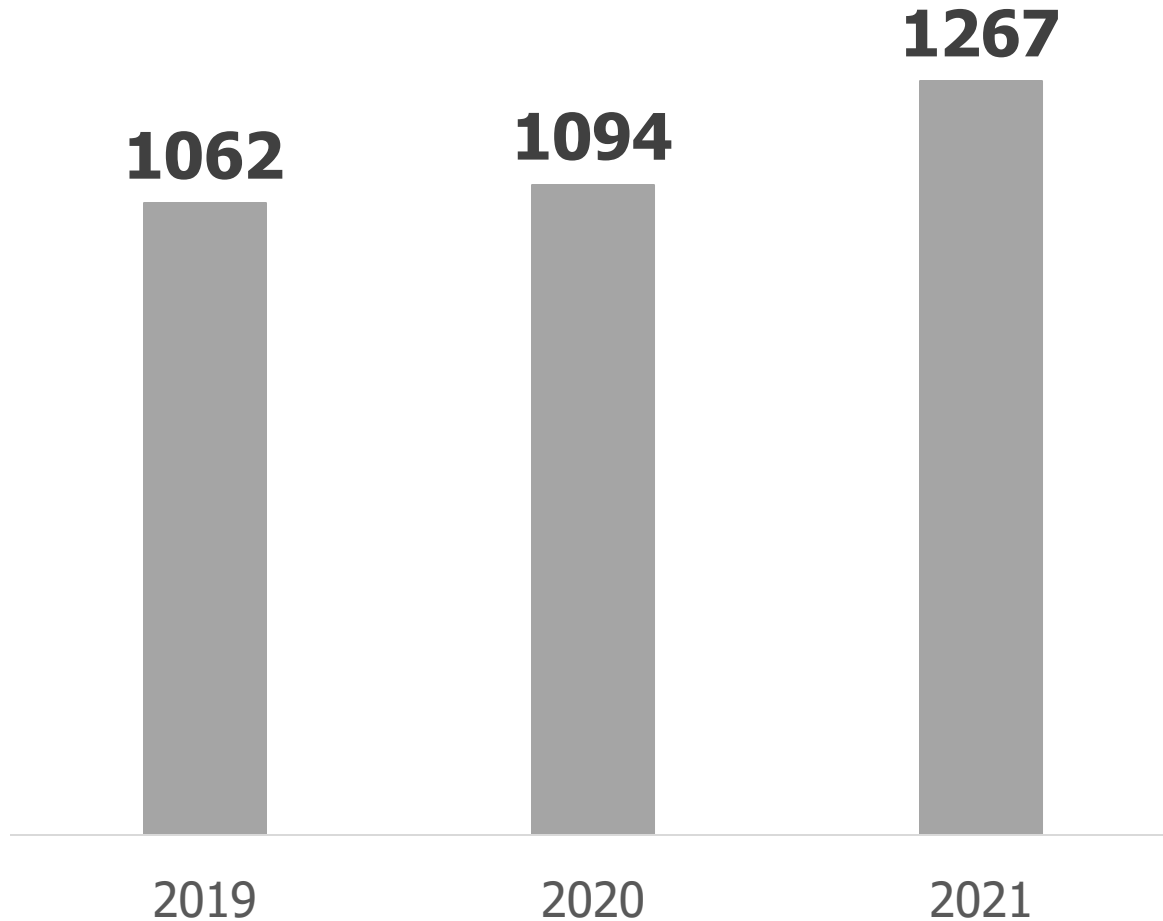




# Track Trespassing Task Force February 2022

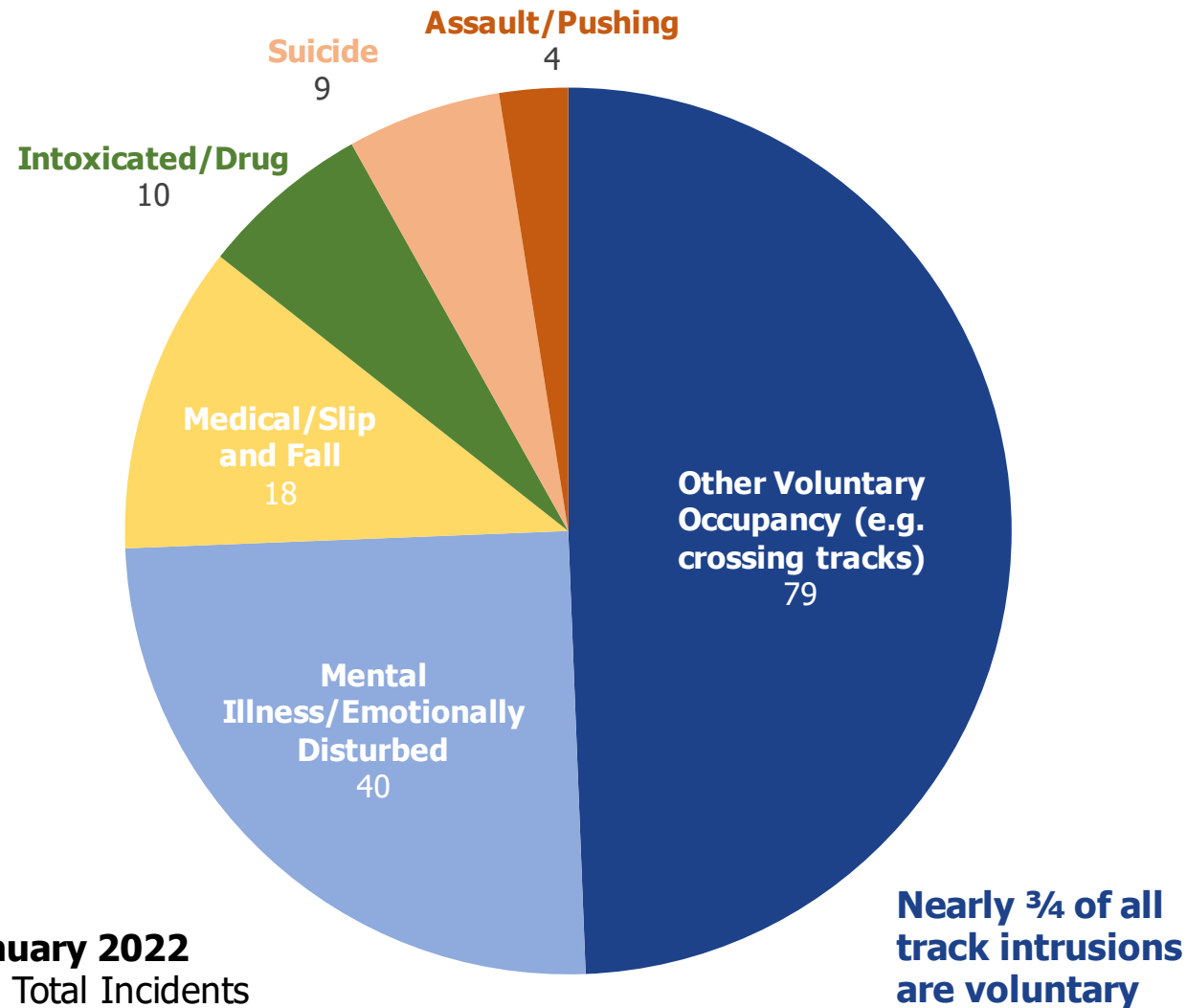
# 20% increase in reported track intrusions from 2019 to 2021

Annual Reported Track Intrusions



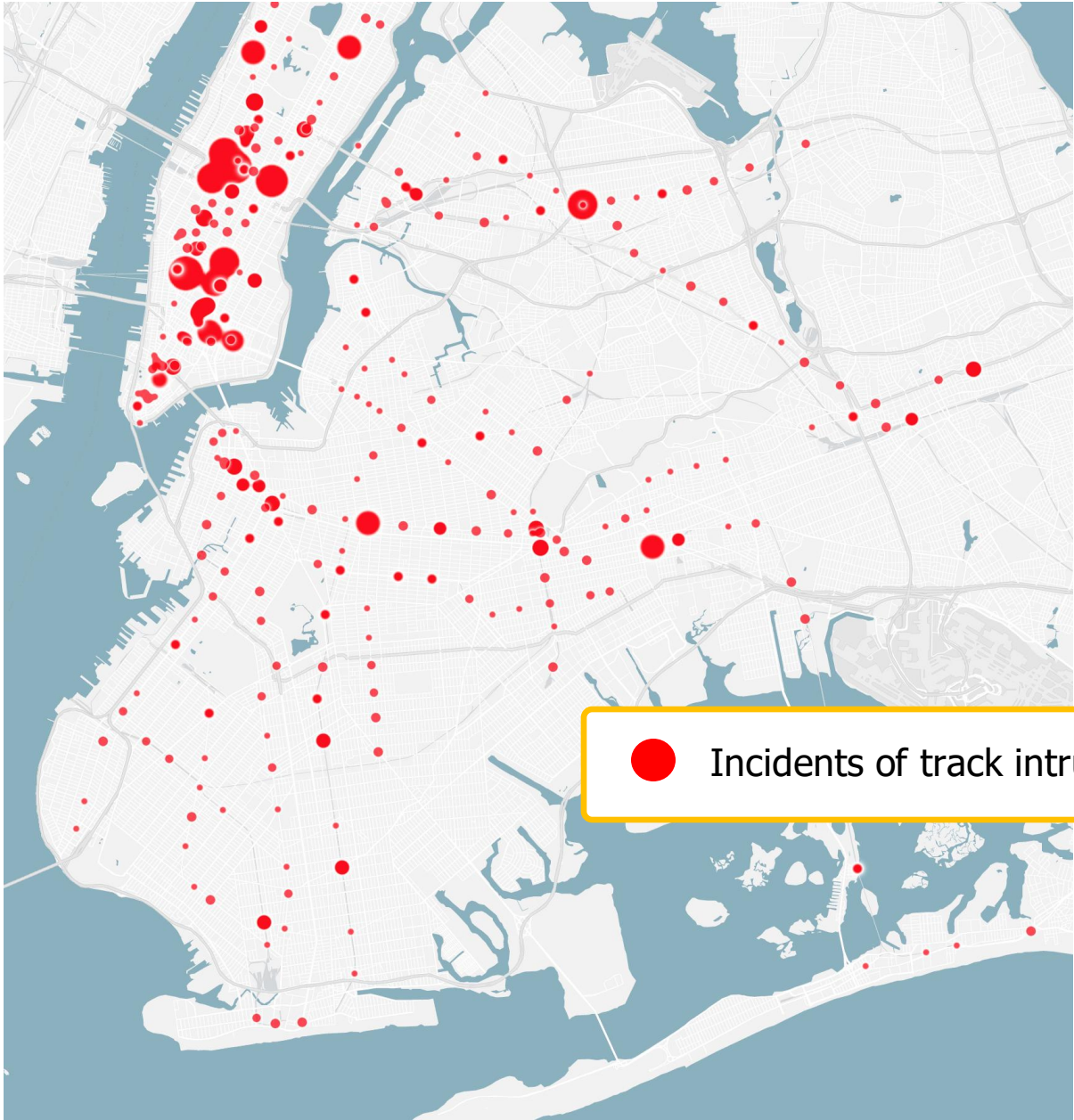
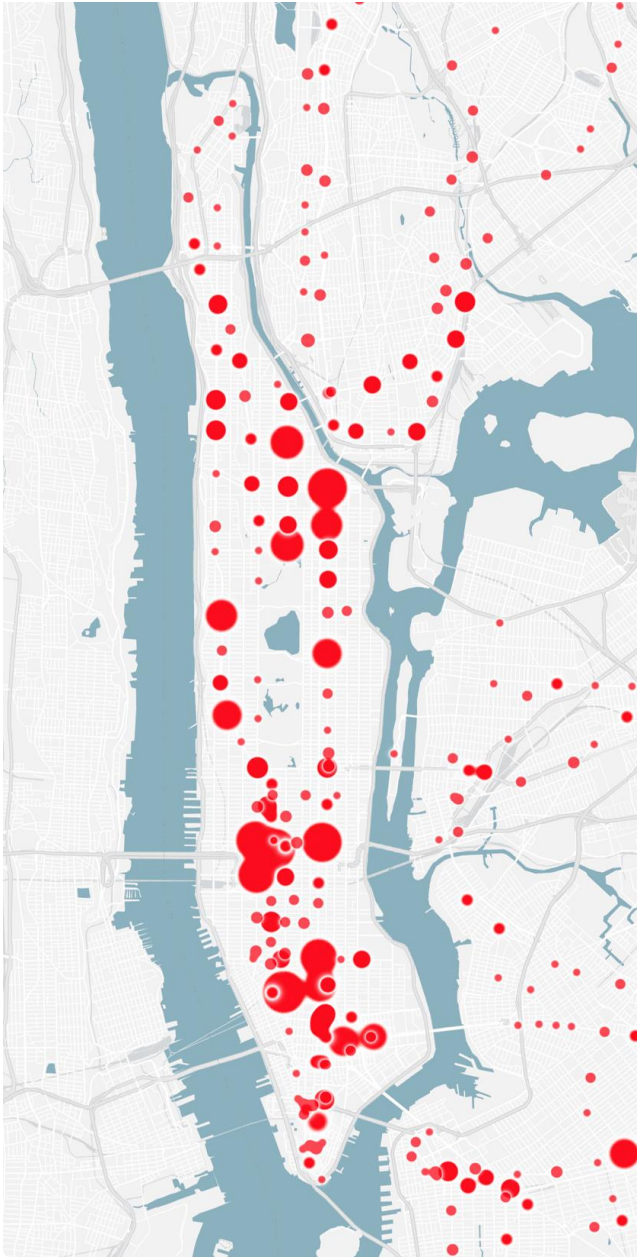
- Of 1,267 reported incidents in 2021, 200 (16%) resulted in collisions
- 68 of those collisions resulted in fatalities

# Better information going forward



- Starting in January 2022, **more detailed data** on the causes of track trespassing incidents is being collected.
- This **includes all incidents, not just those that result in a collision.**

# Track Intrusion Locations – 2021



● Incidents of track intrusion scaled by frequency

# Task Force Process



## **MTA Interagency Working Group**

- MTA C&D - Infrastructure
- NYC Transit – Safety & Security, Stations
- Long Island Rail Road - Safety
- Metro North Railroad - Security
- MTA HQ - Office of Safety & Security, Strategy & Customer Engagement



## **Analysis & Review**

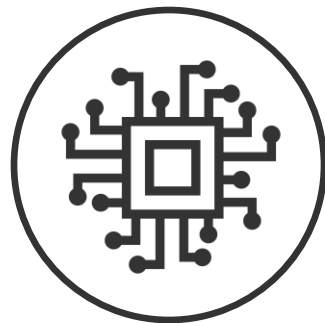
- Analyzed data on intrusions and collisions
- Established new tracking methodology with more fine-grained information about cause and impact
- Conducted survey of homelessness in the system
- Reviewed previous studies, including Platform Screen Doors feasibility study, Track Intrusion Detection System pilot

# Task Force Process



## Outreach

- Transit Agency Benchmarking Organizations:
  - Community of Metros (COMET)
  - International Suburb Rail Benchmarking Group (ISBeRG)
- Transit Innovation Partnership
- NYS Department of Health
- NYC Department of Health and Mental Hygiene
- Suicide Prevention Organizations:
  - NYU Department of Psychiatry
  - Columbia Department of Psychiatry
  - SAVE.org
  - American Foundation for Suicide Prevention



## Industry Survey & Technology Review

- Request for Information – Track Intrusion Detection Systems
- Transit Tech Lab Challenge
- Proof-of-concept for CCTV technologies

# Ongoing Efforts

- Messaging campaigns
- Safety announcements
- In-station Help Points
- Platform Edge Warning Strips
- Laser Intrusion Detection Systems



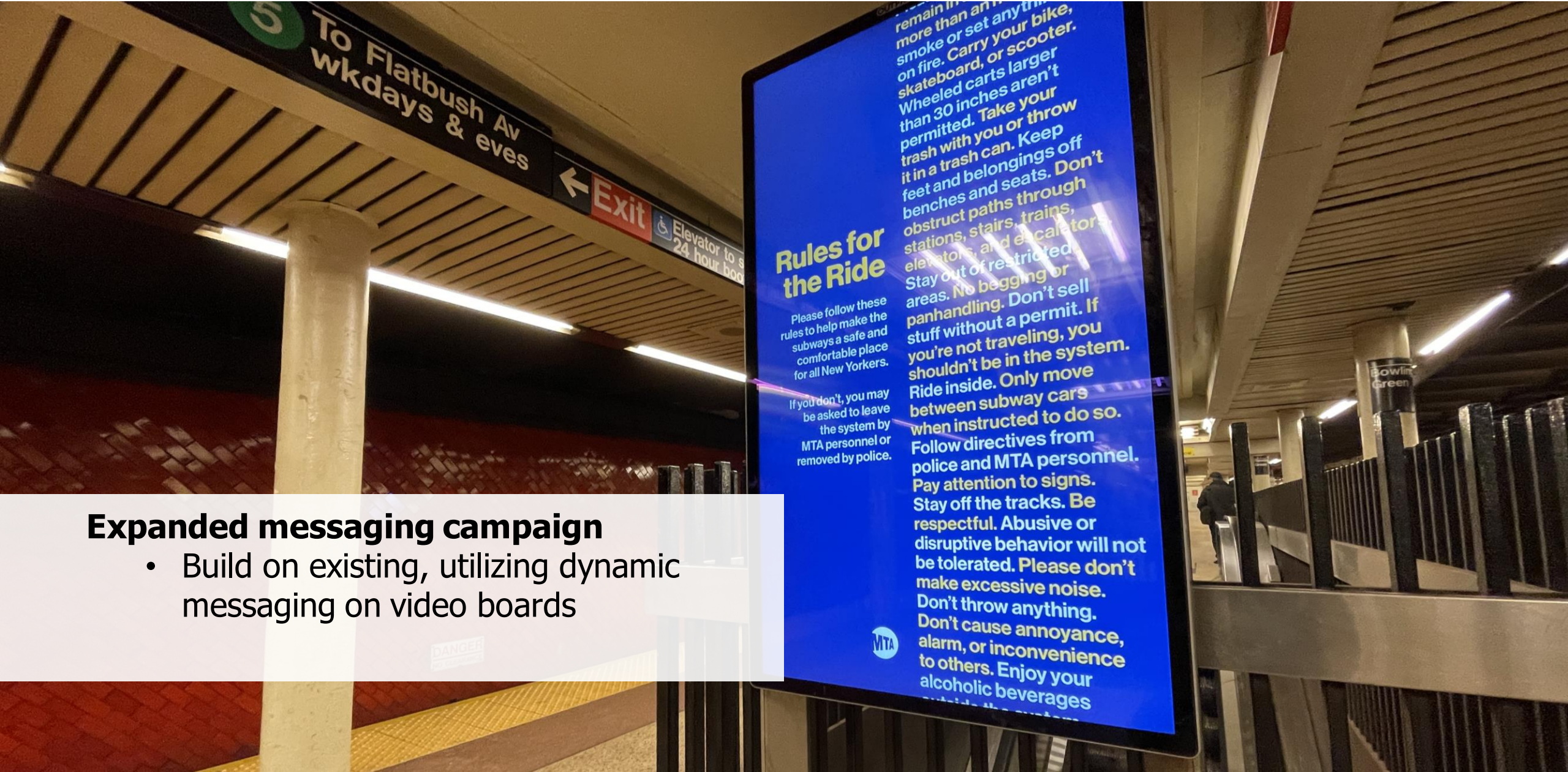
**Look out for yourself and others**

If you see someone behaving in a way that could be dangerous to themselves or others, let us know.

We'll call social service providers, mental health professionals, or police if necessary.

Use a Help Point  on platforms or intercom  on trains to reach an MTA employee.

# Expanded Messaging



## Rules for the Ride

Please follow these rules to help make the subways a safe and comfortable place for all New Yorkers.

If you don't, you may be asked to leave the system by MTA personnel or removed by police.

- remain in the subway more than an hour
- smoke or set anything on fire. Carry your bike, skateboard, or scooter.
- Wheeled carts larger than 30 inches aren't permitted. Take your trash with you or throw it in a trash can. Keep benches and seats. Don't obstruct paths through stations, stairs, trains, elevators, and escalators.
- Stay out of restricted areas. No begging or panhandling. Don't sell stuff without a permit. If you're not traveling, you shouldn't be in the system.
- Ride inside. Only move between subway cars when instructed to do so.
- Follow directives from police and MTA personnel.
- Pay attention to signs. Stay off the tracks. Be respectful. Abusive or disruptive behavior will not be tolerated. Please don't make excessive noise.
- Don't throw anything. Don't cause annoyance, alarm, or inconvenience to others. Enjoy your alcoholic beverages

MTA

## Expanded messaging campaign

- Build on existing, utilizing dynamic messaging on video boards



# Suicide Prevention Partnership

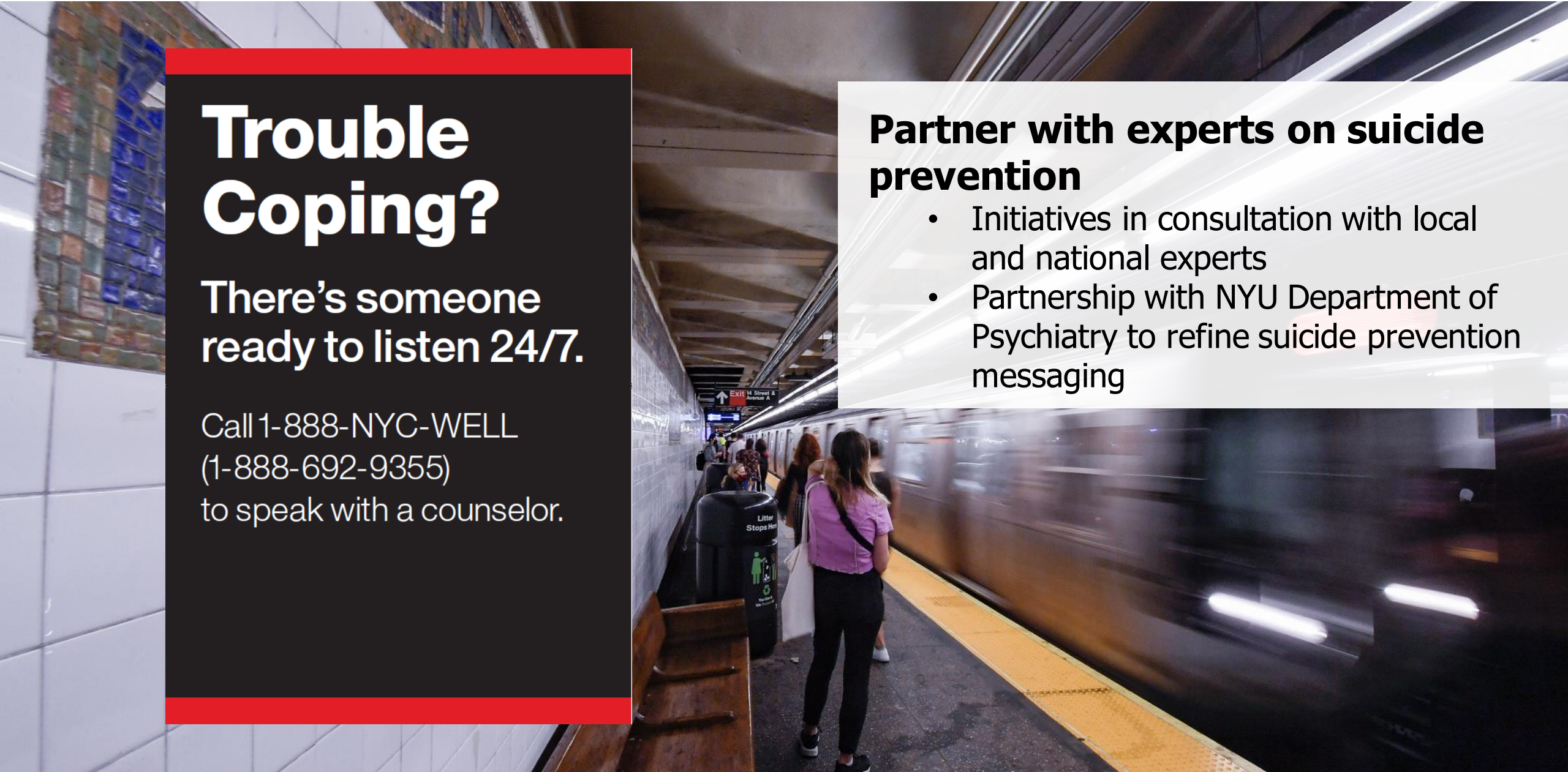
## Trouble Coping?

There's someone ready to listen 24/7.

Call 1-888-NYC-WELL  
(1-888-692-9355)  
to speak with a counselor.

## Partner with experts on suicide prevention

- Initiatives in consultation with local and national experts
- Partnership with NYU Department of Psychiatry to refine suicide prevention messaging



# Blue Lighting



Platform blue lighting

# Homeless and Mental Health Support



## **Implement Subway Safety Plan**

- New targeted outreach and resources

## **Deploy NYS Office of Mental Health services**

- Includes Safe Options Support (SOS) teams

# Coordination with NYPD



## Coordination with NYPD

- Continue to work with NYPD partners on priority locations
- Adding new priority stations for NYPD focus

# Incident Response

## **Deploy video analytics to better use existing CCTV**

- Monitor & intercede to prevent dangerous behavior

## **Install front facing cameras on subways**

- Real-time monitoring and incident response support



# Intrusion Detection Systems

## Intrusion Detection Systems

- Pilot new Track Intrusion Detection Systems to alert operators when people or objects enter the track
- Expand Laser Intrusion Detection Systems to secure critical tunnels



# Platform Screen Doors



## Platform Screen Doors

- Proposed pilot at Times Sq -42 St **7** ,  
3 Av **L** , & Sutphin Blvd-Archer Ave - JFK **E**

# Rail Road Initiatives

## **Secure Platform Ends & Rights-of-Way**

- Add and repair gates at ends of LIRR & MNR platforms
- Add new fencing along LIRR & MNR rights of way

## **Front-facing cameras live video**

- Pilot remote video access to cameras in fronts of trains



# Recommended Initiatives – Implementation

## Short Term 2022

- Release of Task Force Report
- Expanded Messaging Campaign
- Suicide Prevention Partnership
- NYPD Deployment to Platforms and Trains
- Mental Health Worker Deployment
- CCTV Video Analytics Pilot
- CCTV Train Camera Pilot

## Medium Term 2022-2024

- Platform Screen Doors Pilot
- Secure Platform Ends & Rights-of-Way
- Laser Detection System Expansion
- Track Intrusion Detection System Pilot
- Blue Lighting

## Long Term 2024-Beyond

- Implementation based on Platform Screen Doors, CCTV, Track Intrusion Pilots



# Track Trespassing Task Force February 2022