



# MILEPOSTS

A Newsletter for MTA Metro-North Railroad Customers

January 2018

- [MTA eTix®](#) ▪ [Trackwork](#) ▪ [Bronxville Facelift](#) ▪ [Port Chester Lift](#) ▪
- [Winter Weather](#) ▪ [Getaways](#) ▪ [Safety Rules](#) ▪ [Courtesy Corner](#) ▪

## Resolve to Make Your Smart Phone More Useful in the New Year!

Download [MTA eTix®](#) right now.



It's the free mobile ticketing app that allows you to purchase and use tickets directly from your smartphone or tablet,.



### Using [MTA eTix®](#) is easy:

- Once you've downloaded the app on your **iPhone** or **Android**, set up your account.
- Purchase your ticket with your debit or credit card.
- Be sure to activate your ticket on the app just **BEFORE** boarding your train.

### You can purchase any type of ticket you want with [MTA eTix®](#):

- Monthly
- Ten-trip
- One way
- Weekly
- Round-trip
- and, CityTickets

You can also take advantage of senior/disabled/medicare, military and family discounts using the app, as you would at the ticket window.

For more information, visit [www.mta.info/etix](http://www.mta.info/etix) or contact customer service at 511 or 877-690-5114 in CT.

[Back to Top](#)

## A New 32...

Two thousand feet of rail.  
One thousand block ties.

Ninety bracket ties, and a whole lot of elbow grease.

**When our Track Renewal Program identified Grand Central Terminal's Track 32 for a complete overhaul, our platform gang was deployed to tackle the job.**

*(Previously, Tracks 11 and 41 were "renewed" in 2017.)*

#### **The seven-person crew —**

comprised of a foreman, two machine operators and up to four trackmen — began the work in September 2017. And Track 32 is tentatively scheduled to be back in service this month!

**The track renewal replaces all of the worn down track components** with new ones — ensuring that our infrastructure, and your commute, remain safe and reliable.

Since September, the gang has worked Tuesday through Saturday — sometimes around the clock — removing the various clips, plates, lags, block ties and rail from the track.

After the removal, the team cleans the entire area and rids the track of leftover debris. Brand new block ties are then put carefully in place before the Building & Bridges mason gang cements the ties down.

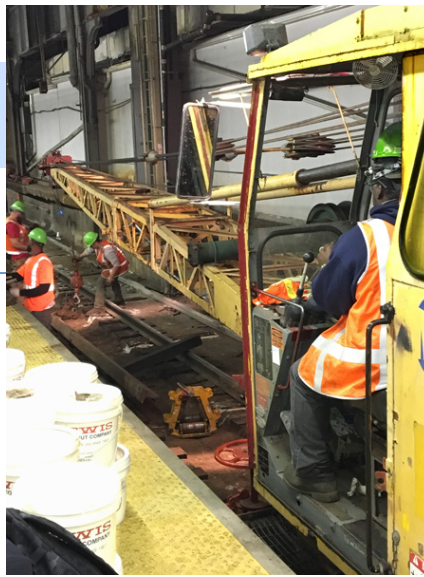
The platform gang then installs the new plates, lags, clips and long segments of continuously welded rail.

#### **Track renewal is not like regular maintenance.**

It is more like new construction. Everything is replaced for the better. Even drains that were once clogged or broken and platform edges that were cracking are fixed.

**It takes a lot of coordination and preparation to make sure all this work does not impact your daily commute.**

You may not notice the work while it is going on, but you will notice the difference in the quality of your ride.



[Back to Top](#)

## **..and Bronxville, Too!**

Our bustling Bronxville Station, located on the Harlem Line, was built in 1916 by New York Central Railroad — and its Spanish-Mission revival architecture is surely a rarity.

So how do we honor the nostalgia of one of our most historic stations while modernizing it to meet your current needs?

#### **We designate it for our Station Ownership Program.**

Established several years ago, Metro-North's Station Ownership Program identifies select stations (there are 124 of them along our lines to be exact) for repair on a rotating basis. Most recently, our Marble Hill Station, located along the Hudson Line, was upgraded via the program.

Bronxville boasts (there we go with those B's again), a lot of nice moldings and other interior and exterior features that you don't find in many stations.

**While the station is quite a sight to see, it is also in need of some TLC,**

including fresh paint, new signage, handrails, wire benches, lighting and windows, as well as platform enhancements.

Bronxville's platform repairs are essential to the project. Brand new edge-board will be installed on the outbound side of the station platform as well as new, long-lasting, yellow "Watch the Gap" signs, too.

#### **Our crews will also be tackling concrete and steel work for the platforms throughout the process.**

Our employees are on the job daily, including our paint gang, which has been busy applying fresh coats of paint to the station's exterior, canopies, overhangs, and railings.

And by spring 2018, Bronxville Station will boast a new look while retaining its historic appeal. Next on our Station Ownership Program list is Fleetwood and Tuckahoe. We'll tell you more in



## Things Are Looking Up (and Down) at Port Chester

Customers in wheelchairs.  
Moms and dads with strollers.  
An elderly couple.

What do they have in common?

The need for safe and reliable accommodations.

**That's why we recently installed an ADA-accessible elevator on the outbound platform at Port Chester Station.**

The busy station, located along our New Haven Line, serves thousands of you each day. And now you can "rise up" to their platform — and down to the street — with ease.



While that is certainly enough to "raise" your spirits — and luggage — you'll also have the opportunity to ascend a new steel staircase adjacent to the new elevator, along with a permanent ADA-accessible ramp built in place of a demolished MTA-owned auto school building on Westchester Avenue.

**We've also installed a safety feature relatively new to our stations: a Heat Trace cable system.**

Buried in the concrete at the base of the elevator and staircase, an orange cable — controlled by two sensors — emits heat once a certain temperature is reached. That heat, in turn, melts ice and snow around the vicinity.

**That should work really well to keep the area from freezing, and prevent slips and falls!**

## Spring Starts in March

Until then, stay informed about what to do when winter's worst hits. Be sure to read our [Guide to Winter Weather Travel](#) to be informed about any changes that inclement weather may have on your commute.



## Safety Rule of the Issue

It's the same story every year: "Slip, trip and fall" incidents still account for most of our customer injuries.

**Let's resolve to do things differently in 2018 and always**

- **Concentrating on watching your step** when getting on or off the train. Watch the gap!



Using the stair handrails, especially after rain/snow, when steps and platforms can become wet and slippery.

- Using the overpass/underpass/designated walkway to get from your station parking lot to the platform.
- Standing back from platform edges.

We bring you these rules because your safety is always our first priority all year long!

[Back to Top](#)

## Resolve to Do Something New...

...and save money, too.

### Try one of our One Day Getaways.

We've got discount packages to fulfill your every whim.

We have what you are looking for, whether you want to...



Stroll the decks of an aircraft carrier at The Intrepid Sea, Air & Space Museum



Make gourmet chocolates at Voilà Chocolat!



Walk the halls of dinosaurs at the American Museum of Natural History



Spin the wheel of fortune at Empire City Casino

...and we've got some things to do that you have never even thought of before!

See a [complete list of our Getaways](#) and go someplace new in the New Year!

[Back to Top](#)

## Courtesy Corner



It's a New Year's tradition. Once again we have spanned the globe (*this year we used Bing!*) to see how other cultures ring in the New Year.



**In Russia**, Grandfather Frost (that's their cheery name for Santa) and his granddaughter Snegurochka (*gesundheit!*) leave gifts under the New Year's tree!



**In Scotland**, a first-footer — a handsome dark-haired young man — is chosen and sent out of the house just before midnight so he can come back at midnight with whiskey, bread and coins. (*We call that having a hipster run your errands.*)



**In Spain**, they eat a dozen grapes (hopefully seedless) at the stroke of midnight and wear red underwear to bring good fortune. (*No wonder we always feel lucky!*)



**And on Metro-North**, to ensure a happy New Year, we ask you to keep your feet off the seats, take your garbage and your belongings with you when you leave the train and respect the rules when riding in a Quiet Car!

Have a happy, safe and courteous 2018!

Published by  
Corporate & Public Affairs, MTA Metro-North Railroad  
420 Lexington Avenue, New York, NY 10170

[www.mta.info](http://www.mta.info)

**Mileposts Archive**

---