
Appendix P: Construction Analyses

Appendix P-1: Traffic Analysis LOS Tables
2018 Existing Conditions
2033 No-Action Condition
2033 Construction Condition

SIGNALIZED INTERSECTIONS		NORTH SHORE RIGHT OF WAY																	AM	
		EXISTING CONDITIONS RESULTS versus NO-BUILD CONDITIONS RESULTS versus CONSTRUCTION CONDITIONS RESULTS versus CONSTRUCTION MITIGATED CONDITIONS RESULTS																		
ID	Description	Approach	Movement	V/C Ratio				Delay (sec)				LOS				IMPACT?			Proposed Mitigation	
				EX	NB	CS	MI	EX	NB	CS	MI	EX	NB	CS	MI	CS	MI	RESOLVE?		
1000	Richmond Terrace & Jersey Street	EB	L	0.10	0.10	0.21	0.21	8.7	7.3	7.6	7.6	A	A	A	A					
			T	0.49	0.54	0.55	0.55	13.8	13.1	12.3	12.3	B	B	B	B					
			R																	
		WB	L	0.02	0.03	0.03	0.03	25.3	21.3	22.0	22.0	C	C	C	C					
			T	0.45	0.56	0.58	0.58	29.0	26.5	27.6	27.6	C	C	C	C					
			R																	
		NB	L	0.08	0.09	0.10	0.10	28.4	31.4	31.5	31.5	C	C	C	C					
			T	0.15	0.18	0.22	0.22	36.9	39.8	40.6	40.6	D	D	D	D					
			R																	
		SB	L	0.07	0.08	0.08	0.08	28.4	31.4	31.4	31.4	C	C	C	C					
T	0.02		0.02	0.04	0.04	34.7	37.1	37.5	37.5	C	D	D	D							
R																				
Intersection			0.00	0.00	0.00	0.00	20.6	19.8	19.7	19.7	C	B	B	B						
1100	Richmond Terrace & Franklin Avenue	EB	T	0.36	0.38	0.44	0.44	3.4	3.7	3.8	3.8	A	A	A	A					
			R																	
		WB	L	0.33	0.40	0.42	0.42	16.8	20.7	21.0	21.0	B	C	C	C					
			T	0.23	0.26	0.26	0.26	36.6	37.1	37.1	37.1	D	D	D	D					
		NB	L																	
			T			0.00	0.00	12.0	13.8	13.4	13.4	B	B	B	B					
Intersection																				
1200	Richmond Terrace & Lafayette Avenue	EB	T	0.49	0.45	0.51	0.51	12.2	11.2	12.2	12.2	B	B	B	B					
			R																	
		WB	L	0.30	0.40	0.41	0.41	5.1	4.6	4.5	4.5	A	A	A	A					
			T	0.15	0.18	0.18	0.18	35.4	35.9	36.0	36.0	D	D	D	D					
		NB	L																	
			T			0.00	0.00	10.8	9.9	10.6	10.6	B	A	B	B					
Intersection																				
1300	Richmond Terrace & Bard Avenue	EB	L	0.39	0.45	0.55	0.55	7.9	8.6	10.1	10.1	A	A	B	B					
			T	0.23	0.29	0.30	0.30	6.6	7.1	7.2	7.2	A	A	A	A					
		WB	L																	
			T	0.22	0.25	0.26	0.26	41.1	41.7	42.0	42.0	D	D	D	D					
		NB	L																	
			T																	
		SB	L	0.03	0.04	0.08	0.08	38.0	38.1	38.8	38.8	D	D	D	D					
			T																	
		Intersection																		
		1400	Richmond Terrace & Broadway	EB	L	0.37	0.43	0.50	0.50	7.0	7.6	8.5	8.5	A	A	A	A			
T																				
WB	L			0.29	0.35	0.38	0.38	6.4	6.9	7.3	7.3	A	A	A	A					
	T																			
NB	L			0.30	0.33	0.39	0.39	44.6	45.4	46.8	46.8	D	D	D	D					
	T																			
SB	L			0.01	0.01	0.01	0.01	39.4	39.4	39.4	39.4	D	D	D	D					
	T																			
Intersection																				
1500	Richmond Terrace & Alaska Street			EB	L		0.50	0.68	0.68		11.9	15.7	15.7		B	B	B			
		T																		
		WB	L		0.39	0.43	0.43		10.5	11.1	11.1		B	B	B					
			T																	
		NB	L		0.14	0.15	0.15		43.3	43.6	43.6		D	D	D					
			T																	
		SB	L		0.00	0.09	0.09		40.9	42.4	42.4		D	D	D					
			T																	
		Intersection																		
		1600	Richmond Terrace & Jewett Avenue	WB	R	0.33	0.39	0.45	0.45	4.0	5.1	5.7	5.7	A	A	A	A			
NB	R			0.50	0.68	0.73	0.73	51.4	60.9	64.4	64.4	D	E	E	E					
SB	L																			
	T			0.53	0.61	0.76	0.76	17.6	20.2	26.5	26.5	B	C	C	C					
Intersection																				
2500	South Avenue & Forest Avenue	EB	L	0.16	0.18	0.21	0.21	18.8	19.1	19.7	19.7	B	B	B	B					
			T	0.30	0.33	0.33	0.33	24.5	24.9	25.0	25.0	C	C	C	C					
			R																	
		WB	L	0.28	0.31	0.32	0.32	20.8	21.7	21.8	21.8	C	C	C	C					
			T	0.13	0.15	0.15	0.15	22.6	22.7	22.7	22.7	C	C	C	C					
			R																	
		NB	L	0.11	0.12	0.12	0.12	15.0	15.2	15.2	15.2	B	B	B	B					
			T	0.28	0.31	0.33	0.33	16.8	17.3	17.5	17.5	B	B	B	B					
			R	0.24	0.27	0.30	0.30	16.6	16.9	17.4	17.4	B	B	B	B					
		SB	L	0.08	0.09	0.09	0.09	14.9	15.1	15.1	15.1	B	B	B	B					
T	0.24		0.26	0.26	0.26	16.3	16.7	16.7	16.7	B	B	B	B							
R	0.10		0.11	0.13	0.13	14.8	14.9	15.2	15.2	B	B	B	B							
Intersection																				

Legend:
 Indicates movements that trigger CEQR impact criteria.
 Indicates new movements created as a result of the Proposed Action that experience a LOS of E or worse under proposed future conditions.

UNSIGNALIZED INTERSECTIONS	NORTH SHORE RIGHT OF WAY EXISTING CONDITIONS RESULTS versus NO-BUILD CONDITIONS RESULTS versus CONSTRUCTION CONDITIONS RESULTS versus CONSTRUCTION MITIGATED CONDITIONS	AM
----------------------------	--	----

ID	Description	Intersection			Delay (sec)				LOS				IMPACT?			Proposed Mitigation	
		Direction	Approach Type	Movement	EX	NB	CS	MI	EX	NB	CS	MI	CS	MI	RESOLVE?		
1500	Richmond Terrace & Alaska Street	EB	MAJOR	L													
			MAJOR	T	0.0					A							
			MAJOR	R													
		WB	MAJOR	L													
			MAJOR	T	0.2						A						
			MAJOR	R													
		NB	MINOR	L													
			MINOR	T	17.8						C						
			MINOR	R													
		SB	MINOR	L													
			MINOR	T	19.3						C						
			MINOR	R													
			Intersection			0.6					A						
1700	Richmond Terrace & Heberton Avenue	EB	MINOR	L	11.4	12.0	13.2	13.2	B	B	B	B					
			MINOR	R													
		NB	MAJOR	L													
			MAJOR	T	1.2	1.2	1.3	1.3	A	A	A	A					
		SB	MAJOR	T	0.0	0.0	0.0	0.0	A	A	A	A					
			MAJOR	R													
			Intersection			1.3	1.4	1.3	1.3	A	A	A	A				

SIGNALIZED INTERSECTIONS				NORTH SHORE RIGHT OF WAY EXISTING CONDITIONS RESULTS versus NO-BUILD CONDITIONS RESULTS versus CONSTRUCTION CONDITIONS RESULTS versus CONSTRUCTION MITIGATED CONDITIONS RESULTS													PM			
ID	Description	Approach	Movement	V/C Ratio				Delay (sec)				LOS				IMPACT?			Proposed Mitigation	
				EX	NB	CS	MI	EX	NB	CS	MI	EX	NB	CS	MI	CS	MI	RESOLVE?		
1000	Richmond Terrace & Jersey Street	EB	L	0.01	0.02	0.04	0.04	17.1	35.4	35.4	25.0	B	D	D	C				Modify signal timing: Shift 1 sec of green time from the NB/SB phase to the EB/WB phase. [NB/SB split shifts from 35 sec to 34 sec. EB split shifts from 74 sec to 75 sec. WB split shifts from 63 sec to 64 sec.]	
			T	0.69	1.07	1.08	1.06	28.4	85.2	87.7	72.5	C	F	F	E					
			R																	
		WB	L	0.02	0.56	0.64	0.57	13.2	27.5	29.8	26.7	B	C	C	C					
			T	0.81	1.40	1.42	1.39	29.8	214.8	223.2	211.7	C	F	F	F	YES		RESOLVE		
			R																	
		NB	L	0.17	0.18	0.19	0.19	31.6	31.7	31.9	32.7	C	C	C	C					
			T	0.09	0.25	0.25	0.26	35.1	37.9	37.9	38.8	D	D	D	D					
			R																	
		SB	L	0.02	0.02	0.05	0.06	29.6	29.7	30.1	30.8	C	C	C	C					
			T	0.10	0.11	0.24	0.24	35.1	35.2	37.1	38.0	D	D	D	D					
			R																	
Intersection		0.00	0.00	0.00	0.00	29.4	140.3	142.2	130.7	C	F	F	F							
1100	Richmond Terrace & Franklin Avenue	EB	T	0.46	0.72	0.72	0.70	10.1	16.3	16.4	15.2	B	B	B	B				Modify signal timing: Shift 2 sec of green time from the NB phase to the EB/WB phase. [NB split shifts from 36 sec to 34 sec. EB/WB split shifts from 84 sec to 86 sec.]	
			R																	
		WB	L	0.71	1.42	1.48	1.37	5.9	198.1	227.6	192.3	A	F	F	F	YES		RESOLVE		
			T	0.19	0.21	0.25	0.27	35.8	36.2	36.9	39.9	D	D	D	D					
		NB	L																	
			R																	
Intersection				0.00	0.00	9.0	118.1	136.2	116.0	A	F	F	F							
1200	Richmond Terrace & Lafayette Avenue	EB	L	0.57	0.78	0.78	0.75	13.9	19.8	19.9	17.0	B	B	B	B				Modify signal timing: Shift 3 sec of green time from the NB phase to the EB/WB phase. [NB split shifts from 36 sec to 33 sec. EB/WB split shifts from 84 sec to 87 sec.]	
			R																	
		WB	L	0.68	1.54	1.63	1.47	5.1	246.1	287.4	237.3	A	F	F	F	YES		RESOLVE		
			T	0.28	0.31	0.31	0.35	37.7	38.4	38.4	41.6	D	D	D	D					
		NB	L																	
			R																	
Intersection				0.00	0.00	10.7	143.9	169.9	140.9	B	F	F	F							
1300	Richmond Terrace & Bard Avenue	EB	L	0.44	0.76	0.76	0.76	8.6	15.5	15.7	15.7	A	B	B	B					
			T	0.50	0.80	0.85	0.85	9.3	17.3	20.2	20.2	A	B	C	C					
			R																	
		WB	L	0.31	0.36	0.34	0.34	41.9	42.9	42.6	42.6	D	D	D	D					
			T																	
			R																	
		NB	L	0.07	0.08	0.15	0.15	38.5	38.7	39.8	39.8	D	D	D	D					
			T																	
			R																	
		Intersection				0.00	0.00	12.9	18.7	20.4	20.4	B	B	C	C					
1400	Richmond Terrace & Broadway	EB	L	0.42	0.68	0.69	0.68	7.5	11.6	11.9	11.2	A	B	B	B				Modify signal timing: Shift 1 sec of green time from the NB/SB phase to the EB/WB phase. [NB/SB split shifts from 28 sec to 27 sec. EB/WB split shifts from 92 sec to 93 sec.]	
			T																	
			R																	
		WB	L	0.61	0.98	1.06	1.04	10.3	36.8	58.5	54.0	B	D	E	D	YES		RESOLVE		
			T																	
			R																	
		NB	L	0.43	0.50	0.50	0.53	48.4	50.9	50.9	52.9	D	D	D	D					
			T																	
			R																	
		SB	L	0.06	0.07	0.07	0.07	40.0	40.1	40.1	40.9	D	D	D	D					
T																				
R																				
Intersection				0.00	0.00	12.2	27.2	39.4	36.8	B	C	D	D							
1500	Richmond Terrace & Alaska Street	EB	L		0.79	0.80	0.76			19.7	20.4	16.4		B	C	B			Modify signal timing: Shift 4 sec of green time from the NB/SB phase to the EB/WB phase. [NB/SB split shifts from 26 sec to 22 sec. EB/WB split shifts from 84 sec to 88 sec.]	
			T																	
			R																	
		WB	L		1.02	1.10	1.04			52.3	77.5	56.6		D	E	E	YES			RESOLVE
			T																	
			R																	
		NB	L		0.25	0.26	0.31			45.6	46.0	51.0		D	D	D				
			T																	
			R																	
		SB	L		0.01	0.20	0.24			41.0	43.7	48.1		D	D	D				
T																				
R																				
Intersection				0.00	0.00			37.5	51.7	39.2		D	D	D						
1600	Richmond Terrace & Jewett Avenue	WB	R	0.58	0.78	0.85	0.85	6.5	12.2	16.0	16.0	A	B	B	B				Unmitigable.	
			R	0.43	1.18	1.18	1.18	49.1	164.4	164.4	164.4	D	F	F	F					
		NB	L	0.79	1.08	1.11	1.11	27.2	81.7	92.6	92.6	C	F	F	F	YES	YES	UNMITIGABLE		
			T																	
		Intersection				0.00	0.00	18.8	63.0	67.1	67.1	B	E	E	E					
2500	South Avenue & Forest Avenue	EB	L	0.22	0.90	0.91	0.87	17.7	55.3	56.6	49.5	B	E	E	D				Modify signal timing: Shift 1 sec of green time from the NB/SB phase to the EBL/WBL phase. [NB/SB split shifts from 39 sec to 38 sec. EBL/WBL split shifts from 19 sec to 20 sec.]	
			T	0.56	1.15	1.15	1.15	29.2	109.9	109.9	109.9	C	F	F	F					
			R																	
		WB	L	0.54	0.96	1.00	0.96	23.8	68.9	78.4	66.7	C	E	E	E	YES		RESOLVE		
			T	0.39	0.69	0.69	0.69	26.2	31.9	31.9	31.9	C	C	C	C					
			R																	
		NB	L	0.18	0.39	0.41	0.44	19.7	26.5	27.5	30.1	B	C	C	C					
			T	0.44	0.52	0.52	0.54	23.2	25.0	25.0	26.1	C	C	C	C					
			R	0.38	0.77	0.77	0.80	22.4	34.8	34.9	37.4	C	C	C	C					
		SB	L	0.16	0.20	0.20	0.21	19.6	20.5	20.5	21.4	B	C	C	C					
			T	0.37	0.74	0.76	0.78	21.9	31.8	32.9	35.0	C	C	C	C					
			R	0.23	0.25	0.27	0.28	20.0	20.4	20.7	21.4	C	C	C	C					
		Intersection				0.00	0.00	24.3	57.5	58.6	57.5	C	E	E	E					

Notes:
Legend:
Indicates movements that trigger CEQR impact criteria.
Indicates new movements created as a result of the Proposed Action that experience a LOS of E or worse under proposed future conditions.

UNSIGNALIZED INTERSECTIONS

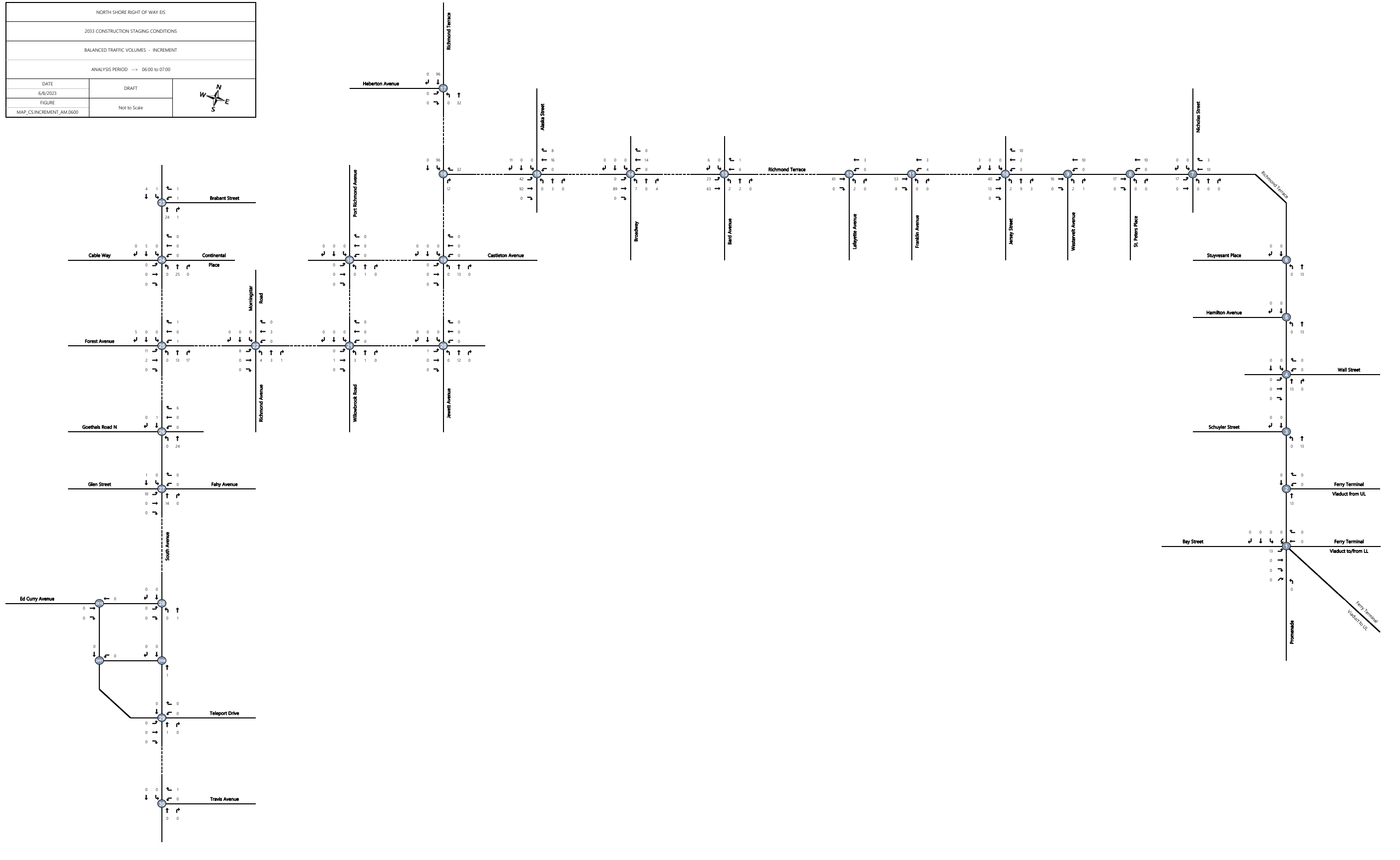
NORTH SHORE RIGHT OF WAY
 EXISTING CONDITIONS RESULTS versus NO-BUILD CONDITIONS RESULTS versus CONSTRUCTION CONDITIONS RESULTS versus CONSTRUCTION MITIGATED CONDITIONS

PM

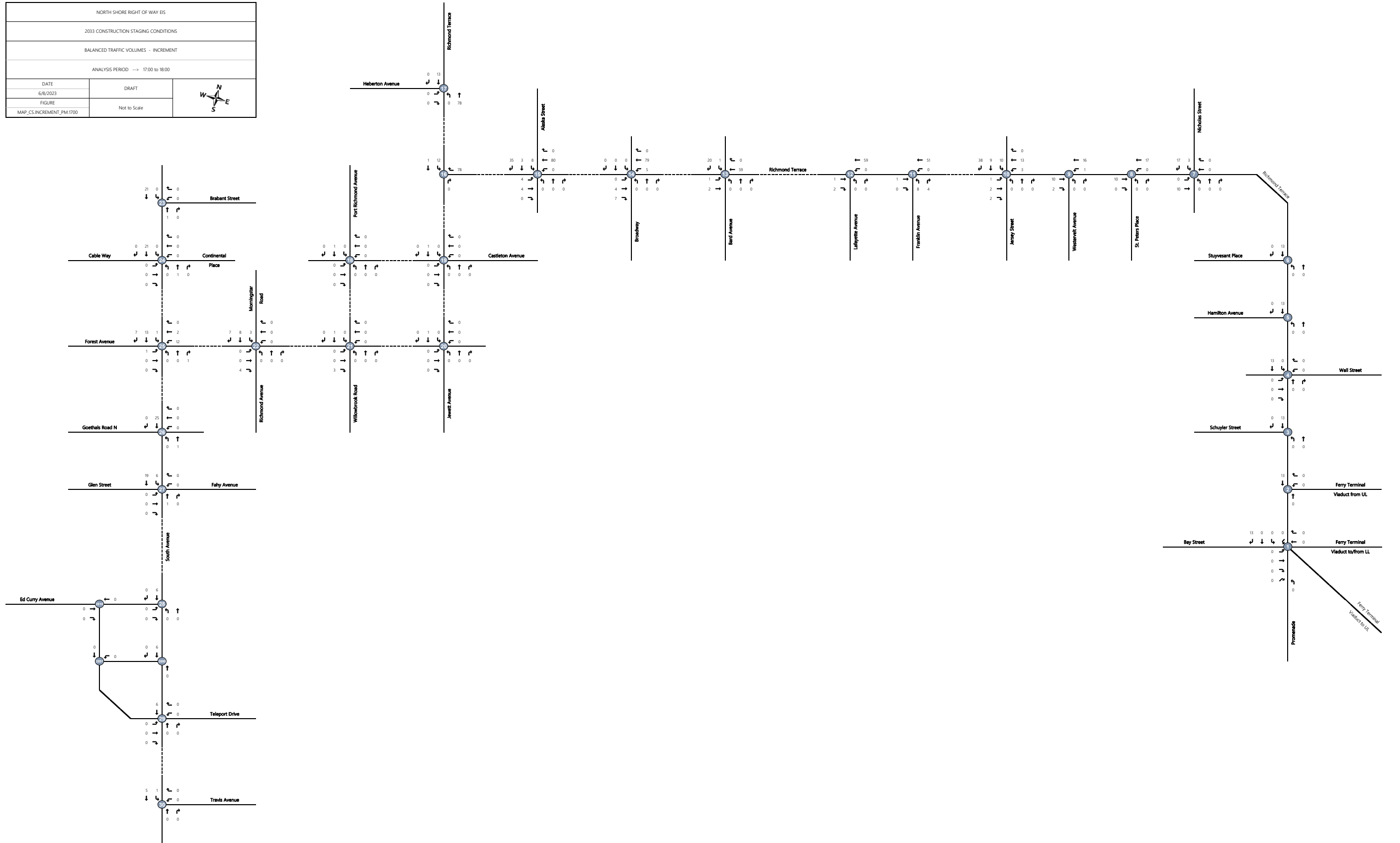
ID	Description	Intersection			Delay (sec)				LOS				IMPACT?			Proposed Mitigation	
		Direction	Approach Type	Movement	EX	NB	CS	MI	EX	NB	CS	MI	CS	MI	RESOLVE?		
1500	Richmond Terrace & Alaska Street	EB	MAJOR	L													
			MAJOR	T	0.0					A							
			MAJOR	R													
		WB	MAJOR	L													
			MAJOR	T	0.3					A							
			MAJOR	R													
		NB	MINOR	L													
			MINOR	T	40.6					E							
			MINOR	R													
		SB	MINOR	L													
			MINOR	T	13.7					B							
			MINOR	R													
	Intersection			1.5				A									
1700	Richmond Terrace & Heberton Avenue	EB	MINOR	L	23.3	43.1	51.0	51.0	C	E	F	F					
			MINOR	R													
		NB	MAJOR	L													
			MAJOR	T	1.9	2.7	2.9	2.9	A	A	A	A					
		SB	MAJOR	T	0.0	0.0	0.0	0.0	A	A	A	A					
			MAJOR	R													
			Intersection			2.1	3.1	3.5	3.5	A	A	A	A				

Appendix P-2: 2033 Construction Condition Traffic Volume Increment Figures

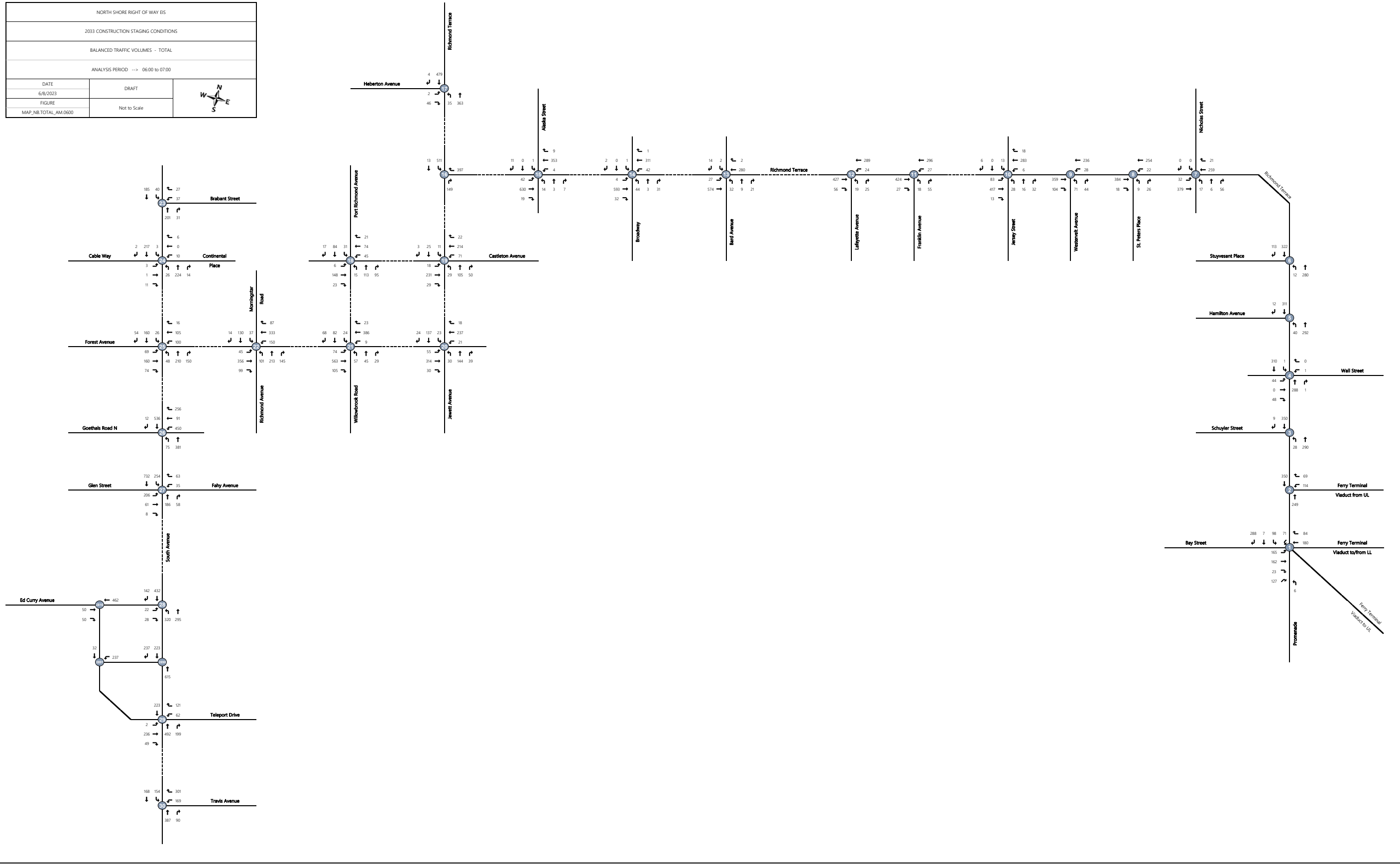
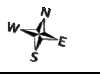
NORTH SHORE RIGHT OF WAY EIS		
2033 CONSTRUCTION STAGING CONDITIONS		
BALANCED TRAFFIC VOLUMES - INCREMENT		
ANALYSIS PERIOD --> 06:00 to 07:00		
DATE	DRAFT	
6/8/2023		
FIGURE	Not to Scale	
MAP_CS.INCREMENT_AM.0600		



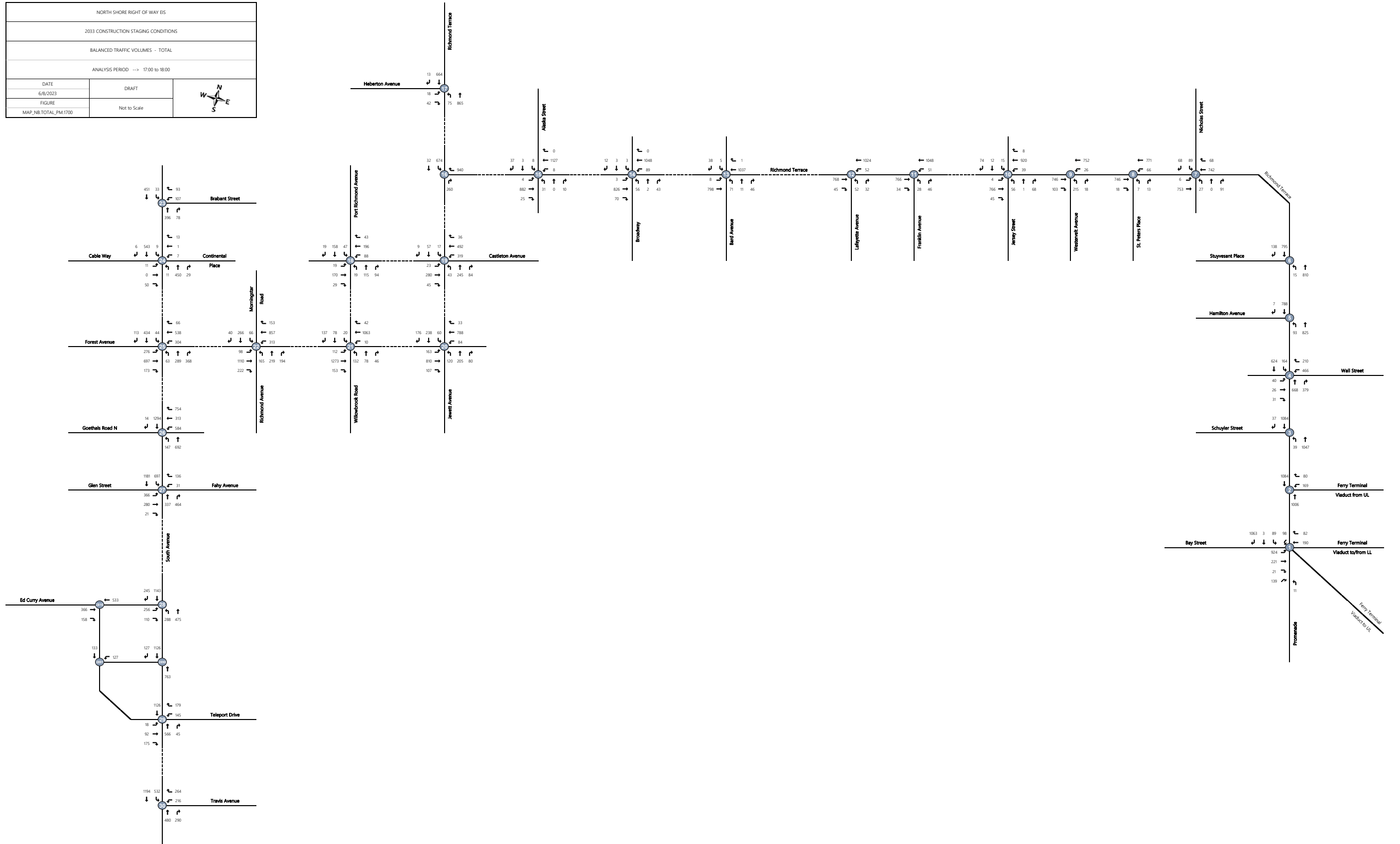
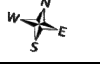
NORTH SHORE RIGHT OF WAY EIS		
2033 CONSTRUCTION STAGING CONDITIONS		
BALANCED TRAFFIC VOLUMES - INCREMENT		
ANALYSIS PERIOD --> 17:00 to 18:00		
DATE	DRAFT	
6/8/2023		
FIGURE	Not to Scale	
MAP_CS.INCREMENT_PM.1700		



NORTH SHORE RIGHT OF WAY EIS	
2033 CONSTRUCTION STAGING CONDITIONS	
BALANCED TRAFFIC VOLUMES - TOTAL	
ANALYSIS PERIOD --> 06:00 to 07:00	
DATE	DRAFT
6/8/2023	
FIGURE	Not to Scale
MAP_NB_TOTAL_AM.0600	

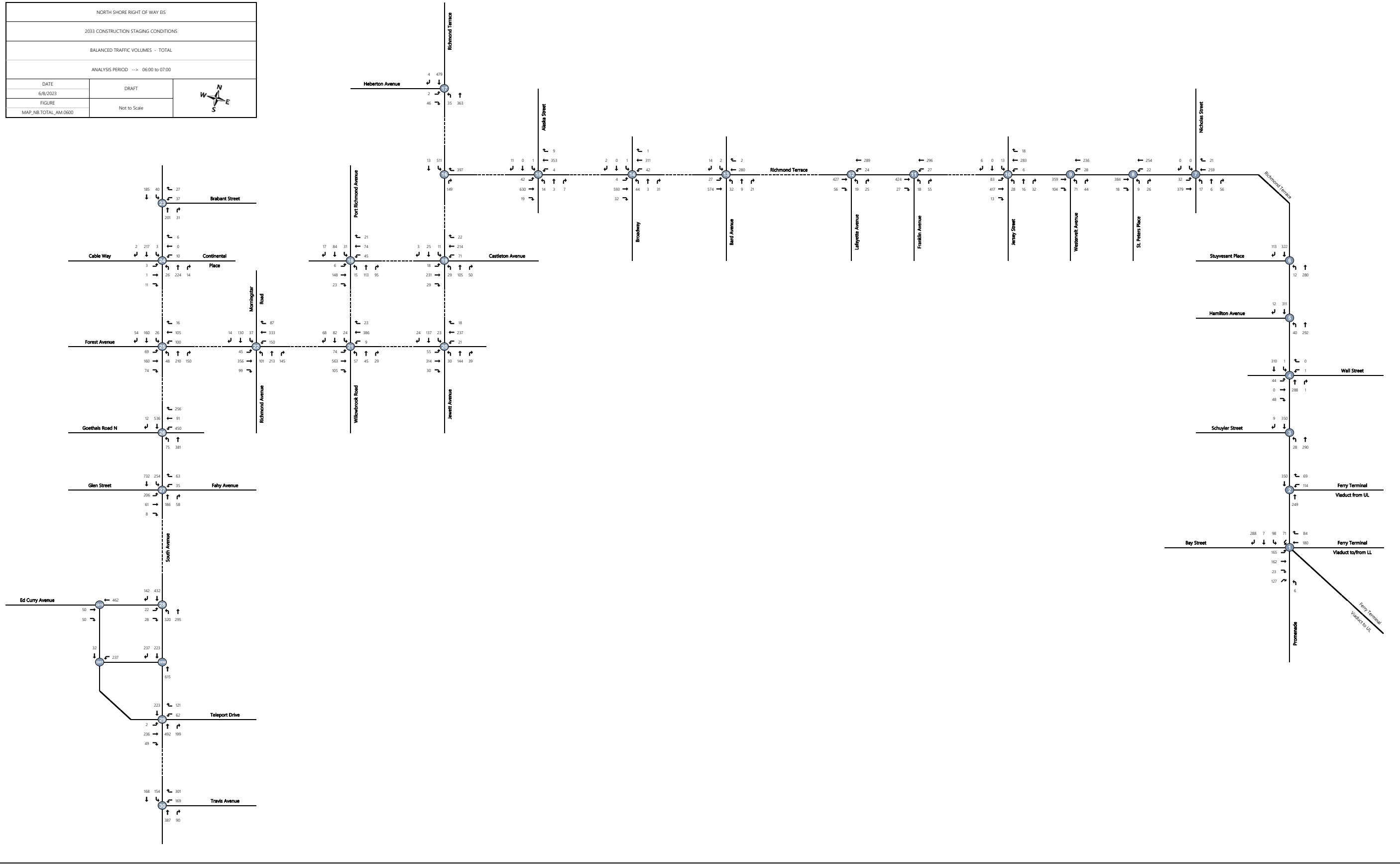
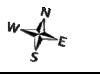


NORTH SHORE RIGHT OF WAY EIS	
2033 CONSTRUCTION STAGING CONDITIONS	
BALANCED TRAFFIC VOLUMES - TOTAL	
ANALYSIS PERIOD --> 17:00 to 18:00	
DATE	DRAFT
6/8/2023	
FIGURE	Not to Scale
MAP_NB.TOTAL_PM1700	

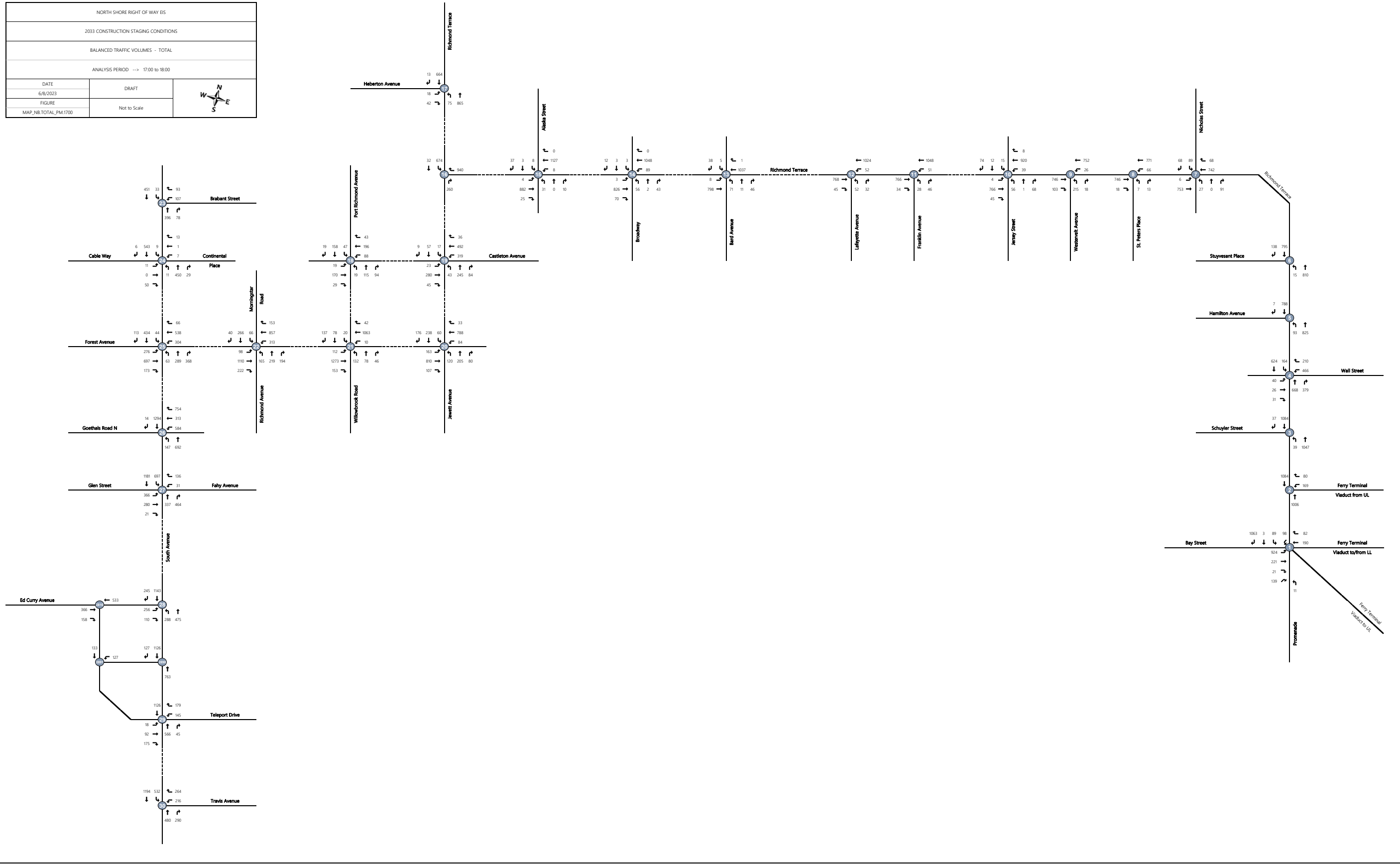
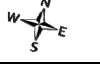


Appendix P-3: 2033 Construction Condition Traffic Volume Figures

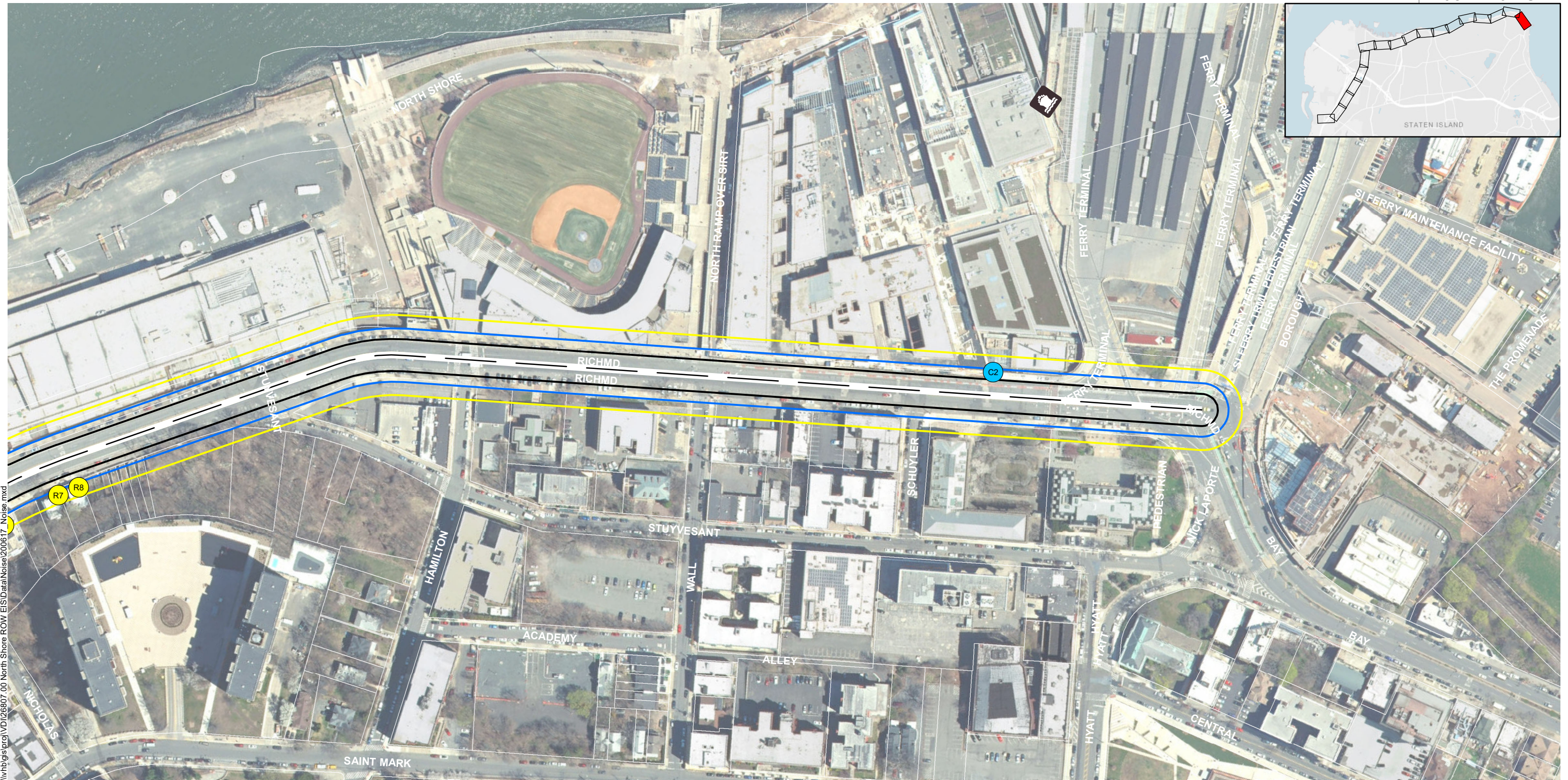
NORTH SHORE RIGHT OF WAY EIS	
2033 CONSTRUCTION STAGING CONDITIONS	
BALANCED TRAFFIC VOLUMES - TOTAL	
ANALYSIS PERIOD --> 06:00 to 07:00	
DATE	DRAFT
6/8/2023	
FIGURE	Not to Scale
MAP_NB_TOTAL_AM.0600	



NORTH SHORE RIGHT OF WAY EIS	
2033 CONSTRUCTION STAGING CONDITIONS	
BALANCED TRAFFIC VOLUMES - TOTAL	
ANALYSIS PERIOD --> 17:00 to 18:00	
DATE	DRAFT
6/8/2023	
FIGURE	Not to Scale
MAP_NB.TOTAL_PM1700	



Appendix P-4: Construction Noise Figures

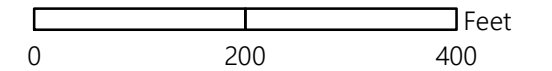


I:\v\hgis\proj\VD\126807_00 North Shore ROW EIS\Data\Noise\200617_Noise.mxd

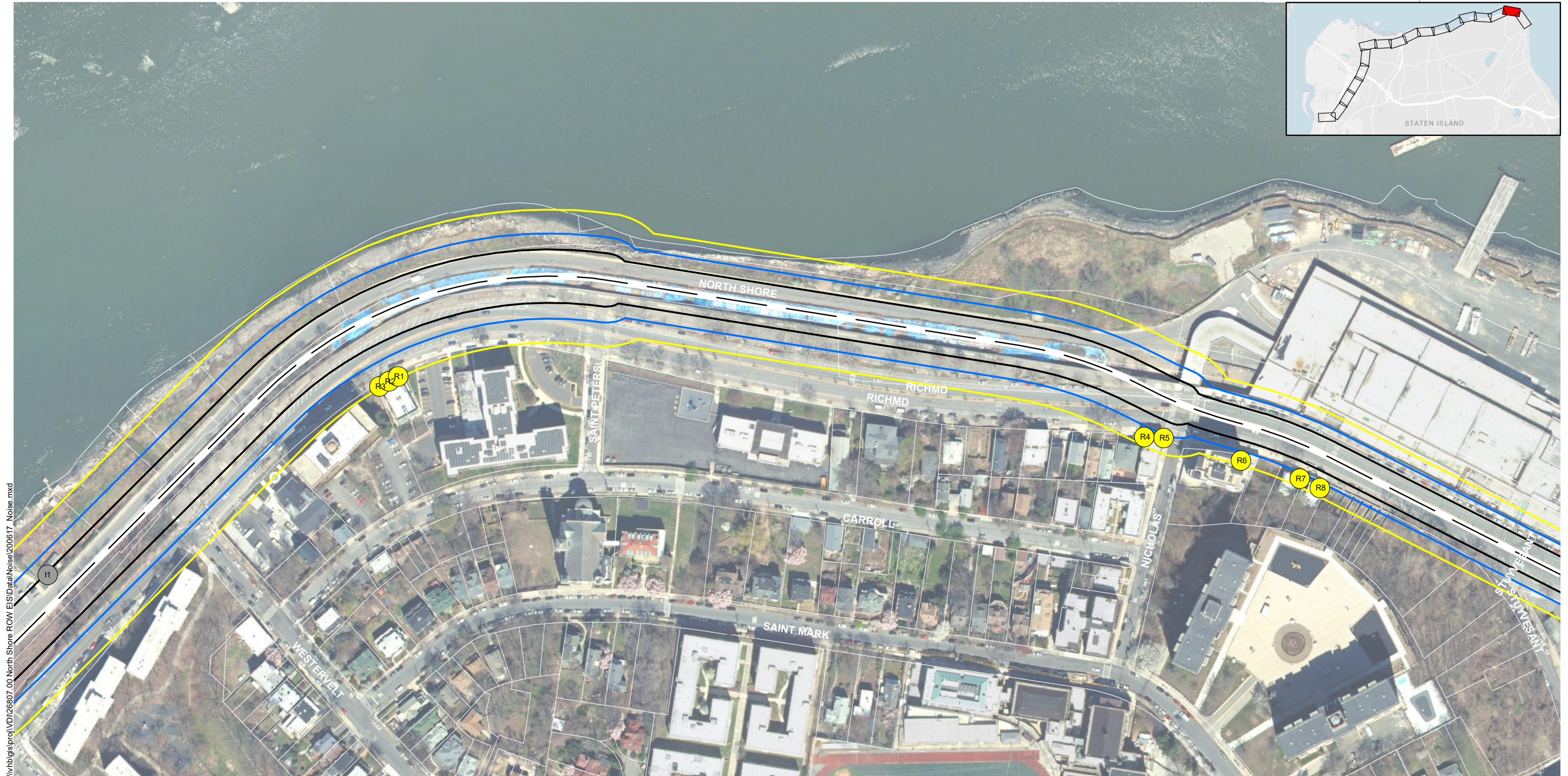
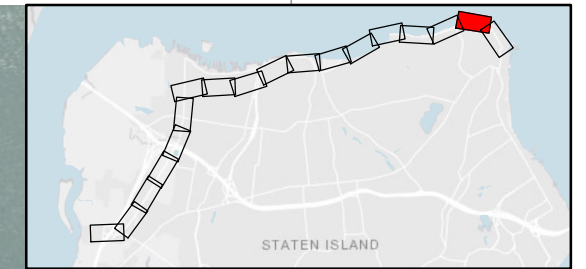
- Construction Noise Impacts (Residential)
- Construction Noise Impacts (Commercial/Institutional)
- Construction Noise Impacts (Industrial)
- Construction Noise Impact Limit for Residential Properties (80 dBA Leq8hr)
- Construction Noise Impact Limit for Commercial/Institutional Propertites (85 dBA Leq8hr)
- Construction Noise Impact Limit for Industrial Propertites (90 dBA Leq8hr)
- Station
- BRT Alignment

Staten Island North Shore BRT | Staten Island, NY

Construction Noise Assessment Map



July 15, 2020

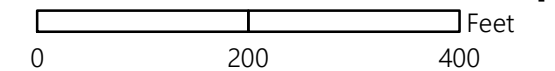


\\vhbgsproj\VDI\26807_00_North Shore ROW EIS\Data\Noise\200617_Noise.mxd

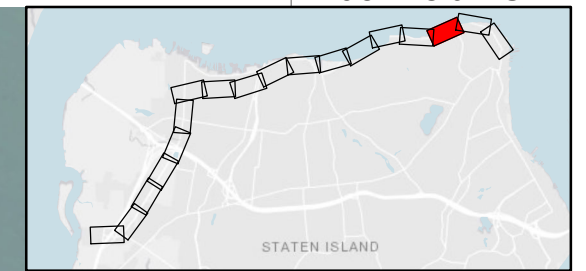
- Construction Noise Impacts (Residential)
 - Construction Noise Impacts (Commercial/Institutional)
 - Construction Noise Impacts (Industrial)
 - Construction Noise Impact Limit for Residential Properties (80 dBA Leq8hr)
 - Construction Noise Impact Limit for Commercial/Institutional Propertites (85 dBA Leq8hr)
 - Construction Noise Impact Limit for Industrial Propertites (90 dBA Leq8hr)
- Station
 - BRT Alignment

Staten Island North Shore BRT | Staten Island, NY

Construction Noise Assessment Map



July 15, 2020

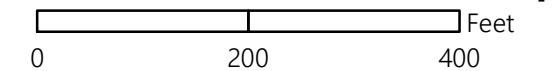


I:\nhgis\proj\VD\26807.00 North Shore ROW EIS\Data\Noise\200617_Noise.mxd

- Construction Noise Impacts (Residential)
 - Construction Noise Impacts (Commercial/Institutional)
 - Construction Noise Impacts (Industrial)
 - Construction Noise Impact Limit for Residential Properties (80 dBA Leq8hr)
 - Construction Noise Impact Limit for Commercial/Institutional Propertites (85 dBA Leq8hr)
 - Construction Noise Impact Limit for Industrial Propertites (90 dBA Leq8hr)
- Station
 - BRT Alignment

Staten Island North Shore BRT | Staten Island, NY

Construction Noise Assessment Map



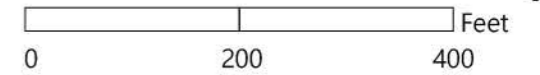
July 15, 2020



- Construction Noise Impacts (Residential)
- Construction Noise Impacts (Commercial/Institutional)
- Construction Noise Impacts (Industrial)
- Construction Noise Impact Limit for Residential Properties (80 dBA Leq8hr)
- Construction Noise Impact Limit for Commercial/Institutional Propertites (85 dBA Leq8hr)
- Construction Noise Impact Limit for Industrial Propertites (90 dBA Leq8hr)
- Station
- BRT Alignment

Staten Island North Shore BRT | Staten Island, NY

Construction Noise Assessment Map



July 15, 2020

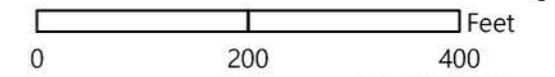


I:\v\h\g\is\proj\VD\126807.00 North Shore ROW EIS Data\Noise\200617_Noise.mxd

- Construction Noise Impacts (Residential)
- Construction Noise Impacts (Commercial/Institutional)
- Construction Noise Impacts (Industrial)
- Construction Noise Impact Limit for Residential Properties (80 dBA Leq8hr)
- Construction Noise Impact Limit for Commercial/Institutional Propertites (85 dBA Leq8hr)
- Construction Noise Impact Limit for Industrial Propertites (90 dBA Leq8hr)
- Station
- BRT Alignment

Staten Island North Shore BRT | Staten Island, NY

Construction Noise Assessment Map



July 15, 2020

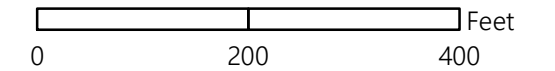


I:\nhgis\proj\VDI26807.00 North Shore ROW EIS\Data\Noise\200617_Noise.mxd

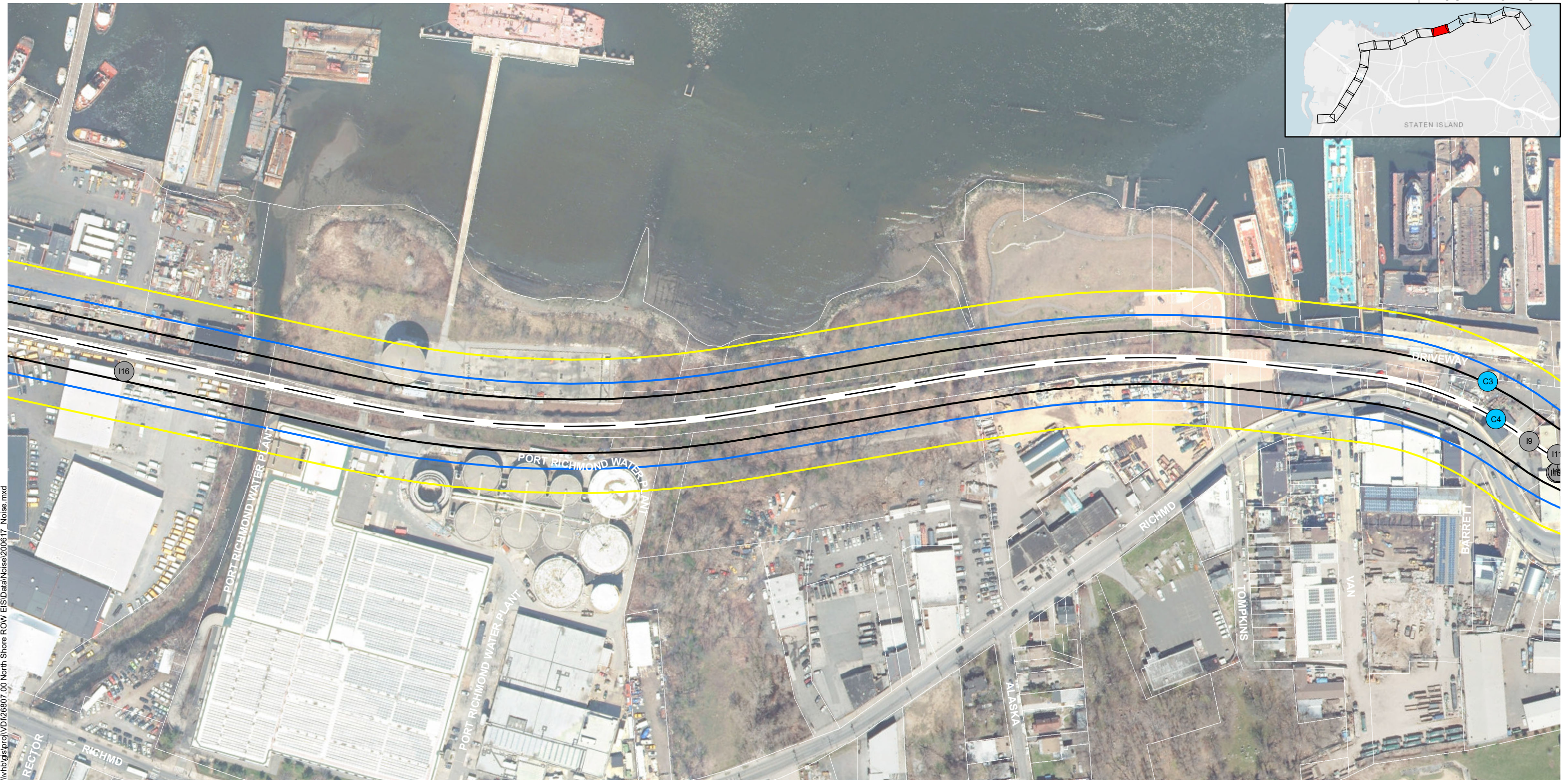
- Construction Noise Impacts (Residential)
- Construction Noise Impacts (Commercial/Institutional)
- Construction Noise Impacts (Industrial)
- Construction Noise Impact Limit for Residential Properties (80 dBA Leq8hr)
- Construction Noise Impact Limit for Commercial/Institutional Propertites (85 dBA Leq8hr)
- Construction Noise Impact Limit for Industrial Propertites (90 dBA Leq8hr)
- Station
- BRT Alignment

Staten Island North Shore BRT | Staten Island, NY

Construction Noise Assessment Map



July 15, 2020

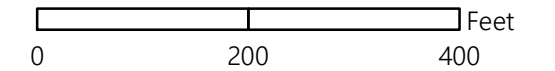


I:\v\hgis\proj\VD\126807.00 North Shore ROW EIS\Data\Noise\200617 Noise.mxd

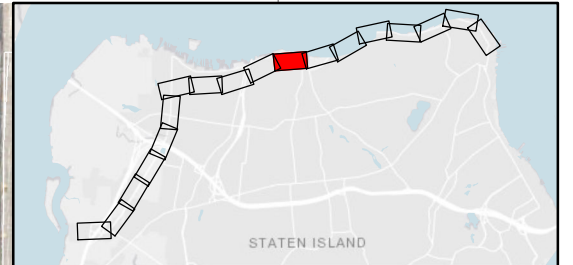
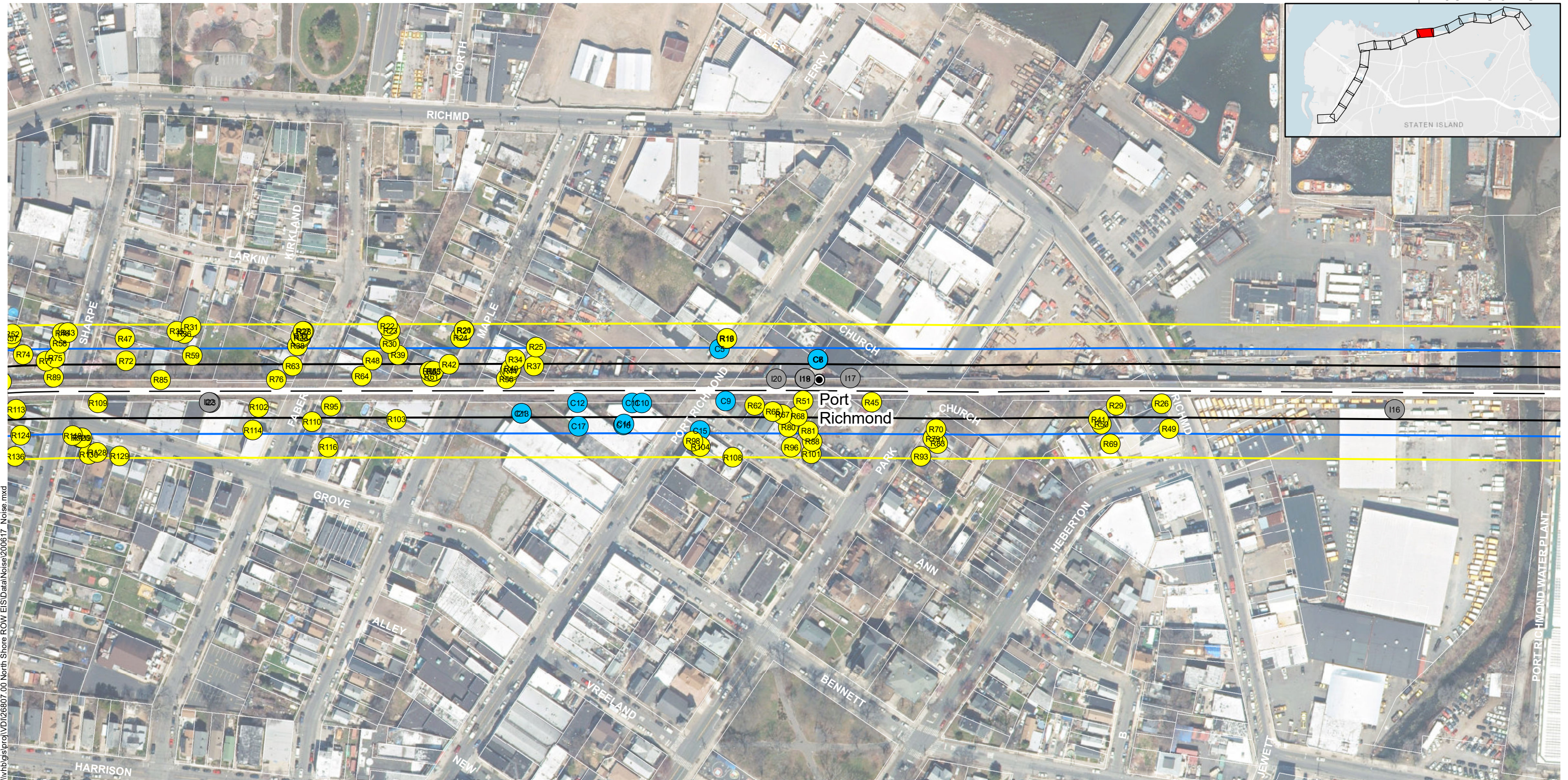
- Construction Noise Impacts (Residential)
- Construction Noise Impacts (Commercial/Institutional)
- Construction Noise Impacts (Industrial)
- Construction Noise Impact Limit for Residential Properties (80 dBA Leq8hr)
- Construction Noise Impact Limit for Commercial/Institutional Propertites (85 dBA Leq8hr)
- Construction Noise Impact Limit for Industrial Propertites (90 dBA Leq8hr)
- Station
- BRT Alignment

Staten Island North Shore BRT | Staten Island, NY

Construction Noise Assessment Map



July 15, 2020

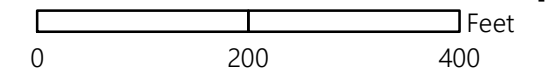


I:\v\hgis\proj\VD126807_00 North Shore ROW EIS\Data\Noise\200617 Noise.mxd

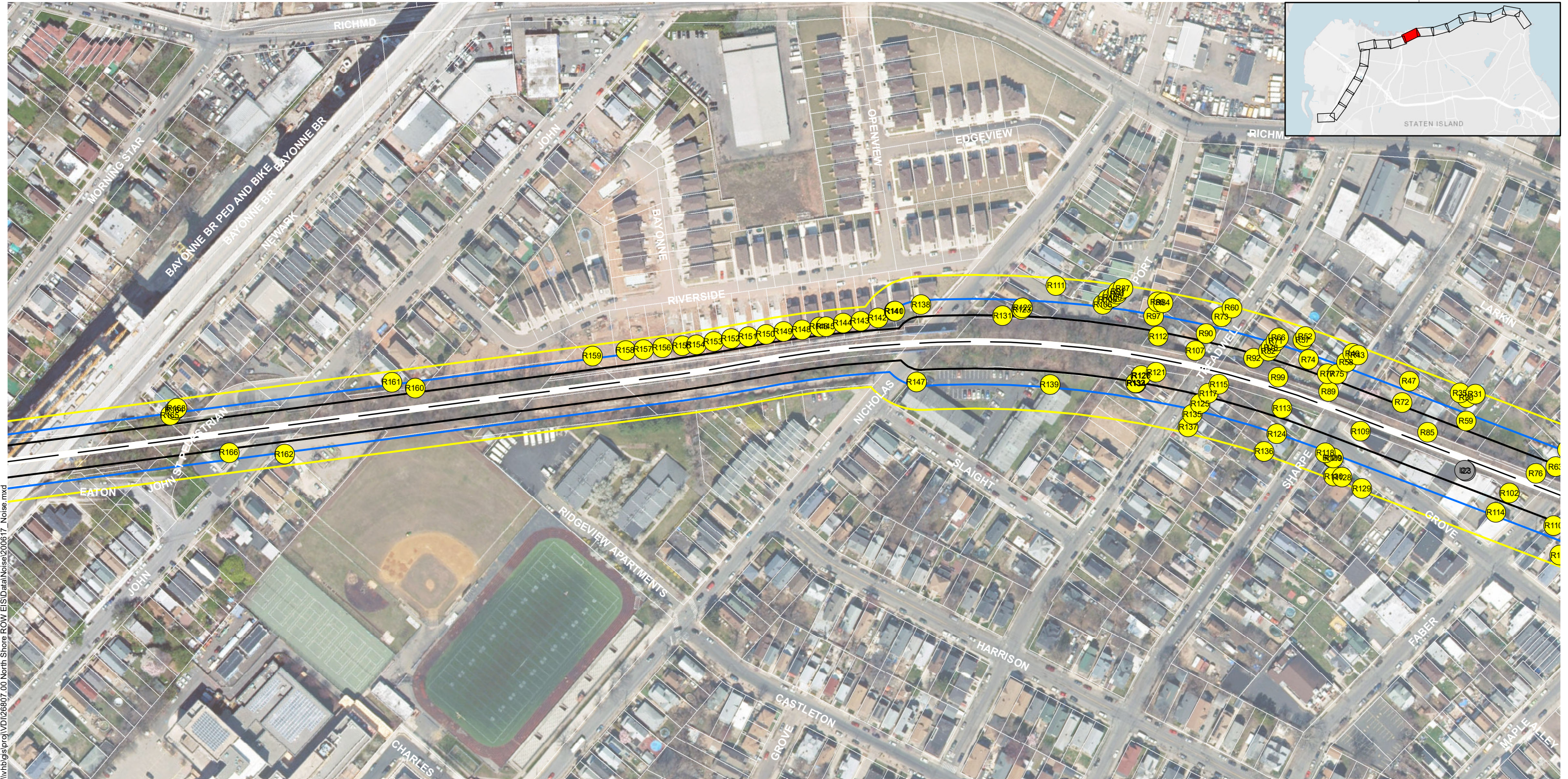
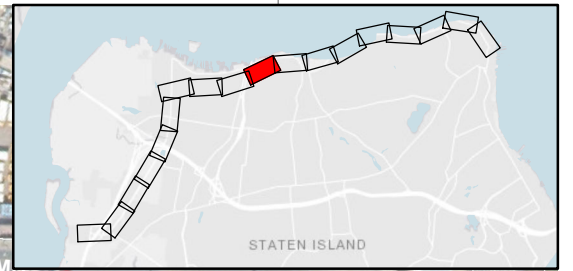
- Construction Noise Impacts (Residential)
 - Construction Noise Impacts (Commercial/Institutional)
 - Construction Noise Impacts (Industrial)
 - Construction Noise Impact Limit for Residential Properties (80 dBA Leq8hr)
 - Construction Noise Impact Limit for Commercial/Institutional Propertites (85 dBA Leq8hr)
 - Construction Noise Impact Limit for Industrial Propertites (90 dBA Leq8hr)
- Station
 - BRT Alignment

Staten Island North Shore BRT | Staten Island, NY

Construction Noise Assessment Map



July 15, 2020

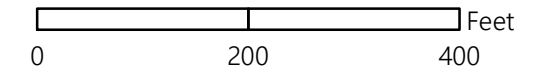


I:\nhgis\proj\VD\126807.00 North Shore ROW EIS\Data\Noise\200617_Noise.mxd

- Construction Noise Impacts (Residential)
- Construction Noise Impacts (Commercial/Institutional)
- Construction Noise Impacts (Industrial)
- Construction Noise Impact Limit for Residential Properties (80 dBA Leq8hr)
- Construction Noise Impact Limit for Commercial/Institutional Propertites (85 dBA Leq8hr)
- Construction Noise Impact Limit for Industrial Propertites (90 dBA Leq8hr)
- Station
- BRT Alignment

Staten Island North Shore BRT | Staten Island, NY

Construction Noise Assessment Map



July 15, 2020

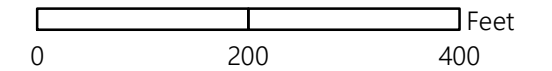


I:\nhgis\proj\VD126807.00 North Shore ROW EIS\Data\Noise200617_Noise.mxd

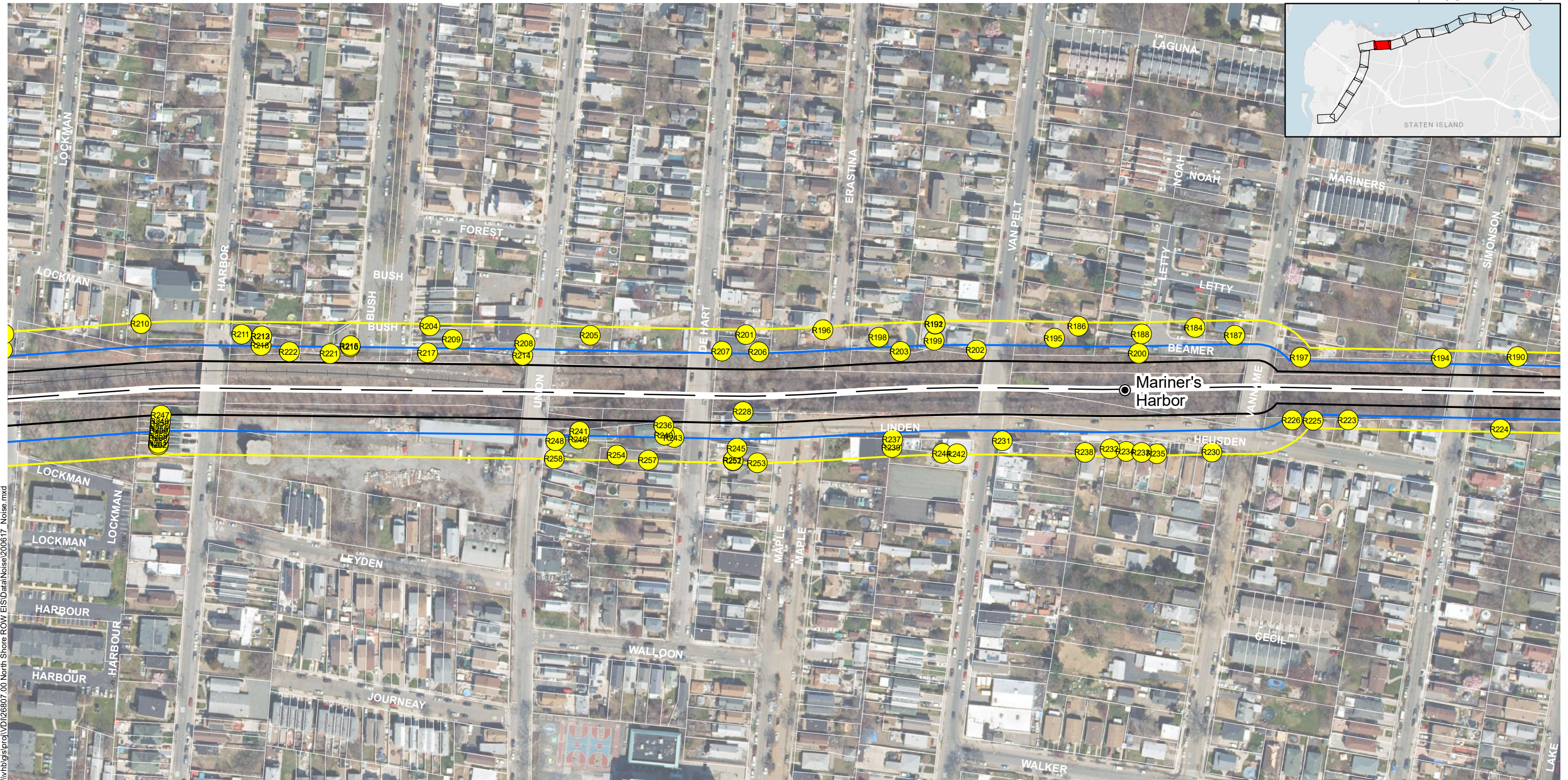
- Construction Noise Impacts (Residential)
- Construction Noise Impacts (Commercial/Institutional)
- Construction Noise Impacts (Industrial)
- Construction Noise Impact Limit for Residential Properties (80 dBA Leq8hr)
- Construction Noise Impact Limit for Commercial/Institutional Propertites (85 dBA Leq8hr)
- Construction Noise Impact Limit for Industrial Propertites (90 dBA Leq8hr)
- Station
- BRT Alignment

Staten Island North Shore BRT | Staten Island, NY

Construction Noise Assessment Map



July 15, 2020

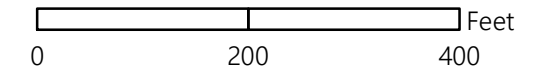


I:\nhgis\proj\VD\26807_00_North Shore ROW_EIS\Data\Noise\200617_Noise.mxd

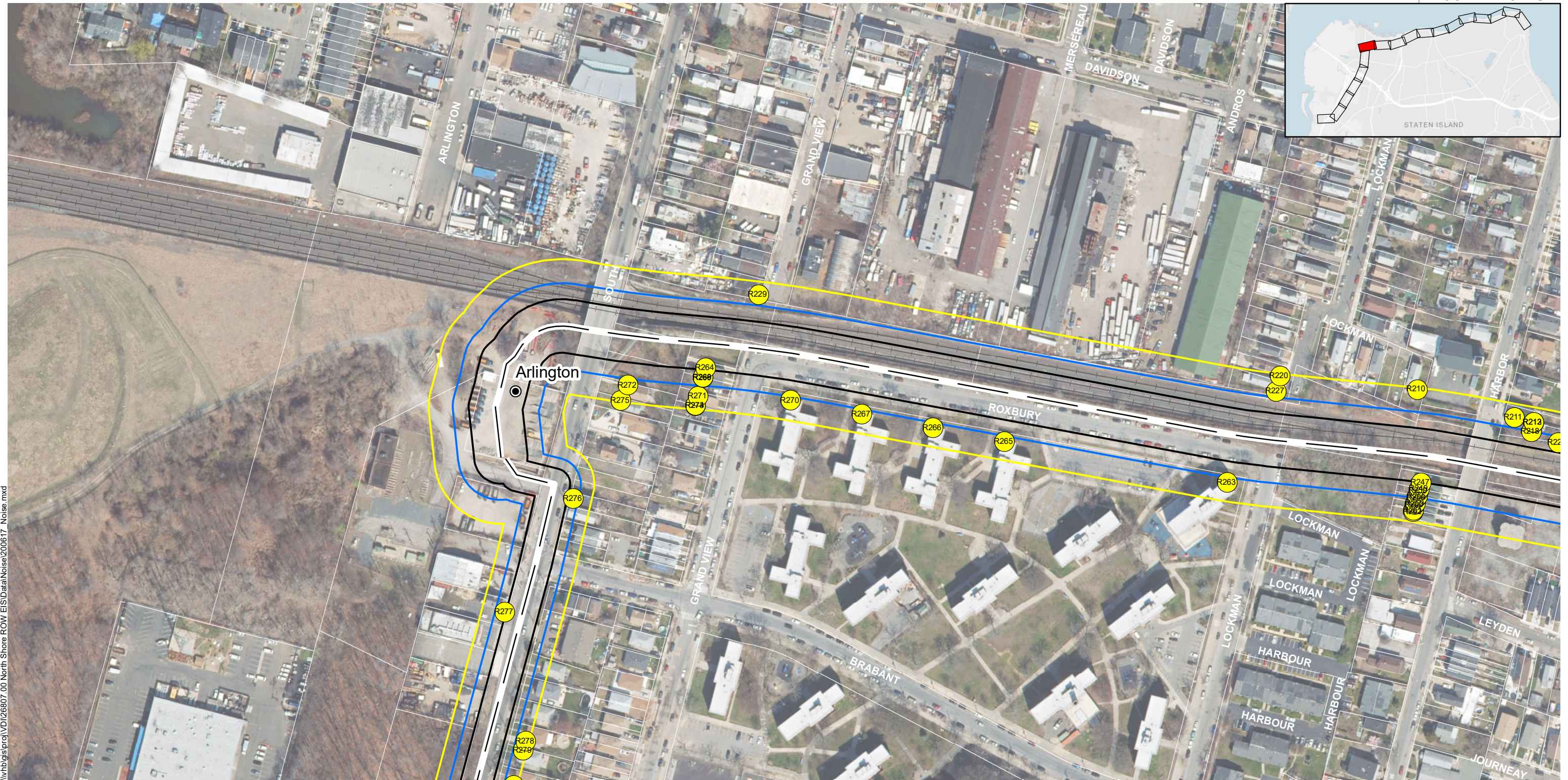
- Construction Noise Impacts (Residential)
 - Construction Noise Impacts (Commercial/Institutional)
 - Construction Noise Impacts (Industrial)
 - Construction Noise Impact Limit for Residential Properties (80 dBA Leq8hr)
 - Construction Noise Impact Limit for Commercial/Institutional Propertites (85 dBA Leq8hr)
 - Construction Noise Impact Limit for Industrial Propertites (90 dBA Leq8hr)
- Station
 - BRT Alignment

Staten Island North Shore BRT | Staten Island, NY

Construction Noise Assessment Map



July 15, 2020

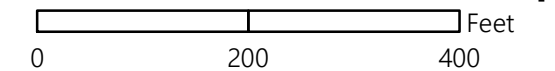


I:\nhg\proj\VD\126807_00_North Shore ROW EIS\Data\Noise\200617_Noise.mxd

- Construction Noise Impacts (Residential)
- Construction Noise Impacts (Commercial/Institutional)
- Construction Noise Impacts (Industrial)
- Construction Noise Impact Limit for Residential Properties (80 dBA Leq8hr)
- Construction Noise Impact Limit for Commercial/Institutional Propertites (85 dBA Leq8hr)
- Construction Noise Impact Limit for Industrial Propertites (90 dBA Leq8hr)
- Station
- BRT Alignment

Staten Island North Shore BRT | Staten Island, NY

Construction Noise Assessment Map



July 15, 2020



I:\nhgis\proj\VD\26807_00 North Shore ROW EIS\Data\Noise\200617 Noise.mxd

- Construction Noise Impacts (Residential)
 - Construction Noise Impacts (Commercial/Institutional)
 - Construction Noise Impacts (Industrial)
 - Construction Noise Impact Limit for Residential Properties (80 dBA Leq8hr)
 - Construction Noise Impact Limit for Commercial/Institutional Propertites (85 dBA Leq8hr)
 - Construction Noise Impact Limit for Industrial Propertites (90 dBA Leq8hr)
- Station
 - BRT Alignment

Staten Island North Shore BRT | Staten Island, NY

Construction Noise Assessment Map



0 200 400 Feet

July 15, 2020

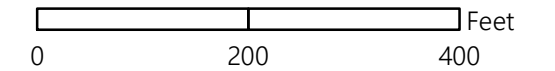


I:\vbgis\proj\VD126807_00 North Shore ROW EIS\Data\Noise\200617 Noise.mxd

- Construction Noise Impacts (Residential)
- Construction Noise Impacts (Commercial/Institutional)
- Construction Noise Impacts (Industrial)
- Construction Noise Impact Limit for Residential Properties (80 dBA Leq8hr)
- Construction Noise Impact Limit for Commercial/Institutional Propertites (85 dBA Leq8hr)
- Construction Noise Impact Limit for Industrial Propertites (90 dBA Leq8hr)
- Station
- BRT Alignment

Staten Island North Shore BRT | Staten Island, NY

Construction Noise Assessment Map



July 15, 2020

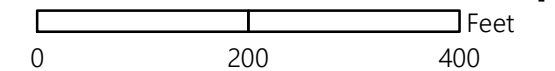


I:\nhgis\proj\VD126807.00 North Shore ROW EIS\Data\Noise\200617 Noise.mxd

- Construction Noise Impacts (Residential)
 - Construction Noise Impacts (Commercial/Institutional)
 - Construction Noise Impacts (Industrial)
 - Construction Noise Impact Limit for Residential Properties (80 dBA Leq8hr)
 - Construction Noise Impact Limit for Commercial/Institutional Propertites (85 dBA Leq8hr)
 - Construction Noise Impact Limit for Industrial Propertites (90 dBA Leq8hr)
- Station
 - BRT Alignment

Staten Island North Shore BRT | Staten Island, NY

Construction Noise Assessment Map



July 15, 2020

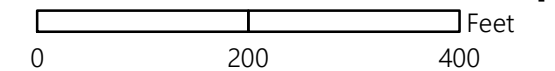


I:\nhgis\proj\VD1268807.00 North Shore ROW EIS\Data\Noise\200617_Noise.mxd

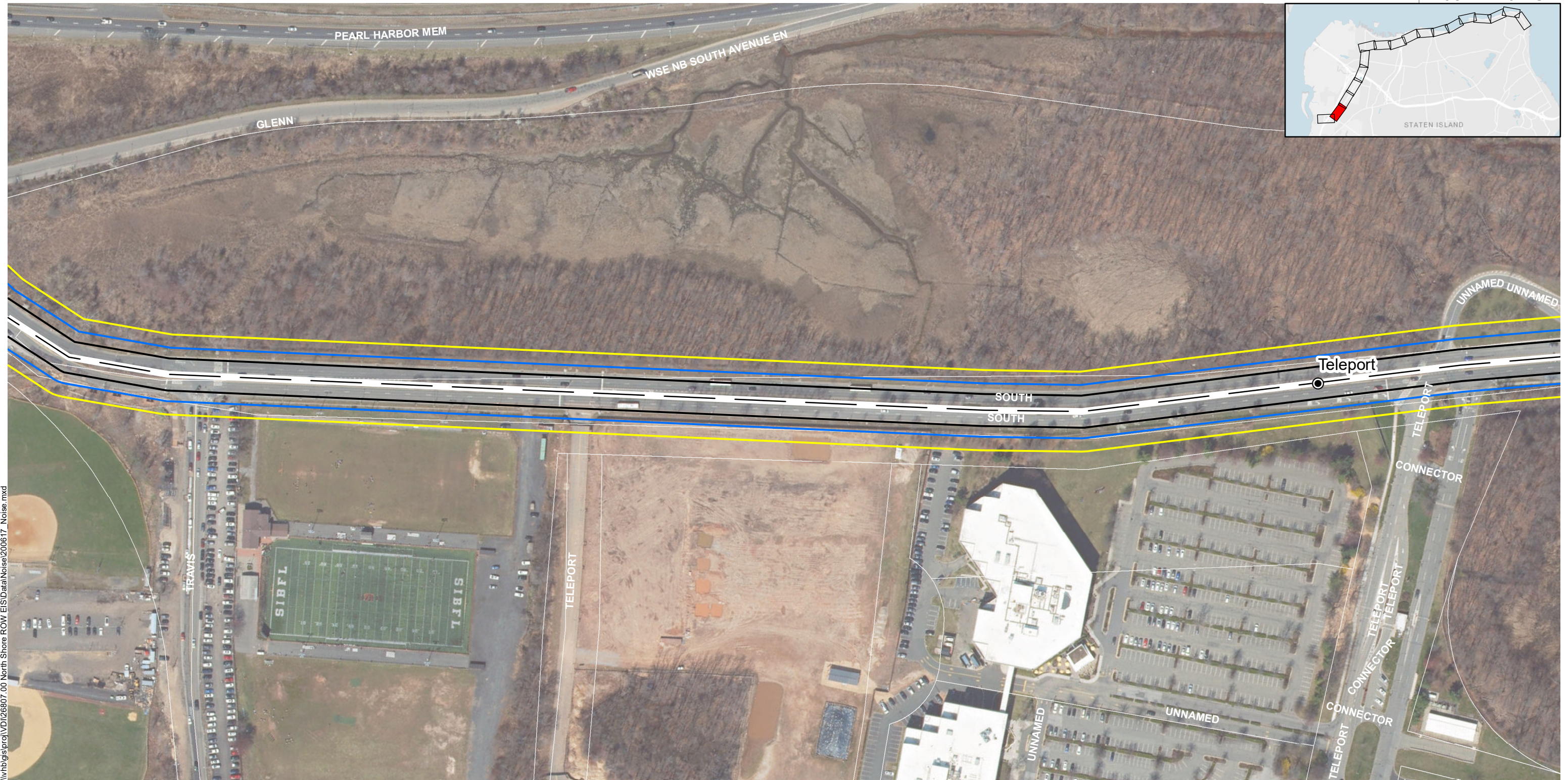
- Construction Noise Impacts (Residential)
- Construction Noise Impacts (Commercial/Institutional)
- Construction Noise Impacts (Industrial)
- Construction Noise Impact Limit for Residential Properties (80 dBA Leq8hr)
- Construction Noise Impact Limit for Commercial/Institutional Propertites (85 dBA Leq8hr)
- Construction Noise Impact Limit for Industrial Propertites (90 dBA Leq8hr)
- Station
- BRT Alignment

Staten Island North Shore BRT | Staten Island, NY

Construction Noise Assessment Map



July 15, 2020

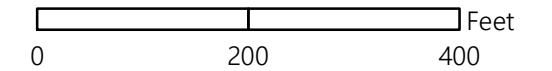


I:\nhgis\proj\VD\126807.00 North Shore ROW EIS\Data\Noise\200617 Noise.mxd

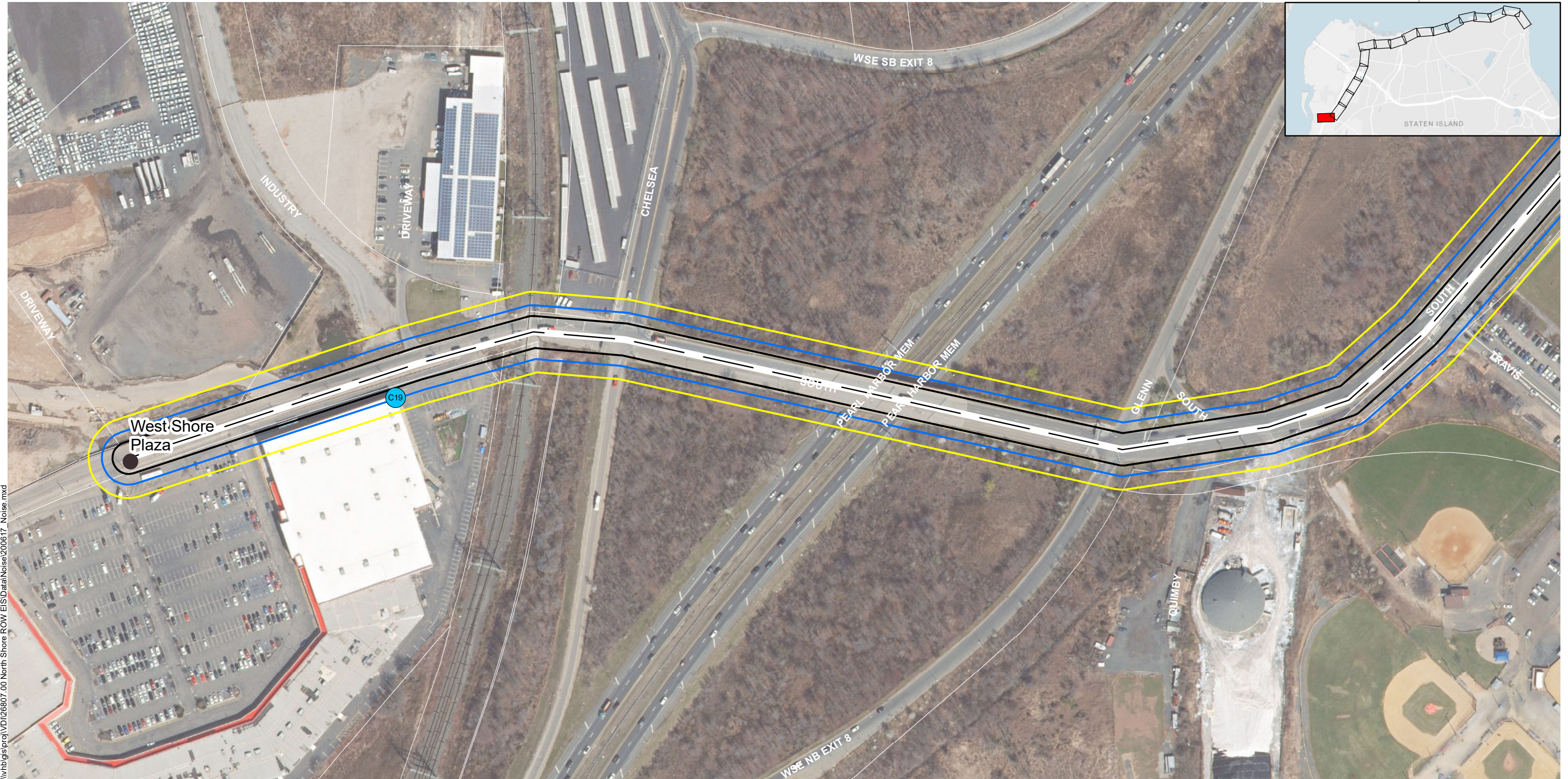
- Construction Noise Impacts (Residential)
 - Construction Noise Impacts (Commercial/Institutional)
 - Construction Noise Impacts (Industrial)
 - Construction Noise Impact Limit for Residential Properties (80 dBA Leq8hr)
 - Construction Noise Impact Limit for Commercial/Institutional Propertites (85 dBA Leq8hr)
 - Construction Noise Impact Limit for Industrial Propertites (90 dBA Leq8hr)
- Station
 - BRT Alignment

Staten Island North Shore BRT | Staten Island, NY

Construction Noise Assessment Map



July 15, 2020

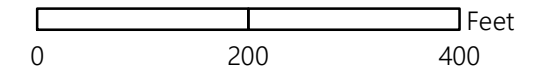


I:\v\hgis\proj\VD\126807.00 North Shore ROW EIS\Data\Noise\200617_Noise.mxd

- Construction Noise Impacts (Residential)
 - Construction Noise Impacts (Commercial/Institutional)
 - Construction Noise Impacts (Industrial)
 - Construction Noise Impact Limit for Residential Properties (80 dBA Leq8hr)
 - Construction Noise Impact Limit for Commercial/Institutional Propertites (85 dBA Leq8hr)
 - Construction Noise Impact Limit for Industrial Propertites (90 dBA Leq8hr)
- Station
 - BRT Alignment

Staten Island North Shore BRT | Staten Island, NY

Construction Noise Assessment Map



July 15, 2020