
Appendix O: Noise

Appendix O-1: Noise Impact Table

Appendix O.1 Operational Noise Impact Assessment

Receptor	Address	Land use Category	Project Segment	Dwelling Units	Noise Level (dBA)			Moderate Impact Criterion	Severe Impact Criterion	Impact	Upper Floors only
					No-Action	With-Action	Increase				
130	68 PORT RICHMOND	2	4	1	57.0	59.7	2.7	2.6	6.2	Moderate	Yes
138	70 PORT RICHMOND	3	4	1	57.0	60.4	3.4	2.6	6.2	Moderate	Yes
149	39 MAPLE AVENUE	2	4	1	59.3	61.6	2.3	2.2	5.3	Moderate	Yes
162	41 MAPLE AVENUE	2	4	6	59.3	63.3	4.0	2.2	5.3	Moderate	Yes
163	56 FABER STREET	2	4	2	59.3	61.5	2.2	2.2	5.3	Moderate	Yes
164	47 FABER STREET	2	4	2	59.3	62.1	2.8	2.2	5.3	Moderate	Yes
165	47 MAPLE AVENUE	2	4	3	59.3	63.8	4.5	2.2	5.3	Moderate	Yes
166	34 HEBERTON AVENUE	2	4	2	57.0	61.8	4.8	2.6	6.2	Moderate	Yes
168	48 MAPLE AVENUE	2	4	1	59.3	63.1	3.8	2.2	5.3	Moderate	Yes
170	56 PARK AVENUE	2	4	1	57.0	67.5	10.5	2.6	6.2	Severe	Yes
172	51 FABER STREET	2	4	2	59.3	62.6	3.3	2.2	5.3	Moderate	Yes
173	1972 RICHMOND TERRACE	2	4	5	57.0	60.7	3.7	2.6	6.2	Moderate	Yes
175	97 ANN STREET	2	4	0	57.0	68.4	11.4	2.6	6.2	Severe	Yes
176	51 MAPLE AVENUE	2	4	3	59.3	67.1	7.8	2.2	5.3	Severe	Yes
180	52 LARKIN STREET	2	4	1	59.3	62.1	2.8	2.2	5.3	Moderate	Yes
182	52 MAPLE AVENUE	2	4	2	59.3	66.0	6.7	2.2	5.3	Severe	Yes
183	103 ANN STREET	2	4	2	57.0	65.6	8.6	2.6	6.2	Severe	Yes
184	60 FABER STREET	2	4	1	59.3	63.3	4.0	2.2	5.3	Moderate	Yes
185	55 FABER STREET	2	4	2	59.3	66.0	6.7	2.2	5.3	Severe	Yes
186	99 ANN STREET	2	4	2	57.0	63.3	6.3	2.6	6.2	Severe	Yes
187	97 ANN STREET	2	4	2	57.0	62.6	5.6	2.6	6.2	Moderate	Yes
188	95 ANN STREET	2	4	2	57.0	62.4	5.4	2.6	6.2	Moderate	Yes
189	34 HEBERTON AVENUE	2	4	2	57.0	59.7	2.7	2.6	6.2	Moderate	Yes
190	55 PARK AVENUE	2	4	1	57.0	60.7	3.7	2.6	6.2	Moderate	Yes
192	39 TREADWELL AVENUE	2	4	1	59.3	61.5	2.2	2.2	5.3	Moderate	Yes
193	49 SHARPE AVENUE	2	4	2	59.3	62.6	3.3	2.2	5.3	Moderate	Yes
195	52 SHARPE AVENUE	2	4	1	59.3	62.3	3.0	2.2	5.3	Moderate	Yes
197	64 FABER STREET	2	4	1	59.3	67.1	7.8	2.2	5.3	Severe	Yes
199	91 ANN STREET	2	4	2	57.0	60.5	3.5	2.6	6.2	Moderate	Yes
200	57 PARK AVENUE	2	4	3	57.0	59.7	2.7	2.6	6.2	Moderate	Yes
205	90 PORT RICHMOND	3	4	1	57.0	61.1	4.1	2.6	6.2	Moderate	Yes
206	56 SHARPE AVENUE	2	4	2	59.3	66.0	6.7	2.2	5.3	Severe	Yes
208	42 TREADWELL AVENUE	2	4	1	59.3	62.2	2.9	2.2	5.3	Moderate	Yes
209	41 TREADWELL AVENUE	2	4	1	59.3	63.6	4.3	2.2	5.3	Moderate	Yes
211	71 FABER STREET	2	4	1	59.3	65.6	6.3	2.2	5.3	Severe	Yes
215	36 PORT LANE	2	4	2	59.3	61.7	2.4	2.2	5.3	Moderate	Yes
216	41 TREADWELL AVENUE	2	4	1	59.3	67.8	8.5	2.2	5.3	Severe	Yes

Receptor	Address	Land use Category	Project Segment	Dwelling Units	Noise Level (dBA)			Moderate Impact Criterion	Severe Impact Criterion	Impact	Upper Floors only
					No-Action	With-Action	Increase				
220	78 FABER STREET	2	4	5	59.3	65.6	6.3	2.2	5.3	Severe	Yes
221	66 MAPLE AVENUE	2	4	2	59.3	62.8	3.5	2.2	5.3	Moderate	Yes
224	46 TREADWELL AVENUE	2	4	1	59.3	65.6	6.3	2.2	5.3	Severe	Yes
227	59 GROVE AVENUE	2	4	5	59.3	62.6	3.3	2.2	5.3	Moderate	Yes
230	68 SHARPE AVENUE	2	4	2	59.3	65.2	5.9	2.2	5.3	Severe	Yes
231	78 FABER STREET	2	4	5	59.3	61.9	2.6	2.2	5.3	Moderate	Yes
234	61 TREADWELL AVENUE	2	4	1	59.3	67.8	8.5	2.2	5.3	Severe	Yes
242	63 TREADWELL AVENUE	2	4	2	59.3	63.6	4.3	2.2	5.3	Moderate	Yes
244	100 GROVE AVENUE	2	4	2	59.3	61.6	2.3	2.2	5.3	Moderate	Yes
247	62 TREADWELL AVENUE	2	4	2	59.3	66.5	7.2	2.2	5.3	Severe	Yes
250	51 NICHOLAS AVENUE	2	4	1	59.3	62.3	3.0	2.2	5.3	Moderate	Yes
251	72 SHARPE AVENUE	2	4	2	59.3	61.7	2.4	2.2	5.3	Moderate	Yes
255	65 TREADWELL AVENUE	2	4	2	59.3	62.2	2.9	2.2	5.3	Moderate	Yes
256	62 TREADWELL AVENUE	2	4	2	59.3	64.6	5.3	2.2	5.3	Severe	Yes
262	51 NICHOLAS AVENUE	2	4	1	59.3	63.0	3.7	2.2	5.3	Moderate	Yes
263	66 TREADWELL AVENUE	2	4	2	59.3	63.0	3.7	2.2	5.3	Moderate	Yes
277	60 NICHOLAS AVENUE	2	4	2	56.8	60.5	3.7	2.7	6.3	Moderate	No
283	31 SLAIGHT STREET	2	4	44	59.3	61.9	2.6	2.2	5.3	Moderate	Yes
292	26 RIVERSIDE LANE	2	4	2	56.8	61.8	5.0	2.7	6.3	Moderate	No
300	28 RIVERSIDE LANE	2	4	2	56.8	61.9	5.1	2.7	6.3	Moderate	No
305	30 RIVERSIDE LANE	2	4	2	56.8	62.1	5.3	2.7	6.3	Moderate	No
309	34 RIVERSIDE LANE	2	4	2	56.8	62.3	5.5	2.7	6.3	Moderate	No
310	32 RIVERSIDE LANE	2	4	2	56.8	62.3	5.5	2.7	6.3	Moderate	No
315	31 SLAIGHT STREET	2	4	44	56.8	60.6	3.8	2.7	6.3	Moderate	No
316	36 RIVERSIDE LANE	2	4	2	56.8	62.3	5.5	2.7	6.3	Moderate	No
319	38 RIVERSIDE LANE	2	4	2	56.8	62.3	5.5	2.7	6.3	Moderate	No
322	40 RIVERSIDE LANE	2	4	2	56.8	62.1	5.3	2.7	6.3	Moderate	No
324	42 RIVERSIDE LANE	2	4	2	56.8	62.1	5.3	2.7	6.3	Moderate	No
325	44 RIVERSIDE LANE	2	4	2	56.8	61.9	5.1	2.7	6.3	Moderate	No
327	46 RIVERSIDE LANE	2	4	2	56.8	61.8	5.0	2.7	6.3	Moderate	No
330	48 RIVERSIDE LANE	2	4	2	56.8	61.9	5.1	2.7	6.3	Moderate	No
332	50 RIVERSIDE LANE	2	4	2	56.8	61.8	5.0	2.7	6.3	Moderate	No
338	52 RIVERSIDE LANE	2	4	2	56.8	61.6	4.8	2.7	6.3	Moderate	No
342	54 RIVERSIDE LANE	2	4	2	56.8	61.6	4.8	2.7	6.3	Moderate	No
345	56 RIVERSIDE LANE	2	4	2	56.8	61.3	4.5	2.7	6.3	Moderate	No
352	58 RIVERSIDE LANE	2	4	2	56.8	61.4	4.6	2.7	6.3	Moderate	No
372	83 JOHN STREET	2	4	3	56.8	59.7	2.9	2.7	6.3	Moderate	No
375	87 JOHN STREET	2	4	2	56.8	61.6	4.8	2.7	6.3	Moderate	No
381	94 JOHN STREET	2	4	2	58.3	60.8	2.5	2.4	5.7	Moderate	No

Receptor	Address	Land use Category	Project Segment	Dwelling Units	Noise Level (dBA)						Upper Floors only
					No-Action	With-Action	Increase	Moderate Impact Criterion	Severe Impact Criterion	Impact	
386	73 NEWARK AVENUE	2	4	1	58.3	60.7	2.4	2.4	5.7	Moderate	No
387	73 NEWARK AVENUE	2	4	1	58.3	60.9	2.6	2.4	5.7	Moderate	No
389	115 JOHN STREET	2	4	2	58.3	62.4	4.1	2.4	5.7	Moderate	No
391	81 NEWARK AVENUE	2	4	2	58.3	62.0	3.7	2.4	5.7	Moderate	No
392	85 NEWARK AVENUE	2	4	2	58.3	62.9	4.6	2.4	5.7	Moderate	No
393	117 JOHN STREET	2	4	2	58.3	60.9	2.6	2.4	5.7	Moderate	No
394	120 JOHN STREET	2	4	1	58.3	64.3	6.0	2.4	5.7	Severe	No
424	15 SHAINA COURT	2	5	1	58.3	61.0	2.7	2.4	5.7	Moderate	Yes
426	17 SHAINA COURT	2	5	1	58.3	61.6	3.3	2.4	5.7	Moderate	Yes
430	19 SHAINA COURT	2	5	1	58.3	62.4	4.1	2.4	5.7	Moderate	No
433	21 SHAINA COURT	2	5	1	58.3	63.0	4.7	2.4	5.7	Moderate	No
436	23 SHAINA COURT	2	5	1	58.3	62.5	4.2	2.4	5.7	Moderate	No
439	25 SHAINA COURT	2	5	1	58.3	62.5	4.2	2.4	5.7	Moderate	No
443	31 SHAINA COURT	2	5	1	58.3	62.5	4.2	2.4	5.7	Moderate	No
445	31 SHAINA COURT	2	5	1	58.3	62.5	4.2	2.4	5.7	Moderate	No
447	127 MORNINGSTAR ROAD	2	5	3	58.3	64.0	5.7	2.4	5.7	Severe	No
448	111 WINANT STREET	2	5	1	58.3	60.7	2.4	2.4	5.7	Moderate	Yes
460	140 MORNINGSTAR ROAD	2	5	1	58.3	61.0	2.7	2.4	5.7	Moderate	Yes
470	146 MORNINGSTAR ROAD	3	5	0	58.3	62.2	3.9	2.4	5.7	Moderate	Yes
472	142 MORNINGSTAR ROAD	2	5	1	58.3	60.7	2.4	2.4	5.7	Moderate	Yes
525	102 LAKE AVENUE	2	5	1	58.0	60.4	2.4	2.4	5.8	Moderate	Yes
528	81 VAN PELT AVENUE	2	5	1	51.3	55.8	4.5	4.4	9.2	Moderate	Yes
534	20 BEAMER COURT	2	5	2	51.3	56.5	5.2	4.4	9.2	Moderate	Yes
538	104 LAKE AVENUE	2	5	1	58.0	60.9	2.9	2.4	5.8	Moderate	Yes
541	97 LAKE AVENUE	2	5	2	58.0	61.4	3.4	2.4	5.8	Moderate	Yes
542	89 VAN PELT AVENUE	2	5	1	51.3	56.3	5.0	4.4	9.2	Moderate	Yes
544	85 ERASTINA PLACE	2	5	1	51.3	55.8	4.5	4.4	9.2	Moderate	Yes
545	40 BEAMER COURT	2	5	2	51.3	56.9	5.6	4.4	9.2	Moderate	Yes
546	104 LAKE AVENUE	2	5	1	58.0	61.6	3.6	2.4	5.8	Moderate	Yes
547	97 SIMONSON AVENUE	2	5	2	58.0	61.4	3.4	2.4	5.8	Moderate	Yes
549	92 VAN PELT AVENUE	2	5	1	51.3	56.2	4.9	4.4	9.2	Moderate	Yes
550	99 VAN NAME AVENUE	2	5	1	58.0	60.9	2.9	2.4	5.8	Moderate	Yes
553	97 LAKE AVENUE	2	5	2	58.0	62.6	4.6	2.4	5.8	Moderate	No
557	98 SIMONSON AVENUE	2	5	1	58.0	61.7	3.7	2.4	5.8	Moderate	Yes
566	92 VAN PELT AVENUE	2	5	1	51.3	57.6	6.3	4.4	9.2	Moderate	Yes
569	50 BEAMER COURT	2	5	2	51.3	59.1	7.8	4.4	9.2	Moderate	Yes
572	92 VAN PELT AVENUE	2	5	1	58.0	61.2	3.2	2.4	5.8	Moderate	Yes
576	89 ERASTINA PLACE	2	5	1	51.3	58.8	7.5	4.4	9.2	Moderate	Yes
579	103 BUSH AVENUE	2	5	2	51.3	56.2	4.9	4.4	9.2	Moderate	Yes

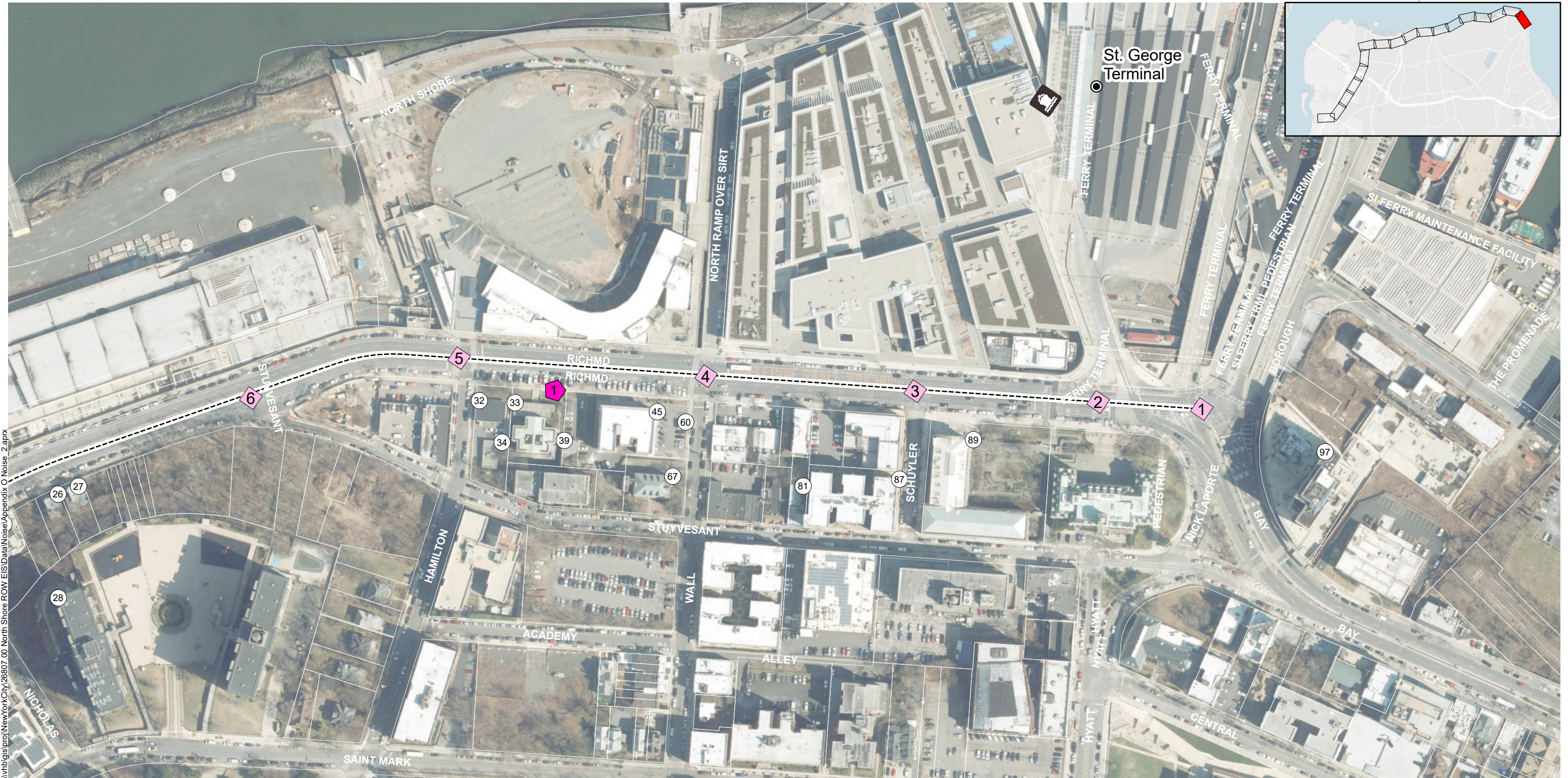
Receptor	Address	Land use Category	Project Segment	Dwelling Units	Noise Level (dBA)			Moderate Impact Criterion	Severe Impact Criterion	Impact	Upper Floors only
					No-Action	With-Action	Increase				
581	103 HARBOR ROAD	2	5	2	51.3	55.8	4.5	4.4	9.2	Moderate	Yes
582	98 BUSH AVENUE	2	5	2	51.3	56.1	4.8	4.4	9.2	Moderate	Yes
584	95 DE HART AVENUE	2	5	1	58.0	60.7	2.7	2.4	5.8	Moderate	Yes
590	104 UNION AVENUE	2	5	4	58.0	60.5	2.5	2.4	5.8	Moderate	Yes
591	109 BUSH AVENUE	2	5	2	51.3	57.2	5.9	4.4	9.2	Moderate	Yes
592	7 LOCKMAN PLACE	2	5	2	51.3	56.1	4.8	4.4	9.2	Moderate	Yes
595	109 HARBOR ROAD	2	5	2	51.3	57.1	5.8	4.4	9.2	Moderate	Yes
598	112 BUSH AVENUE	2	5	1	51.3	58.1	6.8	4.4	9.2	Moderate	Yes
599	111 BUSH AVENUE	2	5	2	51.3	58.8	7.5	4.4	9.2	Moderate	Yes
600	111 HARBOR ROAD	2	5	2	51.3	58.1	6.8	4.4	9.2	Moderate	Yes
601	120 LAKE AVENUE	2	5	2	58.0	62.1	4.1	2.4	5.8	Moderate	No
602	132 LOCKMAN AVENUE	2	5	2	51.3	56.1	4.8	4.4	9.2	Moderate	Yes
603	111 HARBOR ROAD	2	5	2	51.3	59.0	7.7	4.4	9.2	Moderate	Yes
604	126 SIMONSON AVENUE	3	5	2	58.0	61.8	3.8	2.4	5.8	Moderate	Yes
606	17 HEUSDEN STREET	2	5	1	58.0	61.8	3.8	2.4	5.8	Moderate	Yes
608	119 SIMONSON AVENUE	2	5	2	58.0	61.3	3.3	2.4	5.8	Moderate	Yes
610	19 HEUSDEN STREET	2	5	1	58.0	61.7	3.7	2.4	5.8	Moderate	Yes
611	120 LAKE AVENUE	2	5	2	58.0	61.0	3.0	2.4	5.8	Moderate	Yes
612	19 HEUSDEN STREET	2	5	1	58.0	61.7	3.7	2.4	5.8	Moderate	Yes
613	134 LOCKMAN AVENUE	2	5	2	51.3	57.4	6.1	4.4	9.2	Moderate	Yes
614	119 SIMONSON AVENUE	2	5	2	58.0	60.7	2.7	2.4	5.8	Moderate	Yes
615	17 HEUSDEN STREET	2	5	1	58.0	60.6	2.6	2.4	5.8	Moderate	Yes
622	58 HEUSDEN STREET	2	5	1	51.3	56.6	5.3	4.4	9.2	Moderate	Yes
624	54 HEUSDEN STREET	2	5	1	51.3	56.3	5.0	4.4	9.2	Moderate	Yes
625	56 HEUSDEN STREET	2	5	1	51.3	56.3	5.0	4.4	9.2	Moderate	Yes
627	52 HEUSDEN STREET	2	5	1	51.3	56.2	4.9	4.4	9.2	Moderate	Yes
628	112 DE HART AVENUE	2	5	2	58.0	61.9	3.9	2.4	5.8	Moderate	Yes
629	18 LINDEN AVENUE	3	5	0	51.3	57.4	6.1	4.4	9.2	Moderate	Yes
630	50 HEUSDEN STREET	2	5	1	51.3	56.0	4.7	4.4	9.2	Moderate	Yes
631	46 HEUSDEN STREET	2	5	1	51.3	55.9	4.6	4.4	9.2	Moderate	Yes
632	18 LINDEN AVENUE	3	5	0	58.0	60.6	2.6	2.4	5.8	Moderate	Yes
633	66 HEUSDEN STREET	2	5	1	51.3	56.3	5.0	4.4	9.2	Moderate	Yes
635	46 HEUSDEN STREET	2	5	1	51.3	55.8	4.5	4.4	9.2	Moderate	Yes
640	119 UNION AVENUE	2	5	2	58.0	61.2	3.2	2.4	5.8	Moderate	Yes
642	116 DE HART AVENUE	2	5	2	58.0	60.9	2.9	2.4	5.8	Moderate	Yes
649	124 HARBOR ROAD	2	5	1	51.3	61.0	9.7	4.4	9.2	Severe	No
651	121 UNION AVENUE	2	5	2	58.0	60.5	2.5	2.4	5.8	Moderate	Yes
654	126 HARBOR ROAD	2	5	1	51.3	59.3	8.0	4.4	9.2	Moderate	Yes
659	128 HARBOR ROAD	2	5	1	51.3	58.4	7.1	4.4	9.2	Moderate	Yes

Receptor	Address	Land use Category	Project Segment	Dwelling Units	Noise Level (dBA)			Moderate Impact Criterion	Severe Impact Criterion	Impact	Upper Floors only
					No-Action	With-Action	Increase				
667	130 HARBOR ROAD	2	5	1	51.3	57.5	6.2	4.4	9.2	Moderate	Yes
673	132 HARBOR ROAD	2	5	1	51.3	56.8	5.5	4.4	9.2	Moderate	Yes
683	311 GRANDVIEW AVENUE	2	5	6	51.3	57.6	6.3	4.4	9.2	Moderate	Yes
693	311 GRANDVIEW AVENUE	2	5	6	51.3	57.6	6.3	4.4	9.2	Moderate	Yes
695	311 GRANDVIEW AVENUE	2	5	6	51.3	57.7	6.4	4.4	9.2	Moderate	Yes
698	311 GRANDVIEW AVENUE	2	5	6	51.3	57.8	6.5	4.4	9.2	Moderate	Yes
702	130 HARBOR ROAD	2	5	1	57.0	59.7	6.2	4.4	9.2	Moderate	Yes

Source: VHB 2023.

All receptors are Land Use Category 2 (residential)

Appendix O-2: Operational Noise Figures

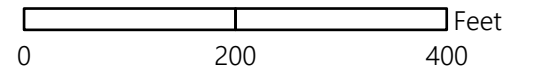


I:\v\bigis\proj\NewYorkCity\26807.00 North Shore ROW EIS\Data\Noise\Appendix C Noise_2.aprx

- Severe Impact (Ground Level & Upper Floors)
- Severe Impact (Upper Floors) & Moderate Impact (Ground Level)
- Severe Impact (Upper Floors) & No Impact (Ground Level)
- Moderate Impact (Ground Level & Upper Floors)
- Moderate Impact (Upper Floors)
- No Impact
- Study Area Intersection
- ◆ Noise Measurement Site
- Station
- BRT Alignment

Staten Island North Shore BRT | Staten Island, NY

Noise Assessment Map



July 7, 2023



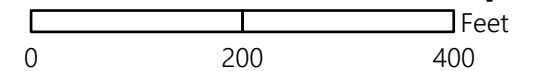


I:\nbgis\proj\NewYorkCity\26807_00_North Shore ROW\GISData\Noise\Appendix O Noise_2.aprx

- Severe Impact (Ground Level & Upper Floors)
- Severe Impact (Upper Floors) & Moderate Impact (Ground Level)
- Severe Impact (Upper Floors) & No Impact (Ground Level)
- Moderate Impact (Ground Level & Upper Floors)
- Moderate Impact (Upper Floors)
- No Impact
- Study Area Intersection
- Noise Measurement Site
- Station
- BRT Alignment

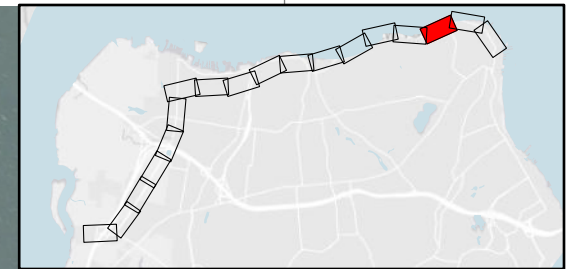
Staten Island North Shore BRT | Staten Island, NY

Noise Assessment Map



July 7, 2023





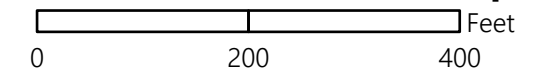
I:\nbg\is\proj\NewYorkCity\26807_00_North Shore ROW\GISData\Noise\Appendix C Noise_2.aprx

- | | |
|--|--|
| ● Severe Impact (Ground Level & Upper Floors) | Study Area Intersection |
| ● Severe Impact (Upper Floors) & Moderate Impact (Ground Level) | ◆ Noise Measurement Site |
| ● Severe Impact (Upper Floors) & No Impact (Ground Level) | Station |
| ● Moderate Impact (Ground Level & Upper Floors) | ----- BRT Alignment |
| ● Moderate Impact (Upper Floors) | |
| No Impact | |

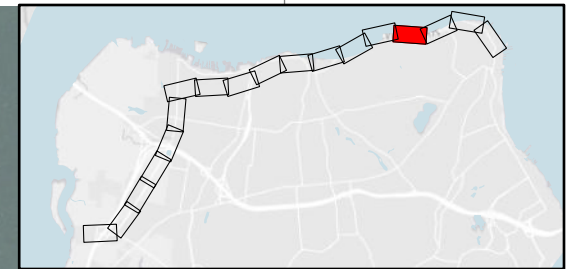
Staten Island North Shore BRT | Staten Island, NY



Noise Assessment Map



July 7, 2023



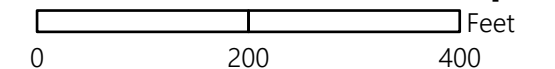
I:\bigs\proj\NewYorkCity\26807.00 North Shore ROW EIS\Data\Noise\Appendix O Noise_2.aprx

- | | |
|--|--|
| ● Severe Impact (Ground Level & Upper Floors) | Study Area Intersection |
| ● Severe Impact (Upper Floors) & Moderate Impact (Ground Level) | ⬠ Noise Measurement Site |
| ● Severe Impact (Upper Floors) & No Impact (Ground Level) | Station |
| ● Moderate Impact (Ground Level & Upper Floors) | ----- BRT Alignment |
| ● Moderate Impact (Upper Floors) | |
| No Impact | |

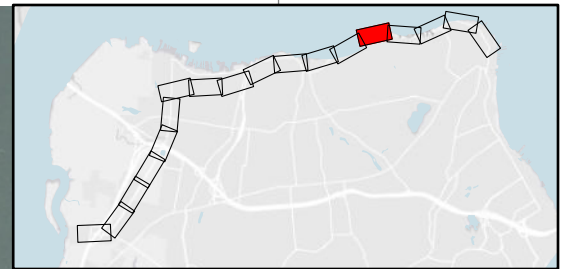
Staten Island North Shore BRT | Staten Island, NY



Noise Assessment Map



July 7, 2023

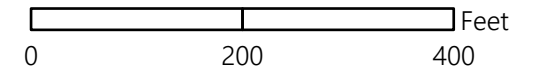


I:\nbgis\proj\NewYorkCity\26807_00_North Shore ROW EIS\Data\Noise\Appendix C Noise_2.aprx

- Severe Impact (Ground Level & Upper Floors)
- Severe Impact (Upper Floors) & Moderate Impact (Ground Level)
- Severe Impact (Upper Floors) & No Impact (Ground Level)
- Moderate Impact (Ground Level & Upper Floors)
- Moderate Impact (Upper Floors)
- No Impact
- Study Area Intersection
- ⬠ Noise Measurement Site
- Station
- BRT Alignment

Staten Island North Shore BRT | Staten Island, NY

Noise Assessment Map



July 7, 2023



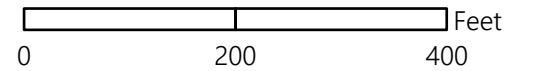


I:\nbgis\proj\NewYorkCity\26807.00 North Shore ROW\GISData\Noise\Appendix C Noise_2.aprx

- Severe Impact (Ground Level & Upper Floors)
- Severe Impact (Upper Floors) & Moderate Impact (Ground Level)
- Severe Impact (Upper Floors) & No Impact (Ground Level)
- Moderate Impact (Ground Level & Upper Floors)
- Moderate Impact (Upper Floors)
- No Impact
- Study Area Intersection
- ◆ Noise Measurement Site
- Station
- BRT Alignment

Staten Island North Shore BRT | Staten Island, NY

Noise Assessment Map



July 7, 2023



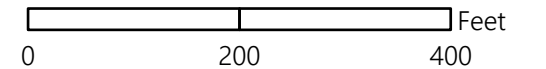


I:\v\b\gis\proj\NewYorkCity\26807_00_North Shore ROW EIS\Data\Noise\Appendix C Noise_2.aprx

- | | |
|---|---|
| ● Severe Impact (Ground Level & Upper Floors) | Study Area Intersection |
| ● Severe Impact (Upper Floors) & Moderate Impact (Ground Level) | ⬠ Noise Measurement Site |
| ● Severe Impact (Upper Floors) & No Impact (Ground Level) | ● Station |
| ● Moderate Impact (Ground Level & Upper Floors) | ----- BRT Alignment |
| ● Moderate Impact (Upper Floors) | |
| ○ No Impact | |

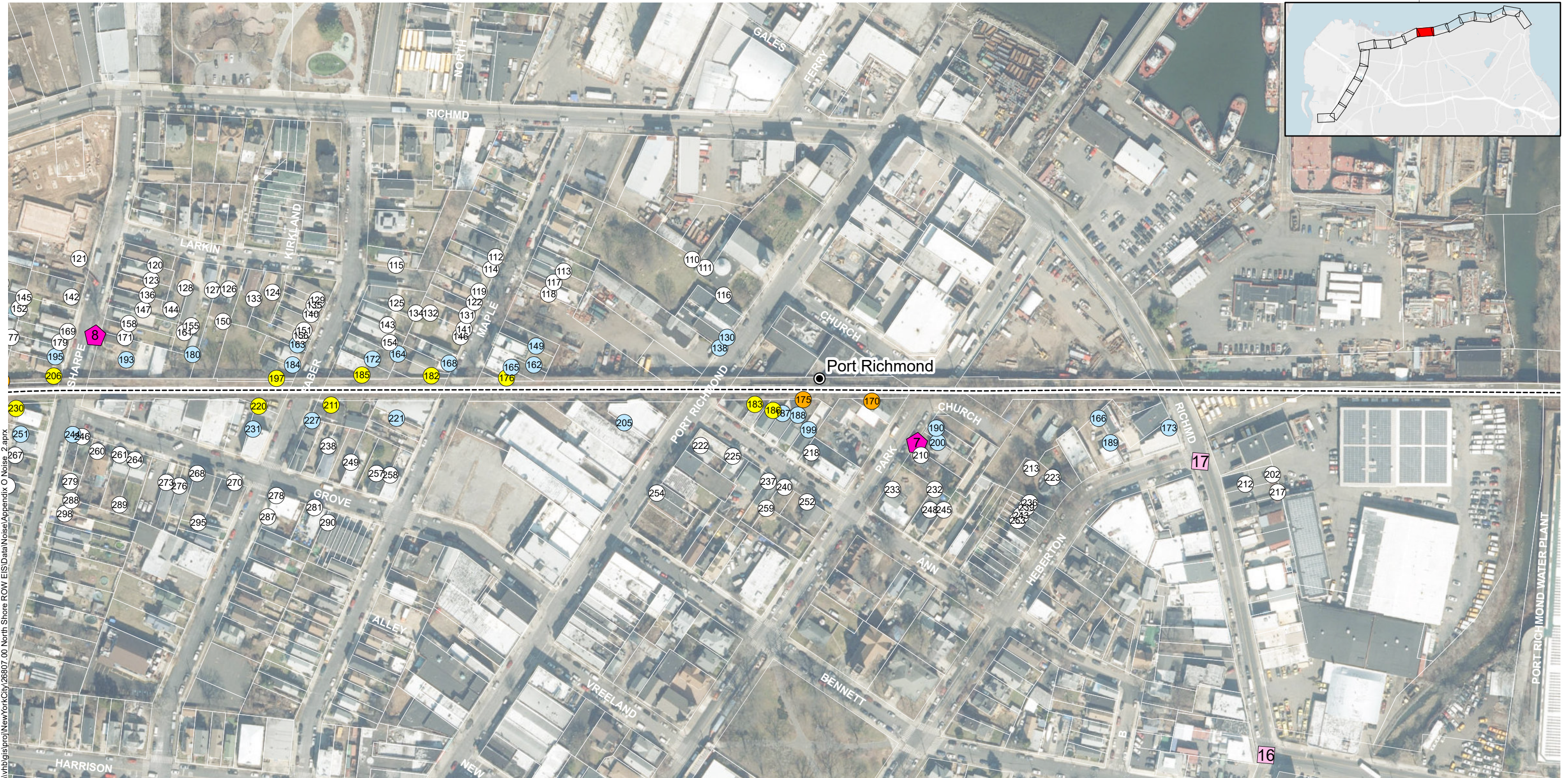
Staten Island North Shore BRT | Staten Island, NY

Noise Assessment Map



July 7, 2023



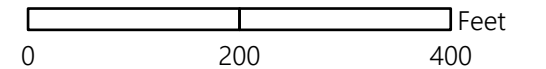


\\vbigis\proj\NewYorkCity\26807.00 North Shore ROW\GISData\Noise\Appendix C Noise_2.aprx

- | | |
|---|---|
| ● Severe Impact (Ground Level & Upper Floors) | Study Area Intersection |
| ● Severe Impact (Upper Floors) & Moderate Impact (Ground Level) | ⬠ Noise Measurement Site |
| ● Severe Impact (Upper Floors) & No Impact (Ground Level) | ● Station |
| ● Moderate Impact (Ground Level & Upper Floors) | ----- BRT Alignment |
| ● Moderate Impact (Upper Floors) | |
| No Impact | |

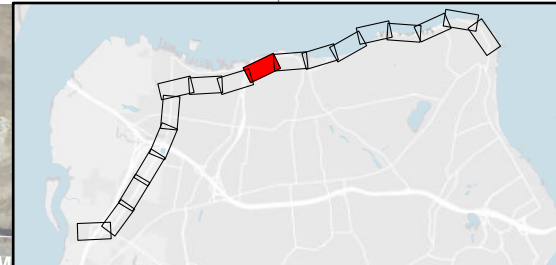
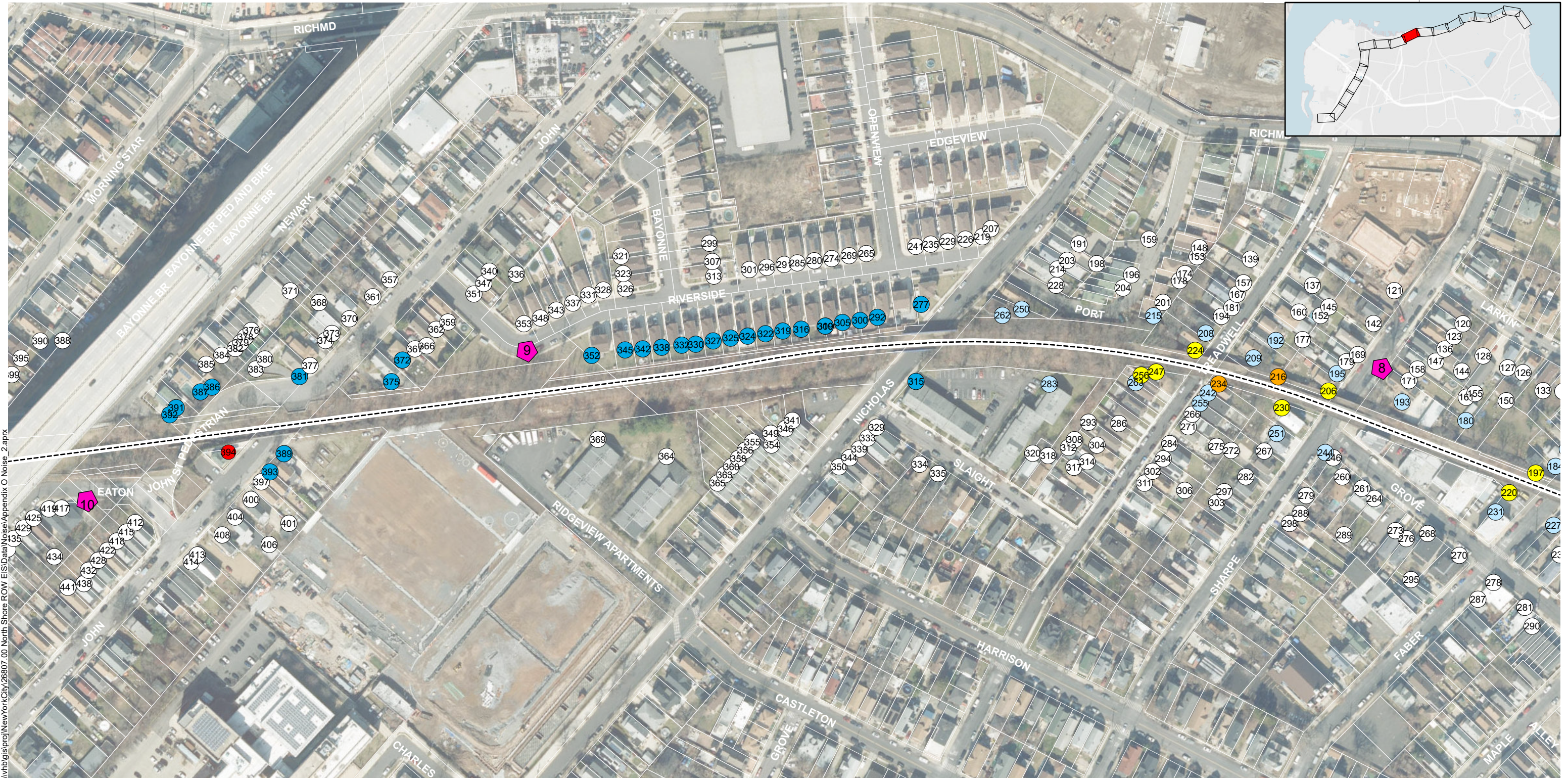
Staten Island North Shore BRT | Staten Island, NY

Noise Assessment Map



July 7, 2023



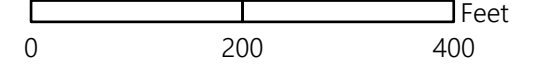


I:\nbgis\proj\NewYork\City\26607_00_North Shore ROW EIS\Data\Noise\Appendix C Noise_2.aprx

- Severe Impact (Ground Level & Upper Floors)
- Severe Impact (Upper Floors) & Moderate Impact (Ground Level)
- Severe Impact (Upper Floors) & No Impact (Ground Level)
- Moderate Impact (Ground Level & Upper Floors)
- Moderate Impact (Upper Floors)
- No Impact
- Study Area Intersection
- ⬠ Noise Measurement Site
- Station
- BRT Alignment

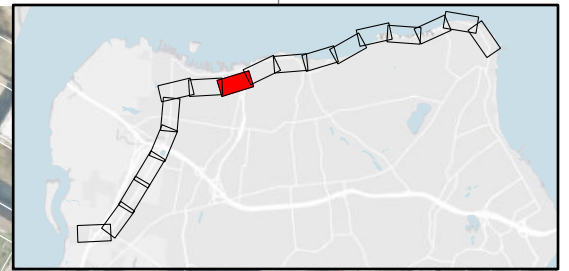
Staten Island North Shore BRT | Staten Island, NY

Noise Assessment Map



July 7, 2023



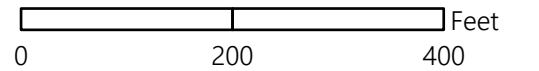


I:\nbgis\proj\NewYork\City\26807_00_North Shore ROW\GISData\Noise\Appendix C Noise_2.aprx

- Severe Impact (Ground Level & Upper Floors)
- Severe Impact (Upper Floors) & Moderate Impact (Ground Level)
- Severe Impact (Upper Floors) & No Impact (Ground Level)
- Moderate Impact (Ground Level & Upper Floors)
- Moderate Impact (Upper Floors)
- No Impact
- Study Area Intersection
- ⬠ Noise Measurement Site
- Station
- BRT Alignment

Staten Island North Shore BRT | Staten Island, NY

Noise Assessment Map



July 7, 2023



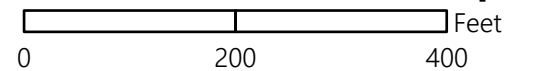


I:\nbg\is\proj\NewYorkCity\28807.00 North Shore ROW\GISData\Noise\Appendix C Noise 2.aprx

- Severe Impact (Ground Level & Upper Floors)
- Severe Impact (Upper Floors) & Moderate Impact (Ground Level)
- Severe Impact (Upper Floors) & No Impact (Ground Level)
- Moderate Impact (Ground Level & Upper Floors)
- Moderate Impact (Upper Floors)
- No Impact
- Study Area Intersection
- ◆ Noise Measurement Site
- Station
- BRT Alignment

Staten Island North Shore BRT | Staten Island, NY

Noise Assessment Map



July 7, 2023



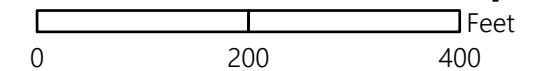
I:\nbg\is\proj\NewYorkCity\26807.00 North Shore ROW EIS\Data\Noise\Appendix O Noise_2.aprx

- Severe Impact (Ground Level & Upper Floors)
- Severe Impact (Upper Floors) & Moderate Impact (Ground Level)
- Severe Impact (Upper Floors) & No Impact (Ground Level)
- Moderate Impact (Ground Level & Upper Floors)
- Moderate Impact (Upper Floors)
- No Impact
- Study Area Intersection
- ⬠ Noise Measurement Site
- Station
- BRT Alignment

Staten Island North Shore BRT | Staten Island, NY



Noise Assessment Map



July 7, 2023



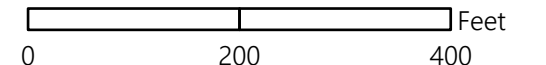
I:\nbgis\proj\NewYorkCity\26807.00_North Shore ROW EIS\Data\Noise\Appendix C Noise_2.aprx

- Severe Impact (Ground Level & Upper Floors)
- Severe Impact (Upper Floors) & Moderate Impact (Ground Level)
- Severe Impact (Upper Floors) & No Impact (Ground Level)
- Moderate Impact (Ground Level & Upper Floors)
- Moderate Impact (Upper Floors)
- No Impact
- Study Area Intersection
- ◆ Noise Measurement Site
- Station
- BRT Alignment

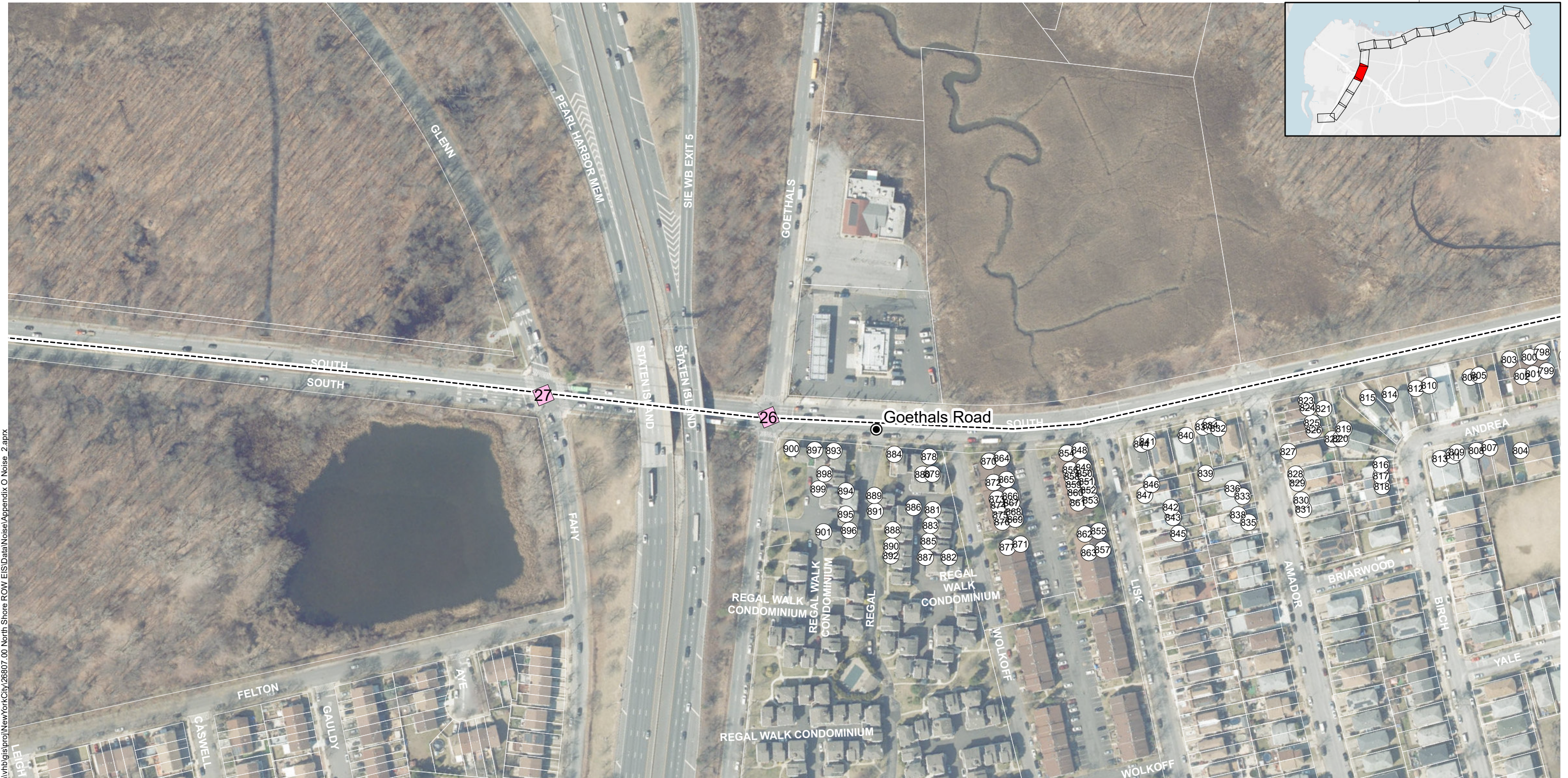
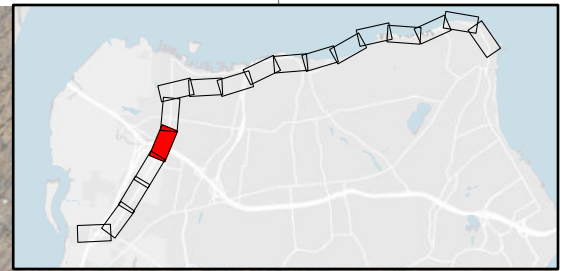
Staten Island North Shore BRT | Staten Island, NY



Noise Assessment Map



July 7, 2023



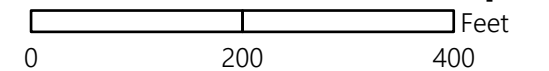
I:\nb\gis\proj\NewYorkCity\26807.00 North Shore ROW EIS\Data\Noise\Appendix C Noise 2.aprx

- Severe Impact (Ground Level & Upper Floors)
- Severe Impact (Upper Floors) & Moderate Impact (Ground Level)
- Severe Impact (Upper Floors) & No Impact (Ground Level)
- Moderate Impact (Ground Level & Upper Floors)
- Moderate Impact (Upper Floors)
- No Impact
- Study Area Intersection
- ◆ Noise Measurement Site
- Station
- BRT Alignment

Staten Island North Shore BRT | Staten Island, NY



Noise Assessment Map



July 7, 2023



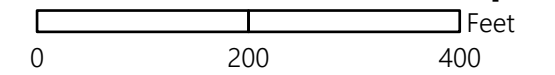
\\nbgis\proj\NewYorkCity\26807.00 North Shore ROW\GISData\Noise\Appendix O Noise_2.aprx

- Severe Impact (Ground Level & Upper Floors)
 - Severe Impact (Upper Floors) & Moderate Impact (Ground Level)
 - Severe Impact (Upper Floors) & No Impact (Ground Level)
 - Moderate Impact (Ground Level & Upper Floors)
 - Moderate Impact (Upper Floors)
 - No Impact
- Study Area Intersection
 - ◆ Noise Measurement Site
 - Station
 - BRT Alignment

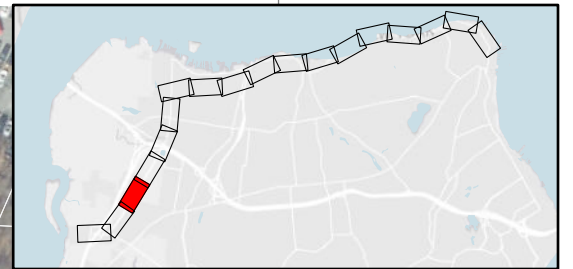
Staten Island North Shore BRT | Staten Island, NY



Noise Assessment Map



July 7, 2023



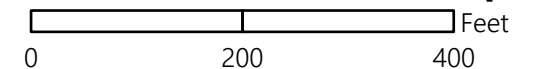
I:\nbigis\proj\NewYorkCity\26807.00 North Shore ROW EIS\Data\Noise\Appendix O Noise_2.aprx

- | | |
|--|--|
| ● Severe Impact (Ground Level & Upper Floors) | Study Area Intersection |
| ● Severe Impact (Upper Floors) & Moderate Impact (Ground Level) | ⬠ Noise Measurement Site |
| ● Severe Impact (Upper Floors) & No Impact (Ground Level) | Station |
| ● Moderate Impact (Ground Level & Upper Floors) | ----- BRT Alignment |
| ● Moderate Impact (Upper Floors) | |
| No Impact | |

Staten Island North Shore BRT | Staten Island, NY



Noise Assessment Map



July 7, 2023

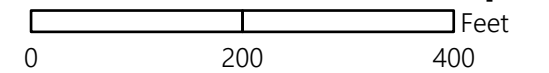


I:\nbg\is\proj\NewYorkCity\26807.00 North Shore ROW EIS\Data\Noise\Appendix C Noise_2.aprx

- | | |
|---|---|
| ● Severe Impact (Ground Level & Upper Floors) | Study Area Intersection |
| ● Severe Impact (Upper Floors) & Moderate Impact (Ground Level) | ⬠ Noise Measurement Site |
| ● Severe Impact (Upper Floors) & No Impact (Ground Level) | ● Station |
| ● Moderate Impact (Ground Level & Upper Floors) | ----- BRT Alignment |
| ● Moderate Impact (Upper Floors) | |
| ● No Impact | |

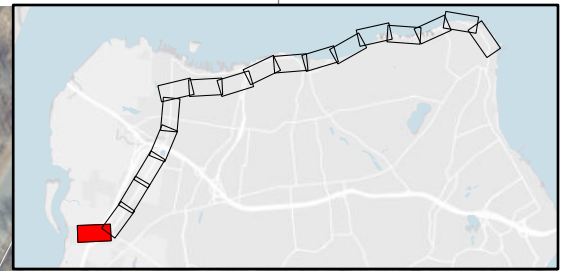
Staten Island North Shore BRT | Staten Island, NY

Noise Assessment Map



July 7, 2023



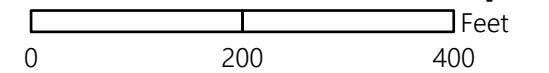


I:\nbgis\proj\NewYorkCity\28807.00 North Shore ROW EIS\Data\Noise\Appendix C Noise_2.aprx

- | | |
|--|--|
| ● Severe Impact (Ground Level & Upper Floors) | Study Area Intersection |
| ● Severe Impact (Upper Floors) & Moderate Impact (Ground Level) | ⬠ Noise Measurement Site |
| ● Severe Impact (Upper Floors) & No Impact (Ground Level) | Station |
| ● Moderate Impact (Ground Level & Upper Floors) | BRT Alignment |
| ● Moderate Impact (Upper Floors) | |
| No Impact | |

Staten Island North Shore BRT | Staten Island, NY

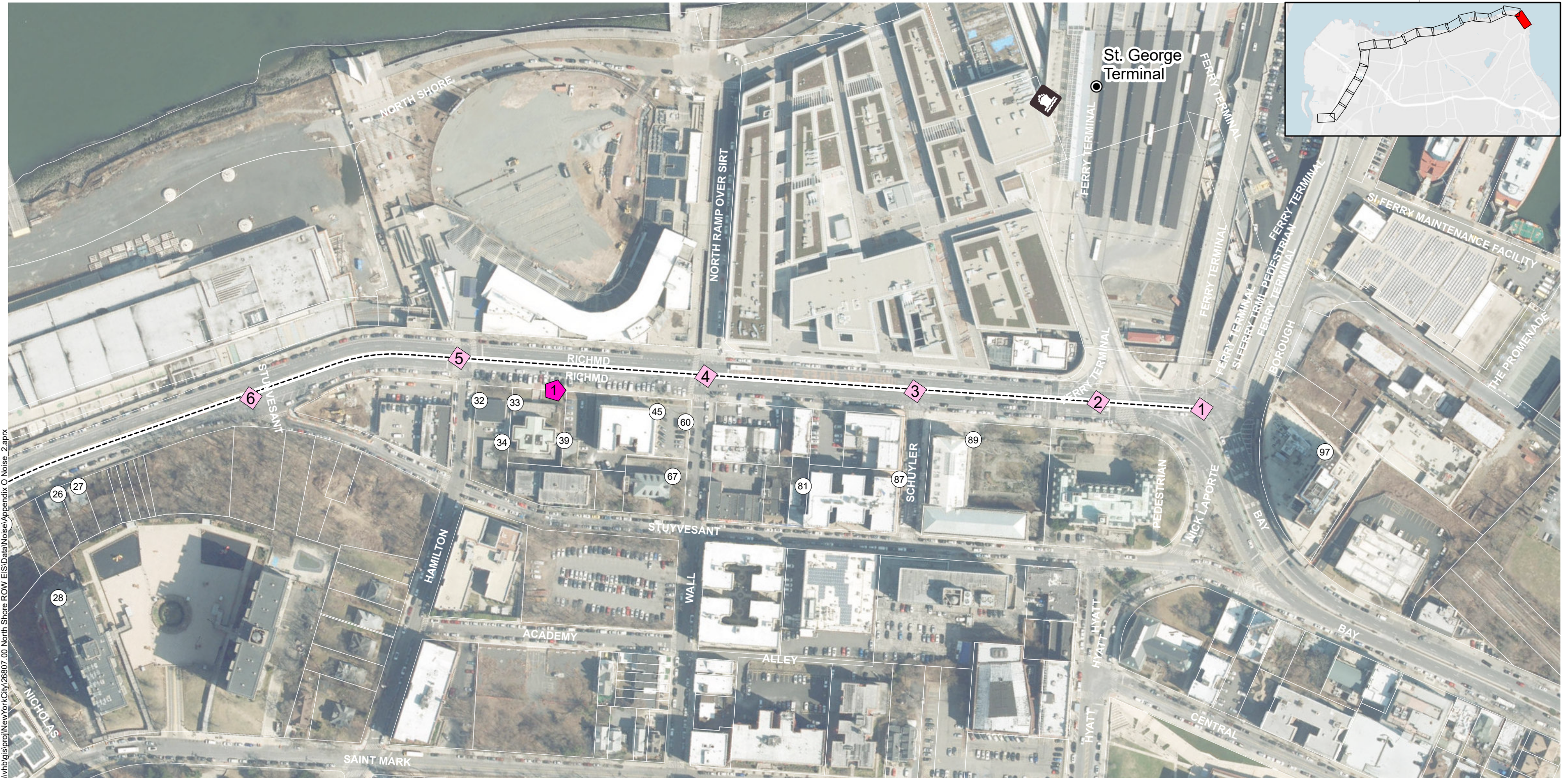
Noise Assessment Map



July 7, 2023



Appendix O-3: Operational Noise Figures with Mitigation

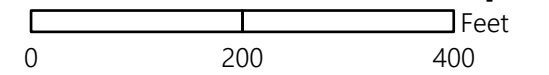


I:\nbg\is\proj\NewYorkCity\26807.00 North Shore ROW EIS\Data\Noise\Appendix C Noise_2.aprx

- | | |
|---|--|
| ● Severe Impact (Ground Level & Upper Floors) | — Proposed Noise Barrier |
| ● Severe Impact (Upper Floors) & Moderate Impact (Ground Level) | Study Area Intersection |
| ● Severe Impact (Upper Floors) & No Impact (Ground Level) | ◆ Noise Measurement Site |
| ● Moderate Impact (Ground Level & Upper Floors) | Station |
| Moderate Impact (Upper Floors) | BRT Alignment |
| No Impact | |

Staten Island North Shore BRT | Staten Island, NY

Noise Assessment Map



July 7, 2023

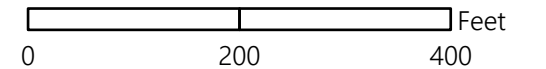


I:\nbg\is\proj\NewYorkCity\26807_00_North Shore ROW\GISData\Noise\Appendix O Noise_2.aprx

- | | |
|--|--|
| ● Severe Impact (Ground Level & Upper Floors) | — Proposed Noise Barrier |
| ● Severe Impact (Upper Floors) & Moderate Impact (Ground Level) | Study Area Intersection |
| ● Severe Impact (Upper Floors) & No Impact (Ground Level) | ⬠ Noise Measurement Site |
| ● Moderate Impact (Ground Level & Upper Floors) | Station |
| ● Moderate Impact (Upper Floors) | BRT Alignment |
| No Impact | |

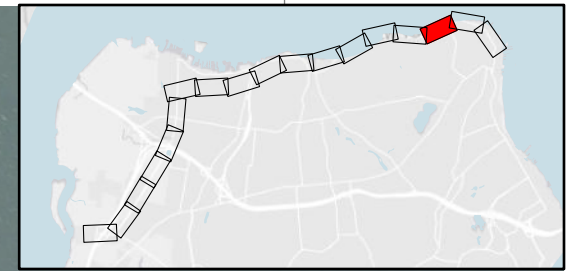
Staten Island North Shore BRT | Staten Island, NY

Noise Assessment Map



July 7, 2023





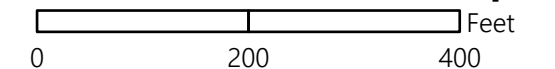
I:\nbg\is\proj\NewYorkCity\286807_00_North Shore ROW\GISData\Noise\Appendix C Noise 2.aprx

- | | |
|--|--|
| ● Severe Impact (Ground Level & Upper Floors) | — Proposed Noise Barrier |
| ● Severe Impact (Upper Floors) & Moderate Impact (Ground Level) | Study Area Intersection |
| ● Severe Impact (Upper Floors) & No Impact (Ground Level) | ◆ Noise Measurement Site |
| ● Moderate Impact (Ground Level & Upper Floors) | Station |
| ● Moderate Impact (Upper Floors) | BRT Alignment |
| No Impact | |

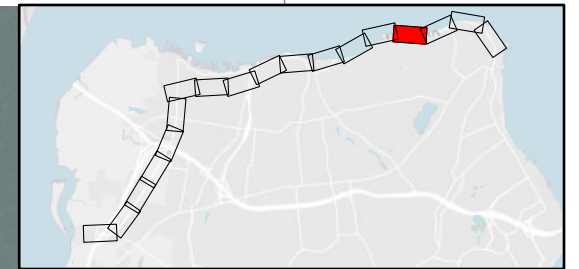
Staten Island North Shore BRT | Staten Island, NY



Noise Assessment Map



July 7, 2023



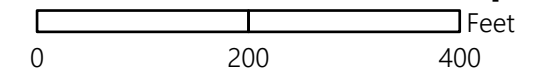
I:\bigs\proj\NewYorkCity\26807.00 North Shore ROW EIS\Map\Noise\Appendix O Noise_2.aprx

- | | |
|--|--|
| ● Severe Impact (Ground Level & Upper Floors) | — Proposed Noise Barrier |
| ● Severe Impact (Upper Floors) & Moderate Impact (Ground Level) | Study Area Intersection |
| ● Severe Impact (Upper Floors) & No Impact (Ground Level) | ⬠ Noise Measurement Site |
| ● Moderate Impact (Ground Level & Upper Floors) | Station |
| ● Moderate Impact (Upper Floors) | BRT Alignment |
| No Impact | |

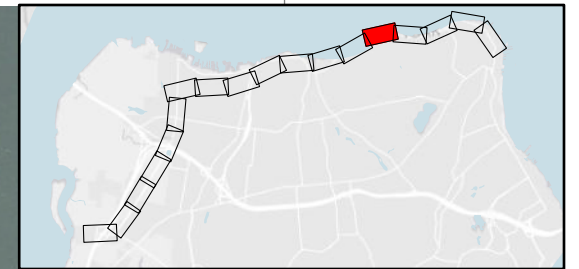
Staten Island North Shore BRT | Staten Island, NY



Noise Assessment Map



July 7, 2023

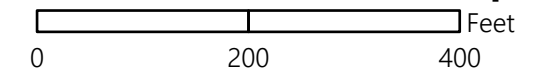


I:\nbgis\proj\NewYorkCity\26807_00_North Shore ROW EIS\Data\Noise\Appendix C Noise_2.aprx

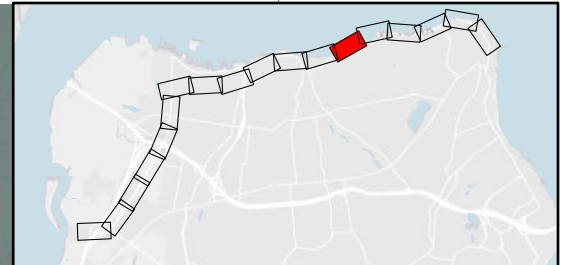
- | | |
|---|---|
| ● Severe Impact (Ground Level & Upper Floors) | — Proposed Noise Barrier |
| ● Severe Impact (Upper Floors) & Moderate Impact (Ground Level) | Study Area Intersection |
| ● Severe Impact (Upper Floors) & No Impact (Ground Level) | ⬠ Noise Measurement Site |
| ● Moderate Impact (Ground Level & Upper Floors) | ● Station |
| ● Moderate Impact (Upper Floors) | BRT Alignment |
| ● No Impact | |

Staten Island North Shore BRT | Staten Island, NY

Noise Assessment Map



July 7, 2023

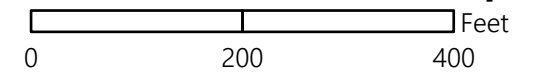


I:\nbgis\proj\NewYorkCity\26807.00 North Shore ROW\GISData\Noise\Appendix C Noise_2.aprx

- Severe Impact (Ground Level & Upper Floors)
- Severe Impact (Upper Floors) & Moderate Impact (Ground Level)
- Severe Impact (Upper Floors) & No Impact (Ground Level)
- Moderate Impact (Ground Level & Upper Floors)
- Moderate Impact (Upper Floors)
- No Impact
- Proposed Noise Barrier
- Study Area Intersection
- ◆ Noise Measurement Site
- Station
- BRT Alignment

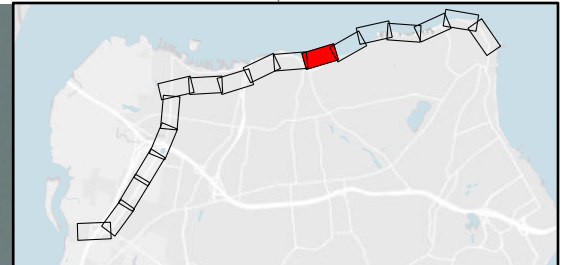
Staten Island North Shore BRT | Staten Island, NY

Noise Assessment Map



July 7, 2023



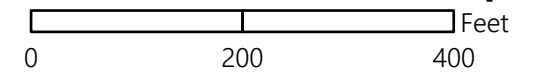


I:\v\b\gis\proj\NewYorkCity\268607_00_North Shore ROW EIS\Data\Noise\Appendix C Noise_2.aprx

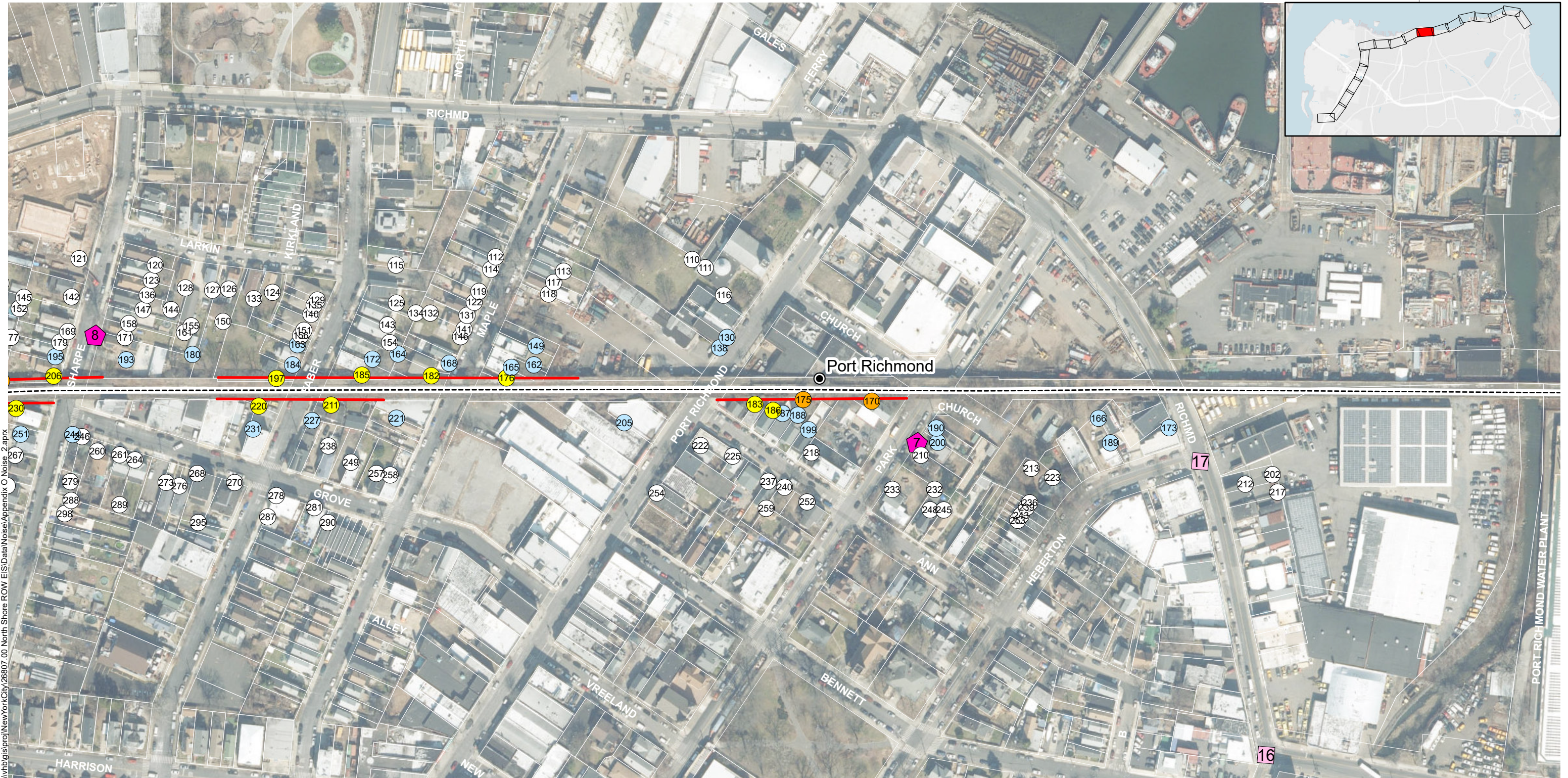
- | | |
|--|--|
| ● Severe Impact (Ground Level & Upper Floors) | — Proposed Noise Barrier |
| ● Severe Impact (Upper Floors) & Moderate Impact (Ground Level) | Study Area Intersection |
| ● Severe Impact (Upper Floors) & No Impact (Ground Level) | ◆ Noise Measurement Site |
| ● Moderate Impact (Ground Level & Upper Floors) | Station |
| ● Moderate Impact (Upper Floors) | BRT Alignment |
| No Impact | |

Staten Island North Shore BRT | Staten Island, NY

Noise Assessment Map



July 7, 2023

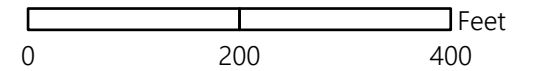


I:\vbigis\proj\NewYorkCity\26807_00_North_Shore_ROW\GISData\Noise\Appendix_O_Noise_2.aprx

- | | |
|--|--|
| ● Severe Impact (Ground Level & Upper Floors) | — Proposed Noise Barrier |
| ● Severe Impact (Upper Floors) & Moderate Impact (Ground Level) | Study Area Intersection |
| ● Severe Impact (Upper Floors) & No Impact (Ground Level) | ⬠ Noise Measurement Site |
| ● Moderate Impact (Ground Level & Upper Floors) | Station |
| ● Moderate Impact (Upper Floors) | BRT Alignment |
| No Impact | |

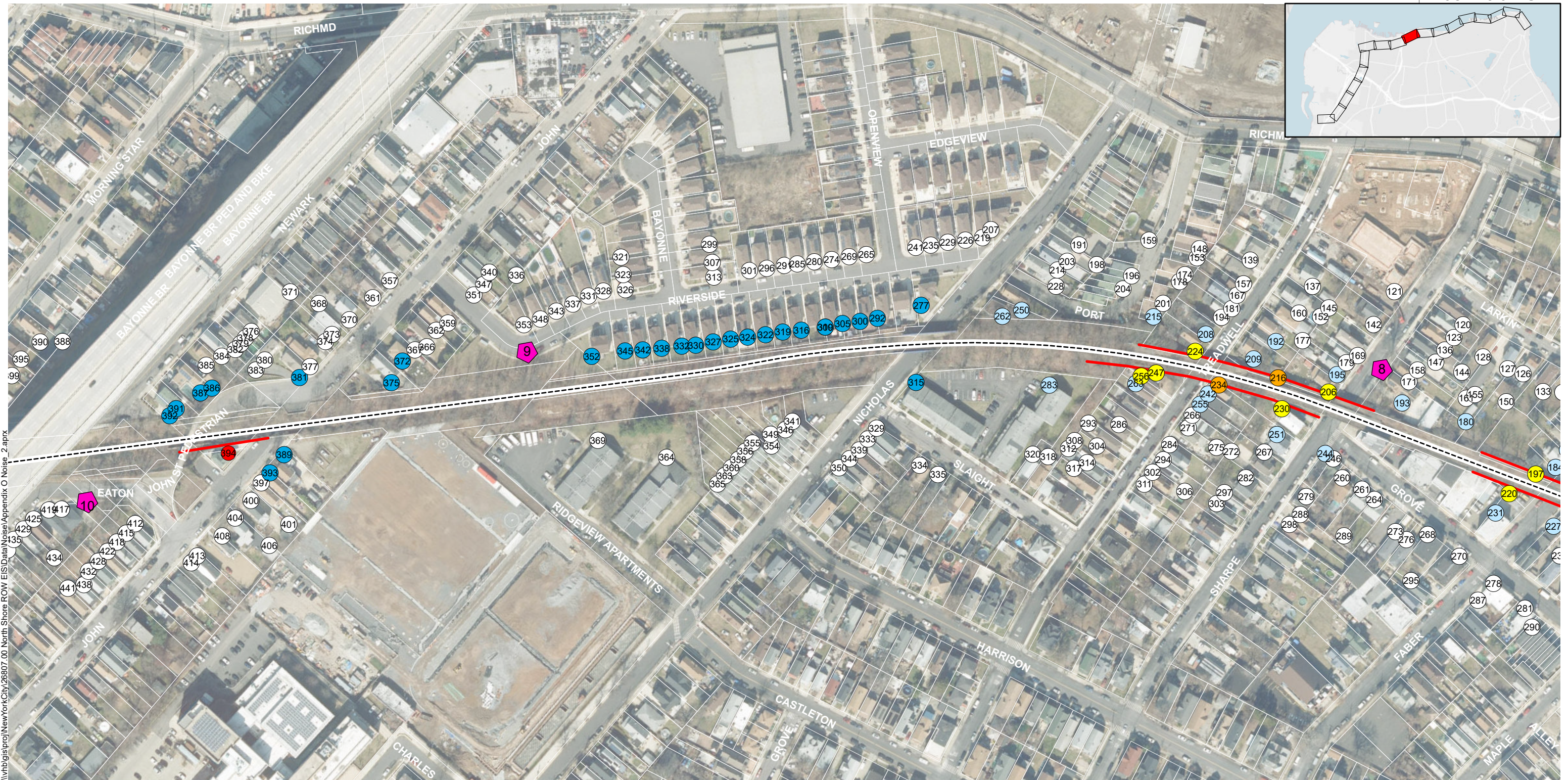
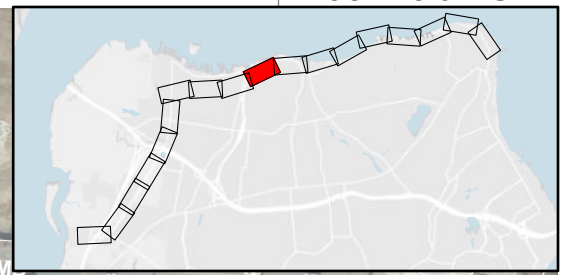
Staten Island North Shore BRT | Staten Island, NY

Noise Assessment Map



July 7, 2023



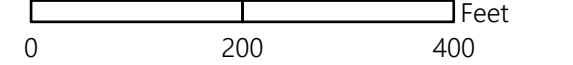


I:\nbgis\proj\NewYork\City\26607.00 North Shore ROW EIS\Data\Noise\Appendix C Noise_2.aprx

- Severe Impact (Ground Level & Upper Floors)
- Severe Impact (Upper Floors) & Moderate Impact (Ground Level)
- Severe Impact (Upper Floors) & No Impact (Ground Level)
- Moderate Impact (Ground Level & Upper Floors)
- Moderate Impact (Upper Floors)
- No Impact
- Proposed Noise Barrier
- Study Area Intersection
- ⬠ Noise Measurement Site
- Station
- - - BRT Alignment

Staten Island North Shore BRT | Staten Island, NY

Noise Assessment Map



July 7, 2023



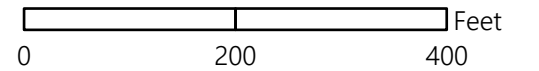


I:\nbgis\proj\NewYorkCity\26807_00_North Shore ROW\GISData\Noise\Appendix C Noise_2.aprx

- | | |
|---|---|
| ● Severe Impact (Ground Level & Upper Floors) | — Proposed Noise Barrier |
| ● Severe Impact (Upper Floors) & Moderate Impact (Ground Level) | ▭ Study Area Intersection |
| ● Severe Impact (Upper Floors) & No Impact (Ground Level) | ⬠ Noise Measurement Site |
| ● Moderate Impact (Ground Level & Upper Floors) | ● Station |
| ● Moderate Impact (Upper Floors) | - - - - BRT Alignment |
| ● No Impact | |

Staten Island North Shore BRT | Staten Island, NY

Noise Assessment Map



July 7, 2023



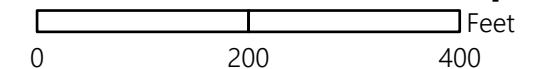


I:\v\b\gis\proj\NewYorkCity\286807.00 North Shore ROW\GISData\Noise\Appendix C Noise_2.aprx

- Severe Impact (Ground Level & Upper Floors)
- Severe Impact (Upper Floors) & Moderate Impact (Ground Level)
- Severe Impact (Upper Floors) & No Impact (Ground Level)
- Moderate Impact (Ground Level & Upper Floors)
- Moderate Impact (Upper Floors)
- No Impact
- Proposed Noise Barrier
- Study Area Intersection
- ⬠ Noise Measurement Site
- Station
- - - - BRT Alignment

Staten Island North Shore BRT | Staten Island, NY

Noise Assessment Map



July 7, 2023

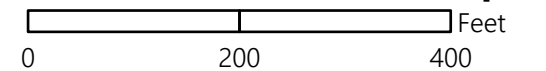


\\nbgis\proj\NewYorkCity\26807.00 North Shore ROW EIS\Data\Noise\Appendix O Noise_2.aprx

- Severe Impact (Ground Level & Upper Floors)
- Severe Impact (Upper Floors) & Moderate Impact (Ground Level)
- Severe Impact (Upper Floors) & No Impact (Ground Level)
- Moderate Impact (Ground Level & Upper Floors)
- Moderate Impact (Upper Floors)
- No Impact
- Proposed Noise Barrier
- Study Area Intersection
- ◆ Noise Measurement Site
- Station
- BRT Alignment

Staten Island North Shore BRT | Staten Island, NY

Noise Assessment Map



July 7, 2023



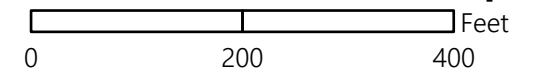


I:\nbgis\proj\NewYorkCity\26807.00_North Shore ROW EIS\Data\Noise\Appendix C Noise_2.aprx

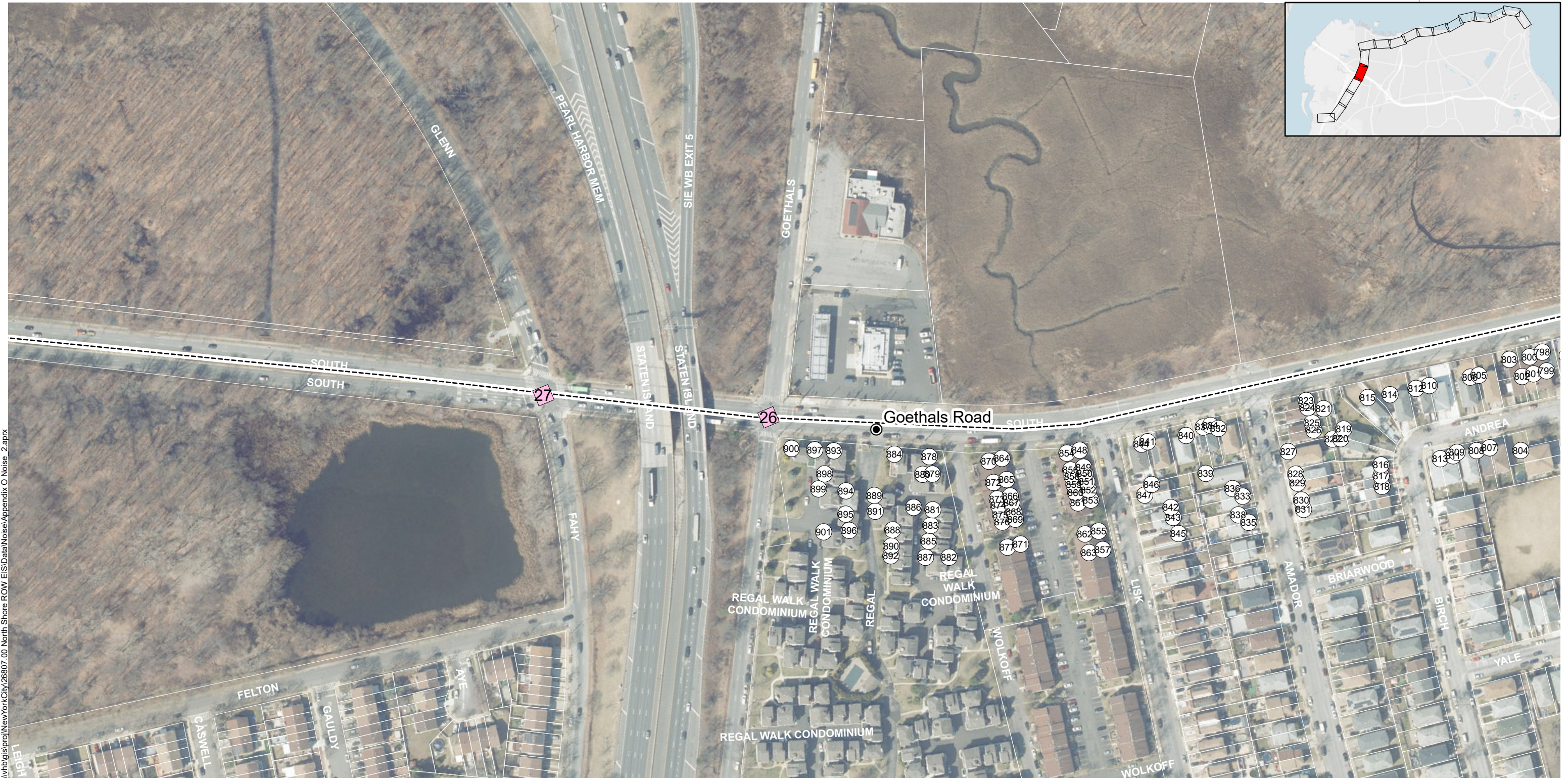
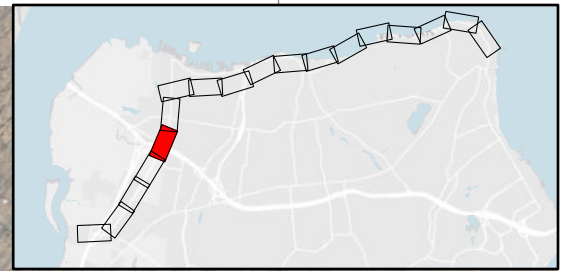
- | | |
|--|--|
| ● Severe Impact (Ground Level & Upper Floors) | — Proposed Noise Barrier |
| ● Severe Impact (Upper Floors) & Moderate Impact (Ground Level) | Study Area Intersection |
| ● Severe Impact (Upper Floors) & No Impact (Ground Level) | ◆ Noise Measurement Site |
| ● Moderate Impact (Ground Level & Upper Floors) | Station |
| ● Moderate Impact (Upper Floors) | BRT Alignment |
| No Impact | |

Staten Island North Shore BRT | Staten Island, NY

Noise Assessment Map



July 7, 2023



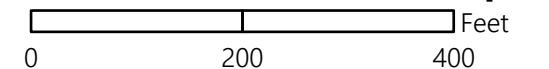
I:\nb\gis\proj\NewYorkCity\26607_00 North Shore ROW EIS\Data\Noise\Appendix C Noise 2.aprx

- | | |
|---|--|
| ● Severe Impact (Ground Level & Upper Floors) | — Proposed Noise Barrier |
| ● Severe Impact (Upper Floors) & Moderate Impact (Ground Level) | Study Area Intersection |
| ● Severe Impact (Upper Floors) & No Impact (Ground Level) | ◆ Noise Measurement Site |
| ● Moderate Impact (Ground Level & Upper Floors) | Station |
| Moderate Impact (Upper Floors) | BRT Alignment |
| No Impact | |

Staten Island North Shore BRT | Staten Island, NY



Noise Assessment Map



July 7, 2023



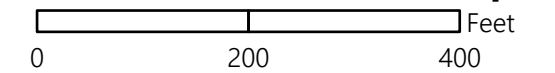
\\nbgis\proj\NewYorkCity\26807.00 North Shore ROW\GISData\Noise\Appendix O Noise_2.aprx

- Severe Impact (Ground Level & Upper Floors)
 - Severe Impact (Upper Floors) & Moderate Impact (Ground Level)
 - Severe Impact (Upper Floors) & No Impact (Ground Level)
 - Moderate Impact (Ground Level & Upper Floors)
 - Moderate Impact (Upper Floors)
 - No Impact
- Proposed Noise Barrier
 - Study Area Intersection
 - ◆ Noise Measurement Site
 - Station
 - BRT Alignment

Staten Island North Shore BRT | Staten Island, NY



Noise Assessment Map



July 7, 2023



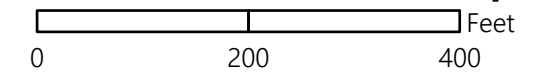
I:\nbg\proj\NewYorkCity\26807.00 North Shore ROW EIS\Data\Noise\Appendix C Noise_2.aprx

- | | |
|---|--|
| ● Severe Impact (Ground Level & Upper Floors) | — Proposed Noise Barrier |
| ● Severe Impact (Upper Floors) & Moderate Impact (Ground Level) | Study Area Intersection |
| ● Severe Impact (Upper Floors) & No Impact (Ground Level) | ⬠ Noise Measurement Site |
| ● Moderate Impact (Ground Level & Upper Floors) | Station |
| Moderate Impact (Upper Floors) | BRT Alignment |
| No Impact | |

Staten Island North Shore BRT | Staten Island, NY



Noise Assessment Map



July 7, 2023

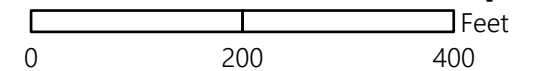


\\nbgis\proj\NewYorkCity\26807.00 North Shore ROW EIS\Data\Noise\Appendix C Noise_2.aprx

- | | |
|--|--|
| ● Severe Impact (Ground Level & Upper Floors) | — Proposed Noise Barrier |
| ● Severe Impact (Upper Floors) & Moderate Impact (Ground Level) | Study Area Intersection |
| ● Severe Impact (Upper Floors) & No Impact (Ground Level) | ⬠ Noise Measurement Site |
| ● Moderate Impact (Ground Level & Upper Floors) | Station |
| ● Moderate Impact (Upper Floors) | BRT Alignment |
| No Impact | |

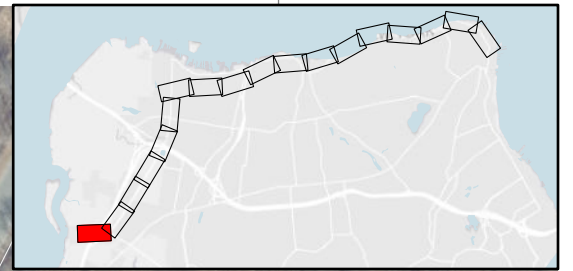
Staten Island North Shore BRT | Staten Island, NY

Noise Assessment Map



July 7, 2023



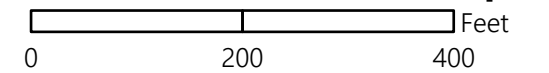


I:\v\b\gis\proj\NewYorkCity\28807.00 North Shore ROW EIS\Data\Noise\Appendix C Noise_2.aprx

- | | |
|--|--|
| ● Severe Impact (Ground Level & Upper Floors) | — Proposed Noise Barrier |
| ● Severe Impact (Upper Floors) & Moderate Impact (Ground Level) | Study Area Intersection |
| ● Severe Impact (Upper Floors) & No Impact (Ground Level) | ⬠ Noise Measurement Site |
| ● Moderate Impact (Ground Level & Upper Floors) | Station |
| ● Moderate Impact (Upper Floors) | BRT Alignment |
| No Impact | |

Staten Island North Shore BRT | Staten Island, NY

Noise Assessment Map



July 7, 2023

