

Queens Sunnyside Yard Complex

The MTACC'S East Side Access project, which will bring Long Island Rail Road (LIRR) trains into a new station under Grand Central Terminal, is currently under construction. The new connection will increase the LIRR's capacity into Manhattan and dramatically shorten travel time for Long Island and eastern Queens commuters traveling to the east side of Manhattan.

Construction is underway within Queens Sunnyside Yard Complex as various contracts continue to be advanced. Various new and modified elements are being built and include the installation of new tracks, signals and communications, construction of new retaining walls, bridges, catenary towers, substations, tunnels, along with the associated improvements to related structures and utilities. These improvements will increase railroad capacity within Sunnyside Yard, and make room for the new and expanded LIRR service.

The construction progress status of this contract is provided below.

Completed Construction Activities:

- Completed demolition of existing retaining wall and installed support of excavation for Westbound bypass abutment pier
- Completed excavation for associated tunnel structures within lot formerly occupied by 43rd St
- Completed removal of bridge shield and installation of guard rail for Harold Access Bridge
- Completed excavation in preparation for pile installation at 43rd St
- Completed removal of cables along the railroad tracks between 43rd St and 48th St
- Complete installation of Honeywell St Bridge underpinning
- Complete installation of G02 substation at corner of Skillman Avenue and Honeywell Street

Construction Activities Underway (July - September 2011):

- Commence Honeywell Bridge mini pile installation
- Commence Tunnel Boring Machine tunneling within Sunnyside Yard

- Recommence sheeting installation for retaining wall between 43rd St and 48th St
- Continue drilling and pile installation to support the new bridge structure at 43rd st
- Continue 54 in sewer main replacement and relocation on 43rd Street
- Continue construction of Yard Lead Approach Structure at 43rd St west of 37th Avenue
- 39th Street Bridge underpinning is underway
- Continue to erect new signal towers and install new cables along track at various locations

Upcoming Construction Activities (October - December 2011):

- Commence demolition of existing abutment, drilling and pile installation to support new bridge structure on 48th St
- Commence replacement of existing steel tower along railroad right of way
- Construct new power substation within site on 43rd St at 37th Avenue
- Commence installation of underpinning at GM Bridge

The East Side Access team, along with LIRR, Amtrak and several utility companies, are dedicated to completing the required construction as quickly as possible with the least amount of inconvenience to residents and businesses in the neighborhood.

East Side Access is committed to maintaining a work site that is safe and clean. We appreciate the patience and understanding of the residents of this neighborhood as we progress the contract. While dust, noise and heavy equipment are common elements of construction, we have taken several measures to minimize and mitigate these impacts as much as possible.

Horn Blowing:

LIRR is aware of the nuisance that horn blowing causes to the residents in the immediate and surrounding areas. However, Federal Railroad Administration (FRA) regulations require audible warnings from trains when workers are on or near the tracks to insure the safety for workers as well as commuters.

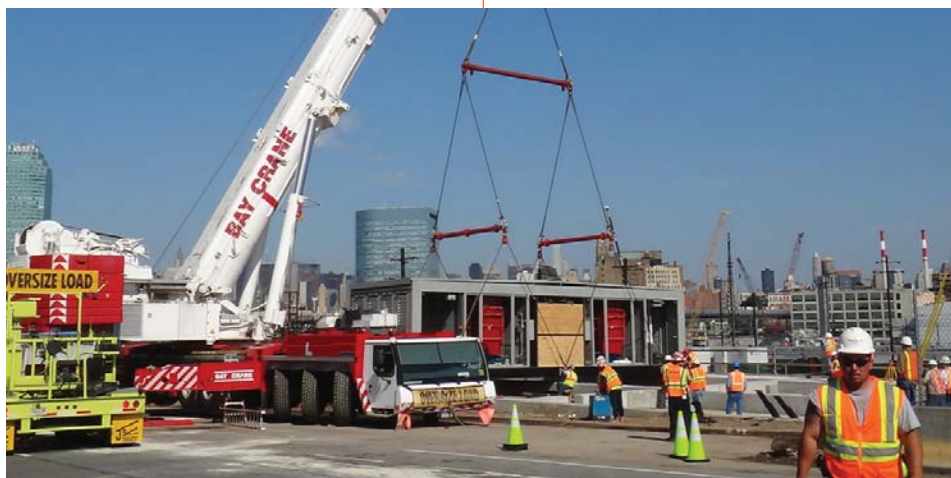
Work Schedule:

The typical construction schedule will be:
Days: Monday – Friday
(Saturday and Sunday on limited occasion)
Time: 24 hours a day

Temporary Lane Closures:

At times during this project it will be necessary for the contractor to occupy traffic lanes or sidewalks in order to conduct construction activities. Currently, portions of the parking lane on 39th St and Skillman Avenue remain closed as well as portions of the parking lanes at Skillman Avenue and Honeywell St.

At 43rd St the West sidewalk will be closed for an additional 4 months. Portions of the east sidewalk will be closed after the west side is completed. Vehicular traffic on 43rd street and 37th Avenue will be impacted during sewer main relocation for approximately 3-6 months, Monday through Friday, 7am – 5pm; and Saturday, 8am – 4pm.



New G02 Substation at corner of Skillman Avenue and Honeywell Street